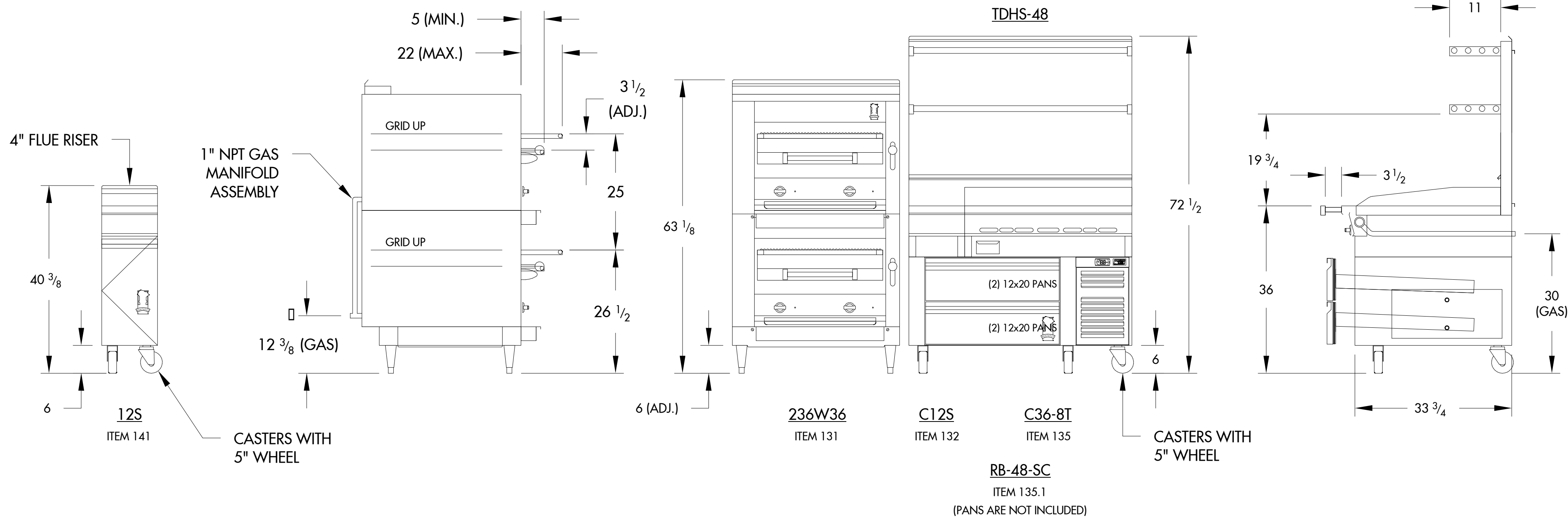
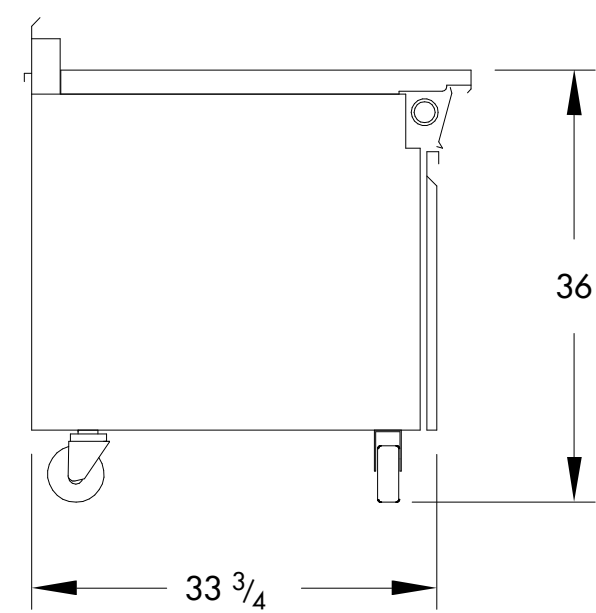
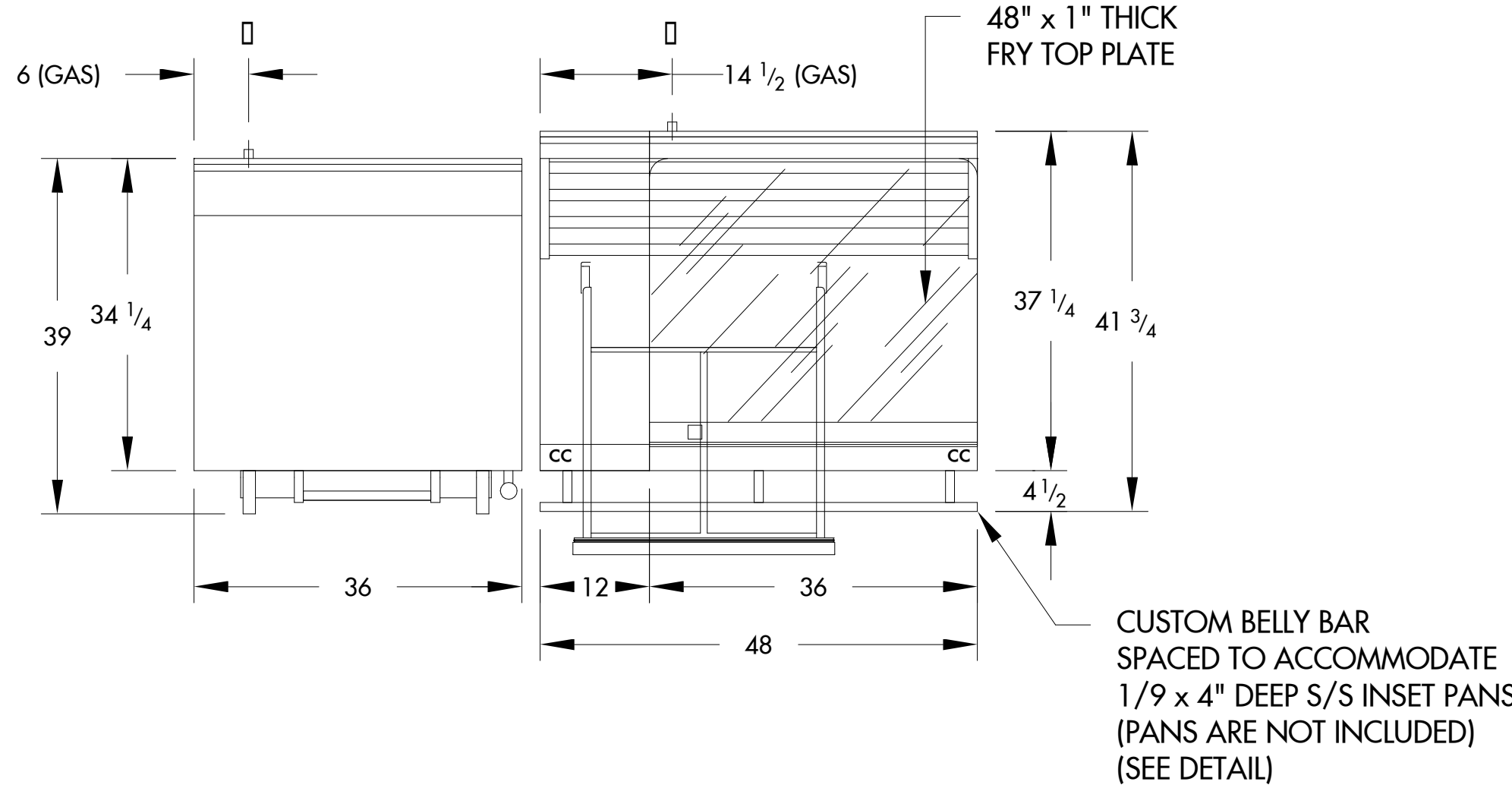
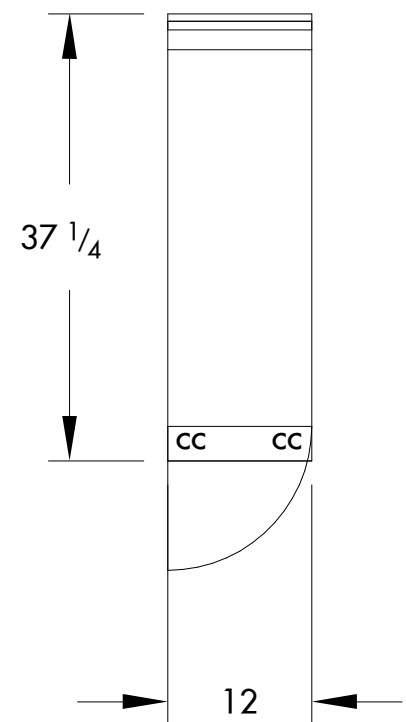
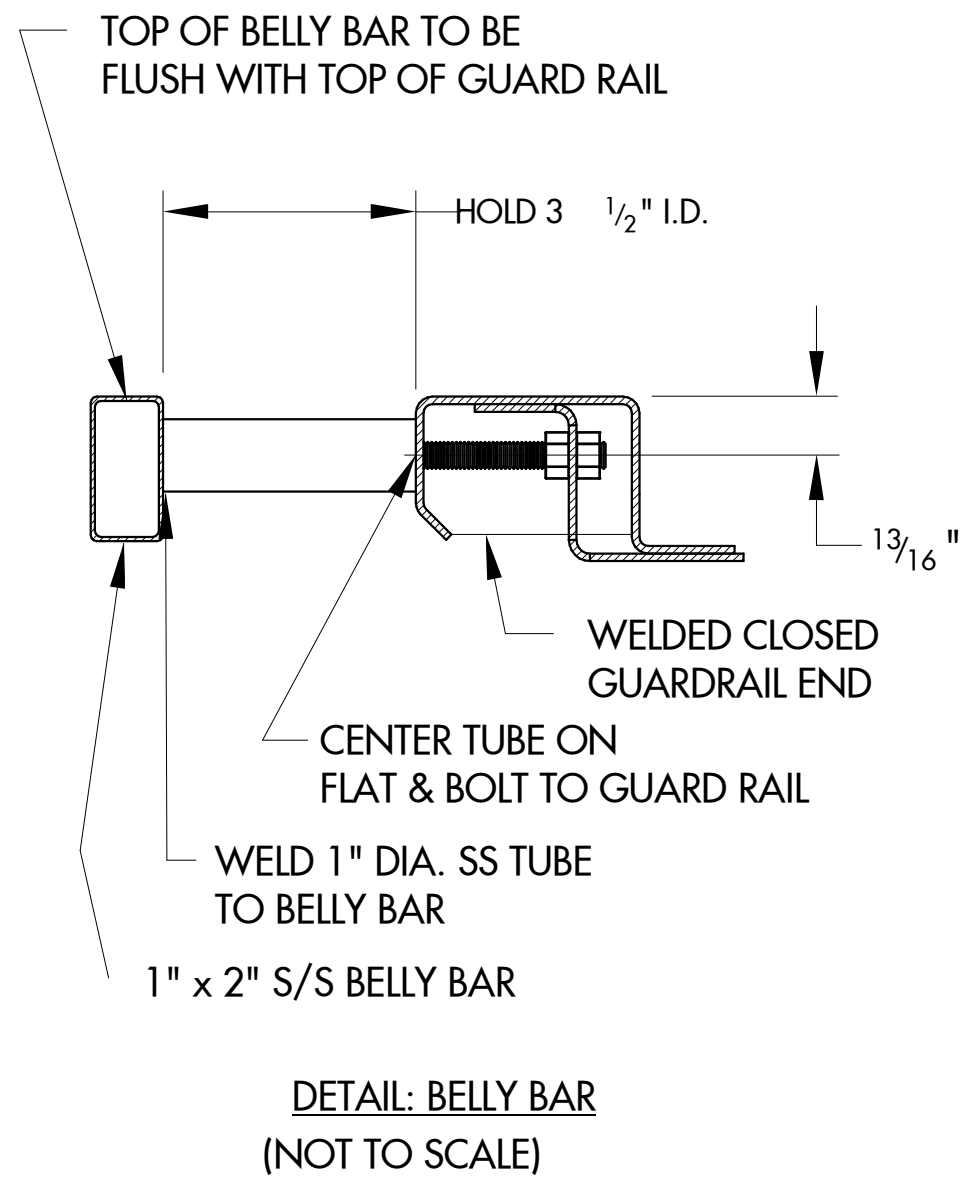


REV	BY	DATE	DESCRIPTION
1	JA	9-9-20	CUSTOMER CHANGES
2	CWB	12-18-20	NEW DESIGN

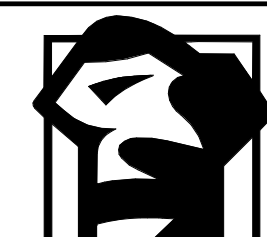


UTILITY DATA					
MODEL	ITEM	QTY.	GAS SIZE	B.T.U./Hr.	ELECTRIC
12S	141	1			
236W36	131	1	1" NPT	168,000	
C12S	132	1			
C36-8T	135	1	1" NPT	80,000	
RB-48-SC	135.1	1			1/3 HP, 7.74 AMPS, 115/60/1, 6' CORD w/NEMA 5-15P
EQUIPMENT TOTAL: GAS; NATURAL @ 6" W.C., 248,000 BTU/HR. ELECTRIC; 115/60/1, 7.74 AMPS					

PRODUCTION SUBMITTAL

CUSTOMER APPROVAL	
<input type="checkbox"/> APPROVED AS SUBMITTED <input type="checkbox"/> REVISE AND RESUBMIT	
SIGNATURE: _____	DATE: _____
PRINT NAME: _____	
SALES APPROVAL	
SIGNATURE: _____	DATE: _____

NOTE:  
GUARD RAIL IS NOT DESIGNED TO SUPPORT EXCESSIVE WEIGHT ON THE BELLY BAR, NOR IS IT SUITABLE FOR USE AS A LIFTING HANDLE.

	PROPRIETARY RIGHTS: THIS DOCUMENT CONTAINS INFORMATION DEEMED PROPRIETARY TO THE MONTAGUE CO. AND IS TO BE USED ONLY FOR THE PURPOSE FOR WHICH THEY ARE SUBMITTED AND SHALL NOT BE COPIED IN WHOLE OR IN PART WITHOUT EXPRESS WRITTEN PERMISSION OBTAINED FROM THE MONTAGUE COMPANY.		THE MONTAGUE COMPANY 1830 STEARMAN AVENUE HAYWARD, CA 94545	
	DIMENSIONS ARE IN INCHES		SALES DWG. - BATTERY	
	TOLERANCES:  DECIMALS ± 0.020 FRACTIONS: ± 1/32 DEGREES: ±		WYNDEMERE COUNTRY CLUB	
	UNLESS OTHERWISE SPECIFIED		SCALE 3/8"=1'-0"	DRAWN JAA
		DATE 8-19-20	APPROVED BL	
		SHEET 1 OF 3	DRAWING No. 74289-9	REV 2

COOKING BATTERY DETAILS

SCALE AS NOTED

**COPYRIGHT:**  
UNAUTHORIZED USE OF THE FOODSERVICE DESIGN DETAILS, AUTOCAD BLOCKS, REVIT FAMILIES, AND SPECIFICATIONS CONTAINED IN THESE DOCUMENTS IS STRICTLY PROHIBITED. NSD, INC. MAINTAINS OWNERSHIP OF SAME. THIS PROHIBITION EXTENDS FROM PRINTED MATERIAL TO ANY ELECTRONIC VERSIONS OF THE SAME. NO USE, OTHER THAN THAT FOR WHICH IT IS INTENDED, IS STRICTLY PROHIBITED WITHOUT WRITTEN PERMISSION FROM NEXT STEP DESIGN, INC. ALL RIGHTS RESERVED.

700 WYNDEMERE WAY  
NAPLES, FL 34105



**NEXT STEP DESIGN**  
913 West Street Annapolis, MD 21401  
Ph: (410) 263-1200  
nextstepdesign.com

ISSUE	DATE
100% Interim Schematic Design	07/10/20
100% Schematic Design	07/17/20
50% Design Development	08/17/20
95% Design Development	08/21/20
100% Design Development	08/25/20
100% Interim Design	09/04/20
50% Construction Document	10/30/20
Permit Set	12/11/20
Bid Set	12/18/20

DATE: 12/18/20 SCALE: 3/4" = 1'-0"

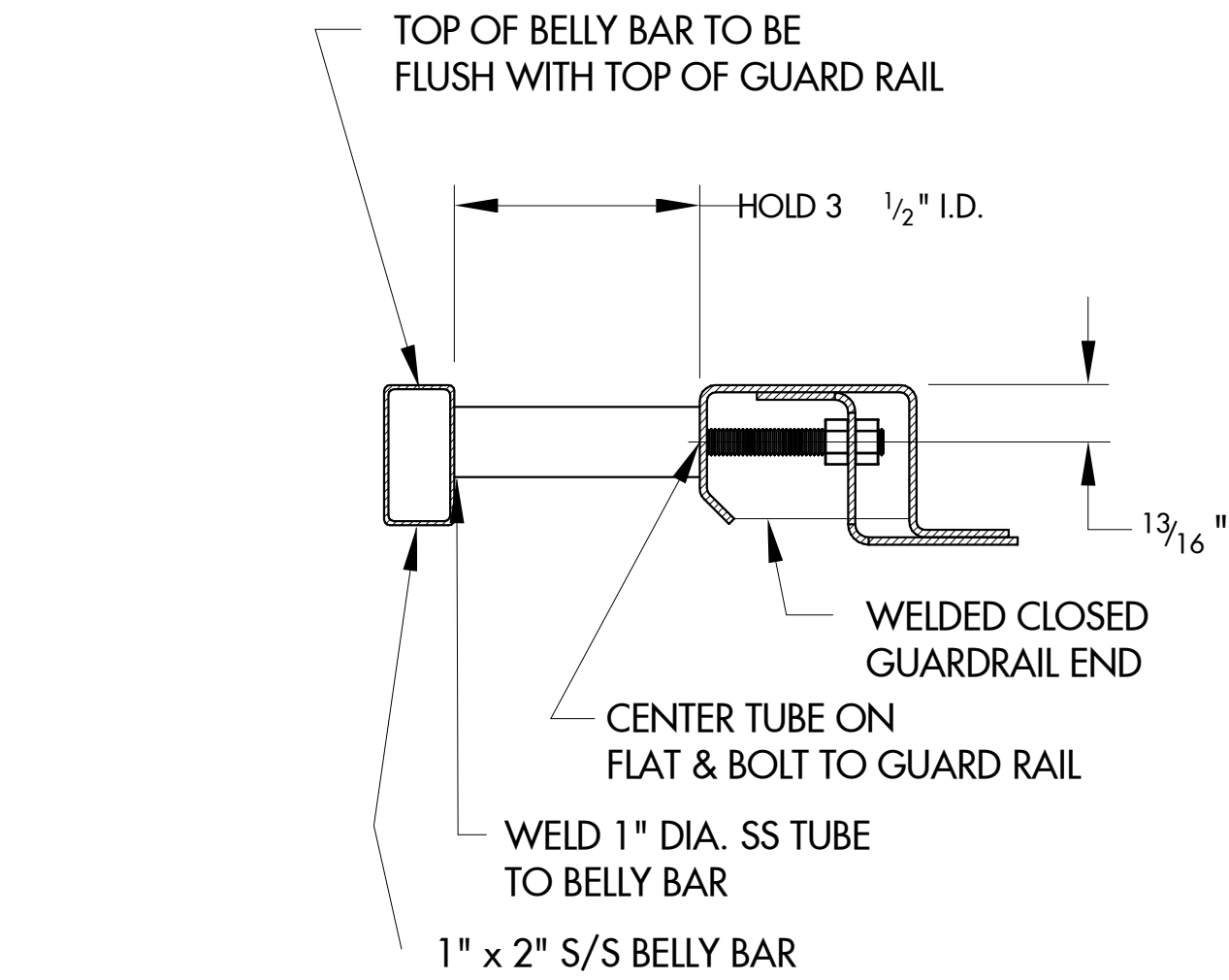
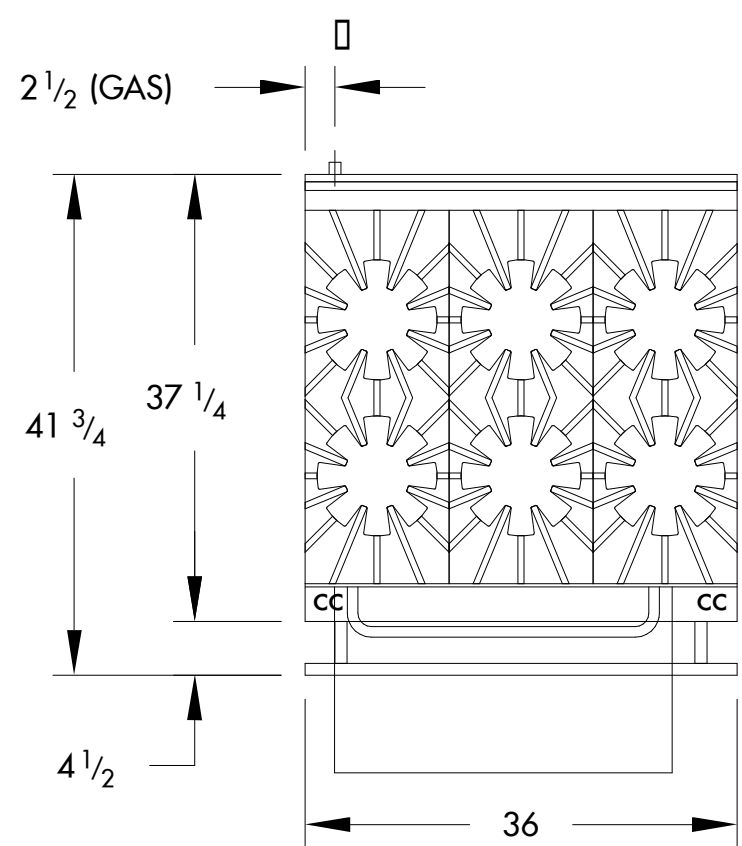
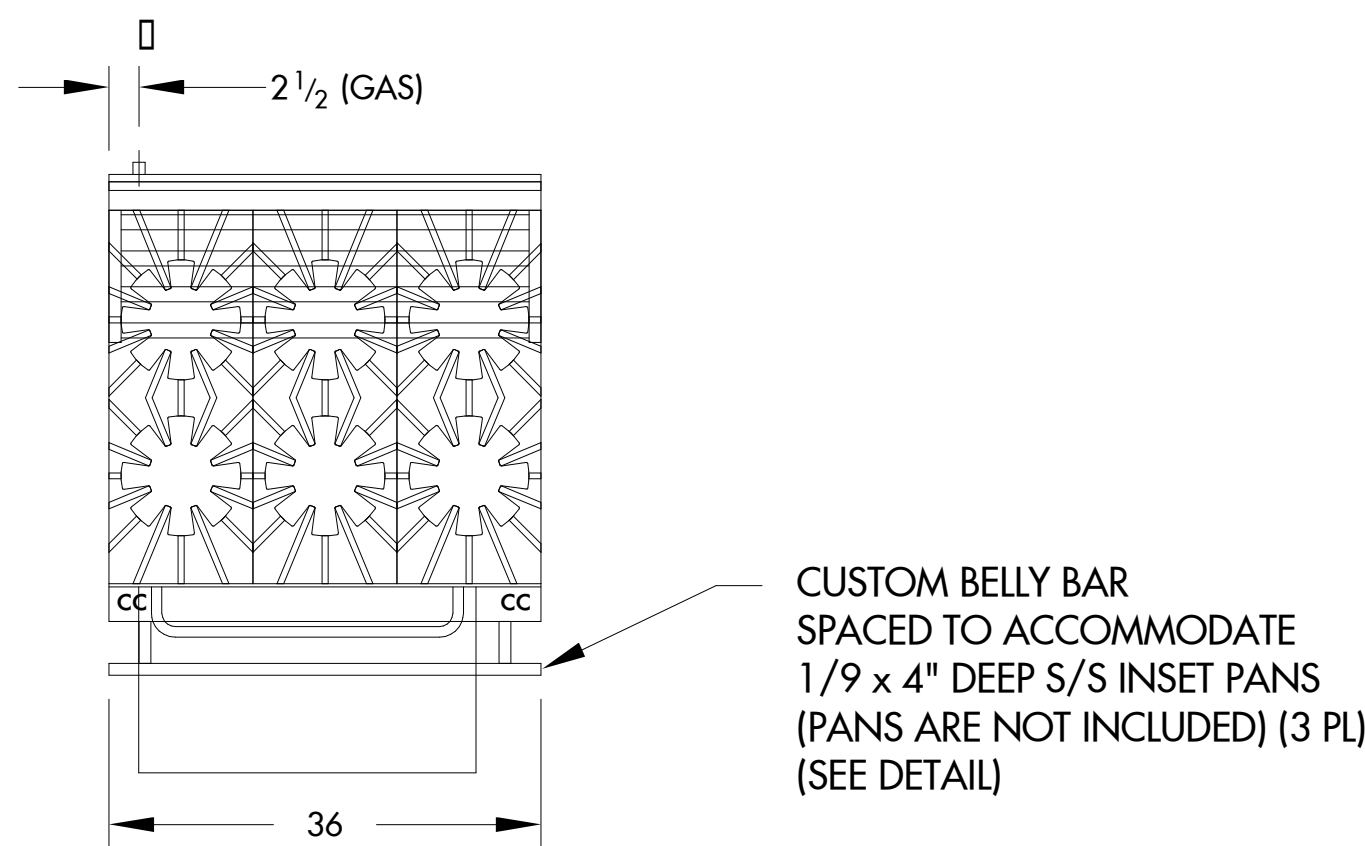
PROJECT #: - DRAWN: EGM

FOODSERVICE COOKING  
BATTERY DETAILS

SHEET #:

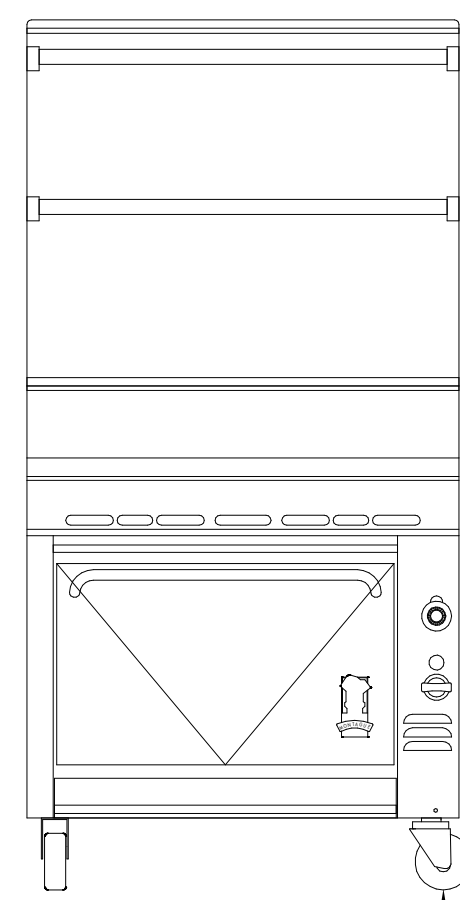
600-CB

REV	BY	DATE	DESCRIPTION
1	JA	9-9-20	CUSTOMER CHANGES
2	CWB	12-18-20	NEW DESIGN



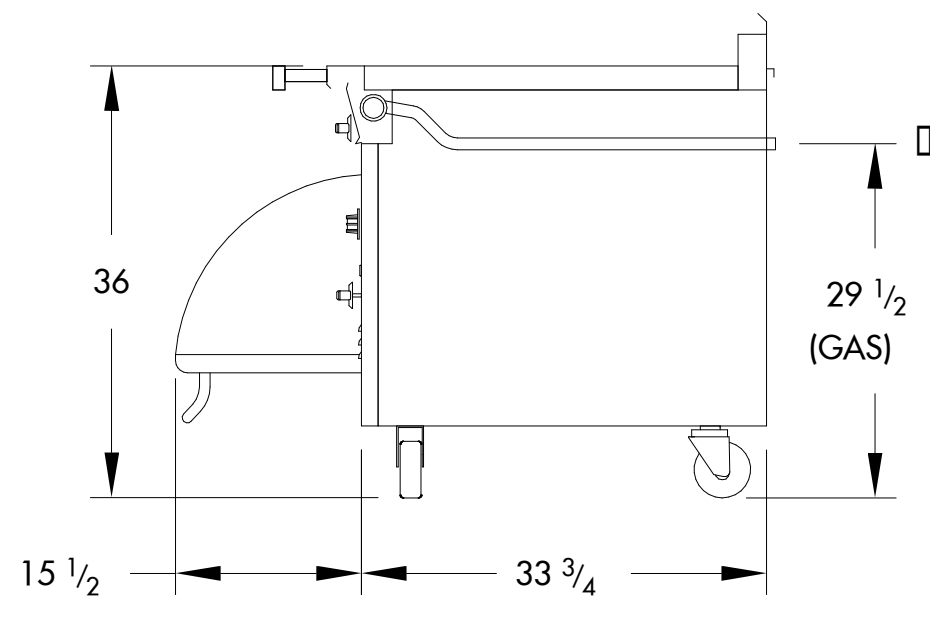
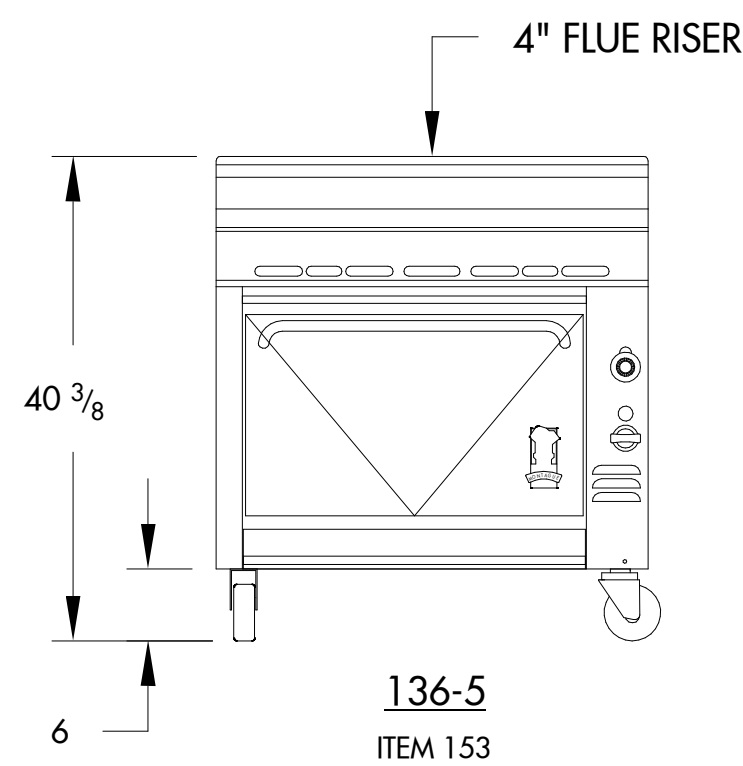
DETAIL: BELLY BAR  
(NOT TO SCALE)

TDHS-36



136-5  
ITEM 140

CASTERS WITH  
5" WHEEL (TYP)



PRODUCTION SUBMITTAL

CUSTOMER APPROVAL	
<input type="checkbox"/> APPROVED AS SUBMITTED <input type="checkbox"/> REVISE AND RESUBMIT	
SIGNATURE: _____	DATE: _____
PRINT NAME: _____	
SALES APPROVAL	
SIGNATURE: _____	DATE: _____

NOTE:  
GUARD RAIL IS NOT DESIGNED TO SUPPORT EXCESSIVE  
WEIGHT ON THE BELLY BAR, NOR  
IS IT SUITABLE FOR USE AS A LIFTING HANDLE.

UTILITY DATA				
MODEL	ITEM	QTY.	GAS SIZE	B.T.U./Hr.
136-5	140	1	1" NPT	220,000
136-5	153	1	1" NPT	220,000
EQUIPMENT TOTAL: GAS; NATURAL @ 6" W.C., 440,000 BTU/HR				

COOKING BATTERY DETAILS

SCALE AS NOTED

**COPYRIGHT**  
UNAUTHORIZED USE OF THE FOODSERVICE DESIGN DETAILS, AUTOCAD BLOCKS, REVIT FAMILIES, AND SPECIFICATIONS  
CONTAINED IN THESE DOCUMENTS IS STRICTLY PROHIBITED. NSD INC. MAINTAINS OWNERSHIP OF SAME. THIS PROHIBITION  
EXTENDS FROM PRINTED MATERIAL TO ANY ELECTRONIC VERSIONS OF THE SAME. NO USE, OTHER THAN THAT FOR WHICH IT  
IS INTENDED, IS STRICTLY PROHIBITED WITHOUT WRITTEN PERMISSION FROM NEXT STEP DESIGN, INC. ALL RIGHTS RESERVED.

700 WYNDEMERE WAY  
NAPLES, FL 34105



**NEXT STEP DESIGN**  
913 West Street Annapolis, MD 21401  
Ph: (410) 263-1200  
nextstepdesign.com

ISSUE	DATE
100% Interim Schematic Design	07/10/20
100% Schematic Design	07/17/20
50% Design Development	08/17/20
95% Design Development	08/21/20
100% Design Development	08/25/20
100% Interim Design Development	09/04/20
50% Construction Document	10/30/20
Permit Set	12/11/20
Bid Set	12/18/20

DATE: 12/18/20 SCALE: 3/4" = 1'-0"

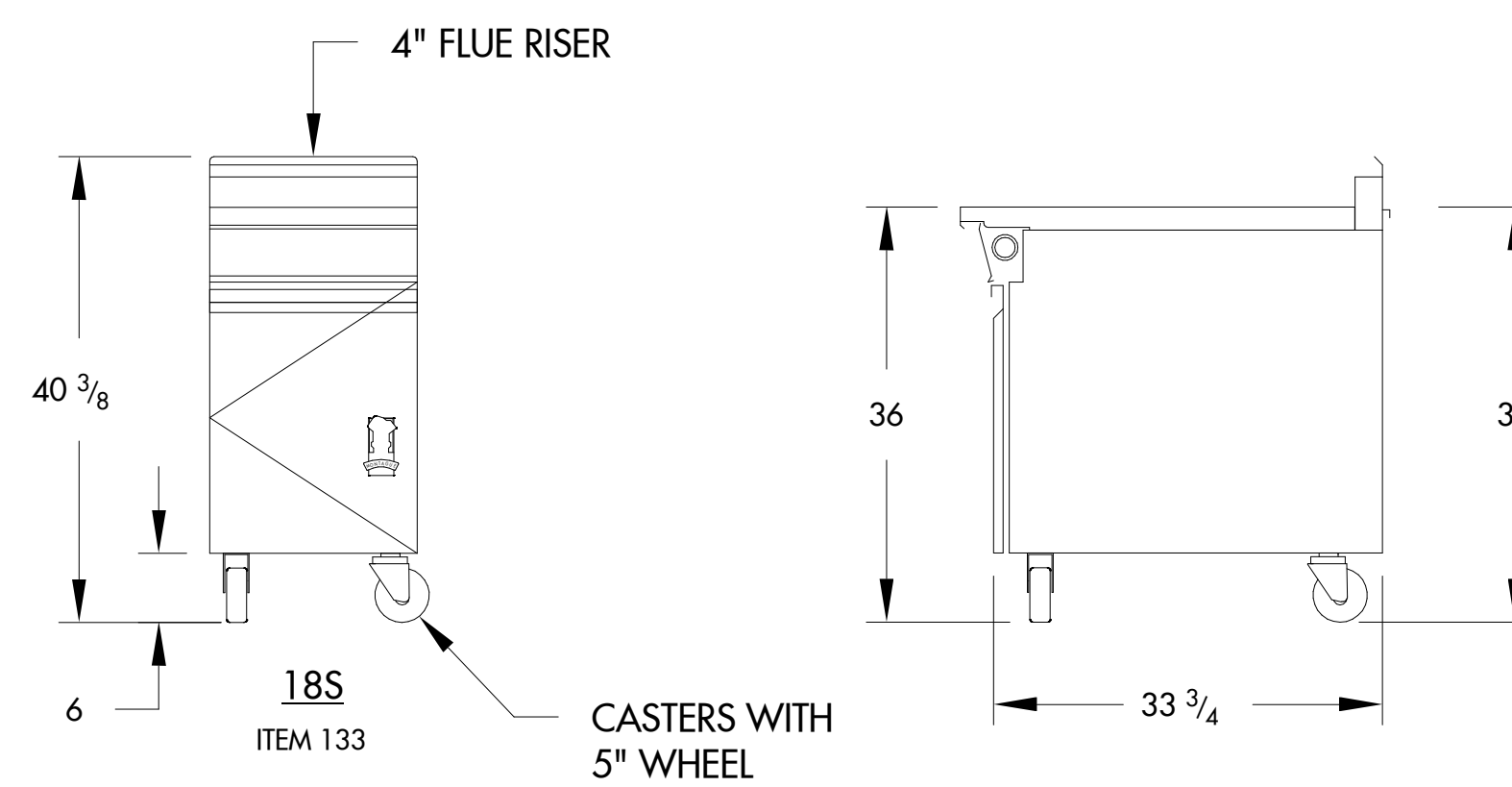
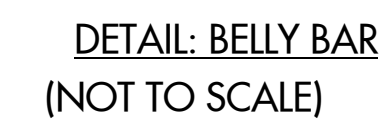
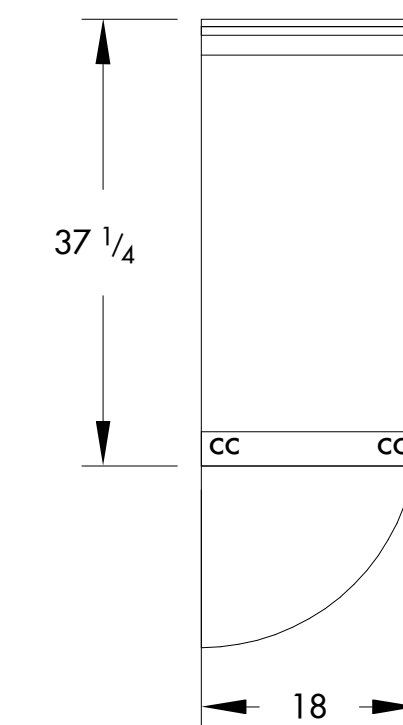
PROJECT #: - DRAWN: EGM

FOODSERVICE COOKING  
BATTERY DETAILS

SHEET #:

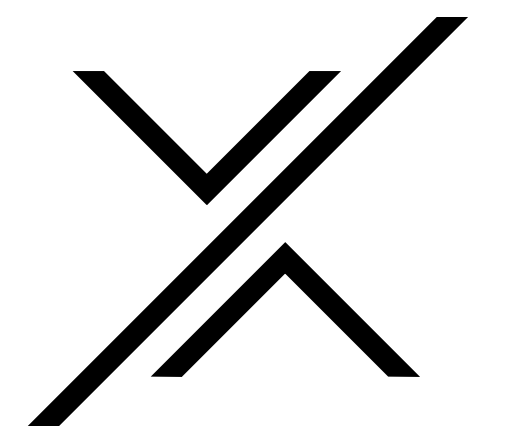
601-CB

**WYNDEMERE CC  
IMPLEMENTATION TB LW**

PRODUCTION SUBMITTAL

NOTE:  
GUARD RAIL IS NOT DESIGNED TO SUPPORT EXCESSIVE  
WEIGHT ON THE BELLY BAR, NOR  
IS IT SUITABLE FOR USE AS A LIFTING HANDLE.

700 WYNDEMERE WAY  
NAPLES, FL 34105



**NSD**  
FOODSERVICE  
CONSULTANTS

**NEXT STEP DESIGN**  
913 West Street Annapolis, MD 21401  
Ph: (410) 263-1200  
nextstepdesign.com

DATE: 12/18/20 SCALE: 3/4" = 1'-0"

PROJECT #: DRAWN: Author

### FOODSERVICE COOKING BATTERY DETAILS

SHEET #:

602-CB

## COOKING BATTERY DETAILS

—SCALE AS NOTED

**COPYRIGHT®**  
UNAUTHORIZED USE OF THE FOODSERVICE DESIGN, DETAILS, AUTOCAD BLOCKS, REVIT FAMILIES, AND SPECIFICATIONS  
CONTAINED IN THESE DOCUMENTS IS STRICTLY PROHIBITED. NSD, INC. MAINTAINS OWNERSHIP OF SAME. THIS PROHIBITION  
EXTENDS FROM PRINTED MATERIAL TO ANY ELECTRONIC VERSIONS OF THE SAME. NO USE, OTHER THAN THAT FOR WHICH IT  
IS INTENDED, IS STRICTLY PROHIBITED WITHOUT WRITTEN PERMISSION FROM NEXT STEP DESIGN, INC. ALL RIGHTS RESERVED.