
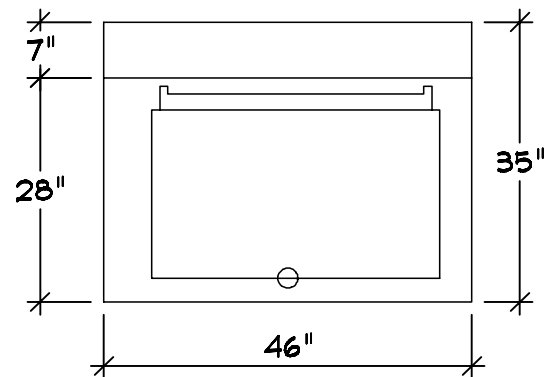
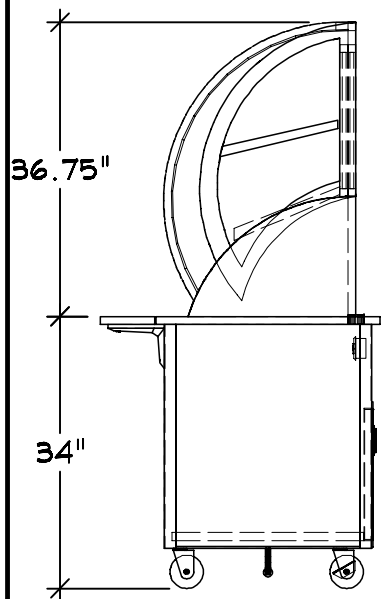
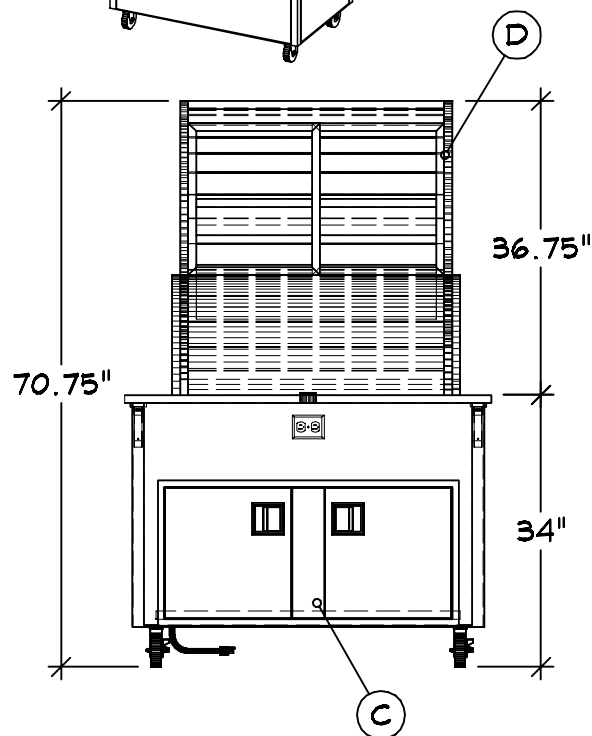
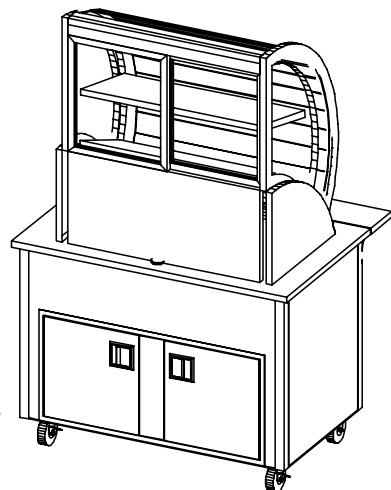
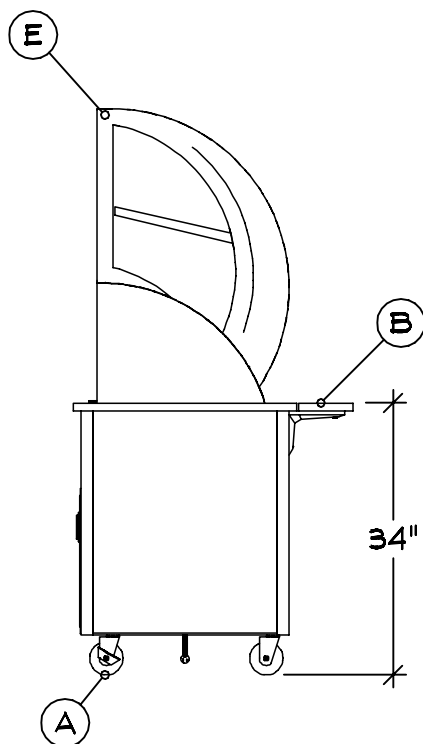
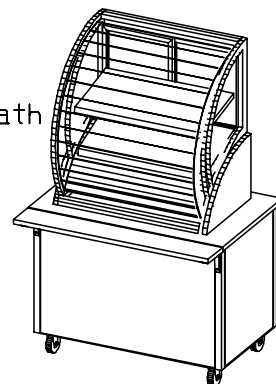


| | |
|---|---------------------------------|
| W5PRV | |
| WACO - PROVIDENT E5 | |
|  | 04-27-22 |
| THE VOLLRATH CO., LLC | COPYRIGHT 2022 SHEBOYGAN, WI |



A Top Layout Operator L-R
 Item 1a Part Number 40886
 Counter Cold Display Shelf
 Supplied And Installed By Vollrath



- Server 1 | Qty 1
 Utility Counter
 A Casters : 4* (2) w/Brakes
 B Customer Side Plate Rest
 w/Lift-off Bracket
 C Storage Shelf w/ Hinged
 Sliding Doors And Lock
 D Receptacle : (1) Interior
 With Cord Grommet
 E Overshelf Breath Guard

Finishes And Materials
 Top : 16 Ga SST
 Body : Standard Black
 Trim : Standard SST

VOLTS 120
 0 1 4.3 A
 60
 1 1
 ELECTRICAL
 NEMA 5-15

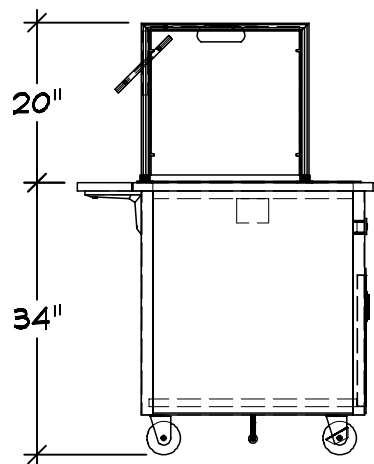
W5PRV

WACO - PROVIDENT ES

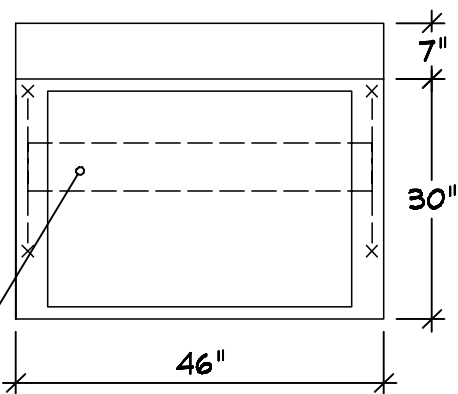
VOLLRATH

THE VOLLRATH CO., LLC

04-27-22
 COPYRIGHT 2022
 SHEBOYGAN, WI

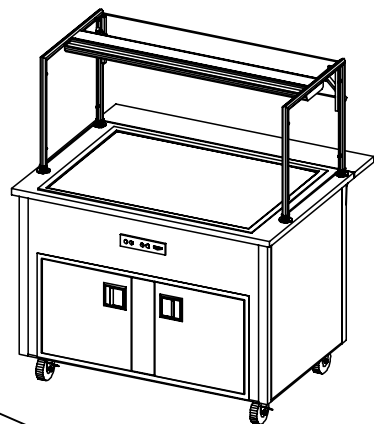


(B)

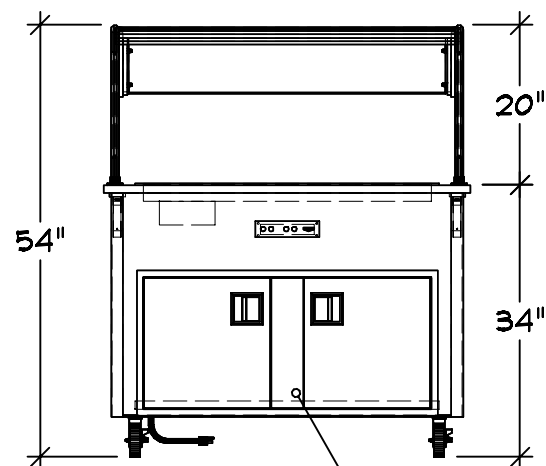
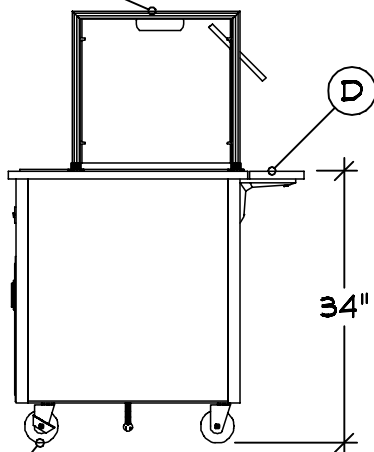


(A)

A Top Layout Operator L-R
Dropin Shelf Display Shelf
Tstat Controls
Supplied And Installed By Vollrath



(F)



(E)

Server 2 | Qty 1
Utility Counter
A Custom Configuration
B Custom Counter Width & Height
C Casters : 4" (2) w/Brakes
D Receptacle : (1) Interior With Cord Grommet

Single Side Buffet
Adjustable Front Glass
Full Width S-S
Heat Strip
LED Light Strip
End Panel Operator Left Side

Finishes And Materials
Top : 16 Ga SST
Body : Standard Black
Trim : Standard SST

VOLTS 120 60 ELECTRICAL
Ø 1 1/2 NEMA 5-15
10.8 A

W5PRV

WACO - PROVIDENT ES

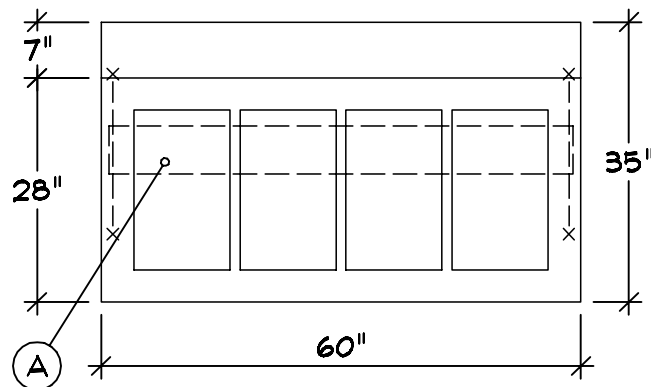
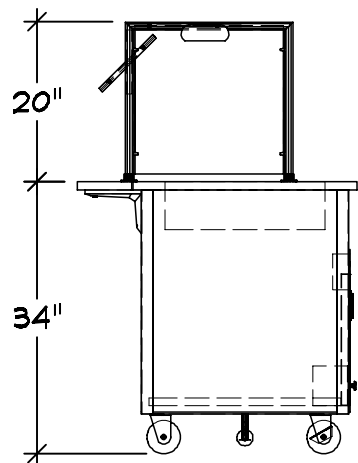
VOLLRATH

04-27-22

COPYRIGHT 2022

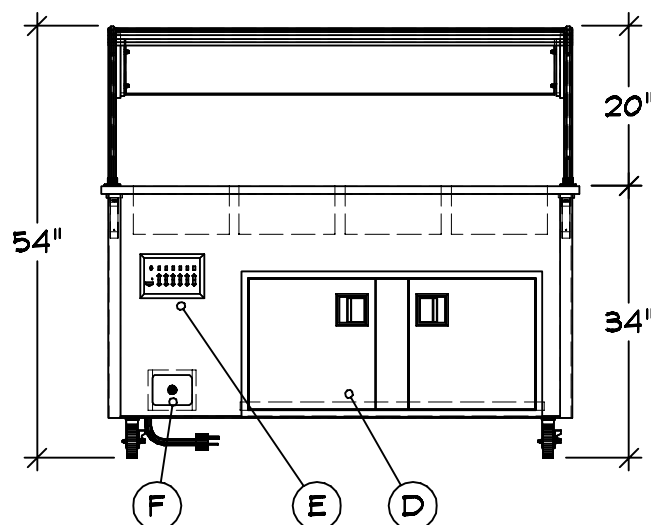
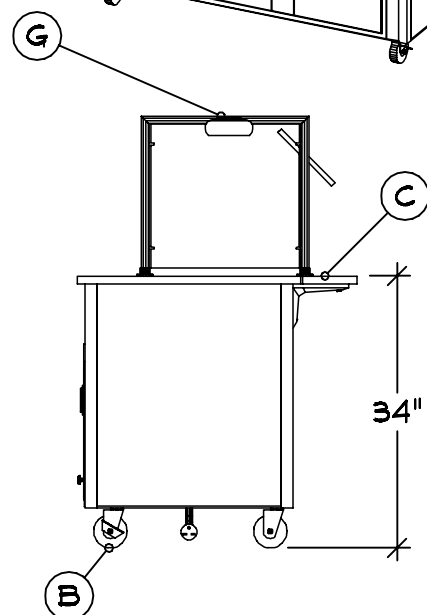
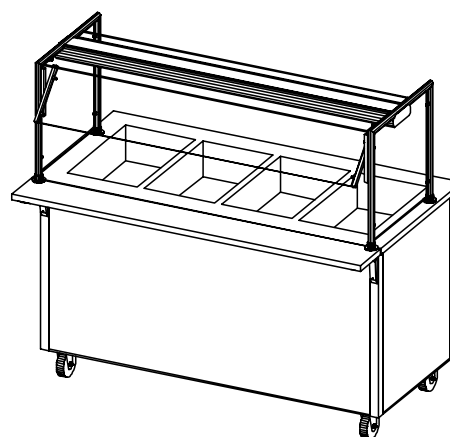
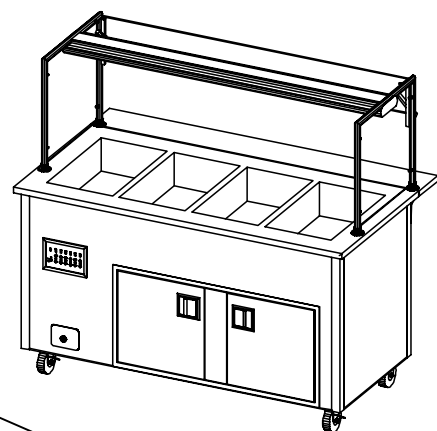
THE VOLLRATH CO., LLC

SHEBOYGAN, WI



Server 3 | Qty 1
Utility Counter
A Custom Configuration
B Custom Counter Depth
C Casters : 4" (2) w/Brakes
D Customer Side Plate Rest
w/Lift-off Bracket
E Storage Shelf w/ Hinged
Doors And Lock
F Velocity Breath Guard

Single Side Buffet
Adjustable Front Glass
Full Width S-S
Heat Strip
LED Light Strip



Finishes And Materials

Top : ** 14 Ga SST
Body : Standard Black
Trim : Standard SST
Plate Rest : 18 Ga SST
Storage Door : To Match Base
Breath Grd : Polished SST

VOLTS 208
Ø 1
21.3A

ELECTRICAL
NEMA 14-3Ø

| Equipment | Voltage | L1Amp | L2Amp |
|-------------|---------|-------|-------|
| 4 Hot Wells | 208 | 12.0 | 12.0 |
| Heat Strip | 208 | 9.3 | 9.3 |
| Total Amps | | 21.3 | 21.3 |

W5PRV

WACO - PROVIDENT ES

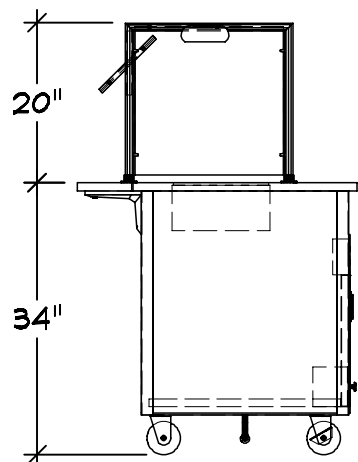


04-27-22

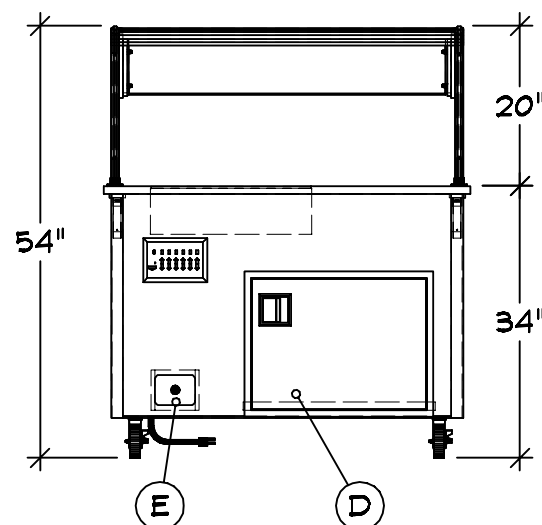
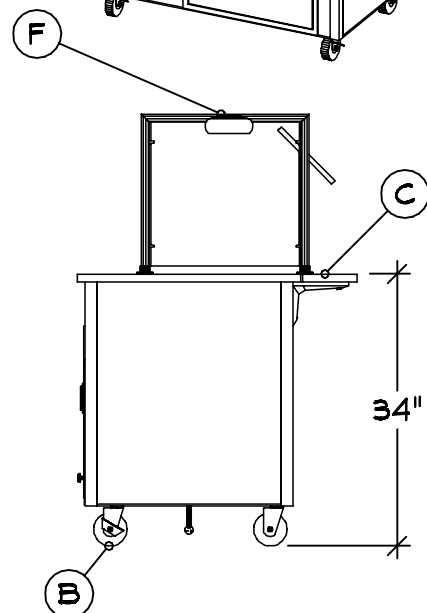
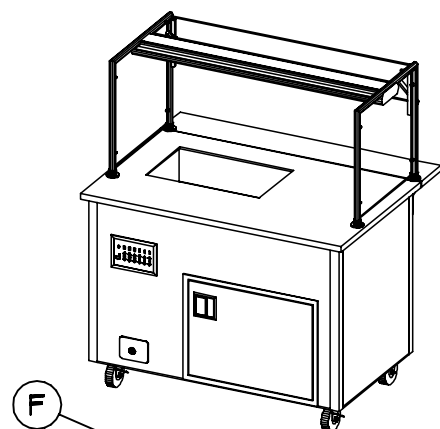
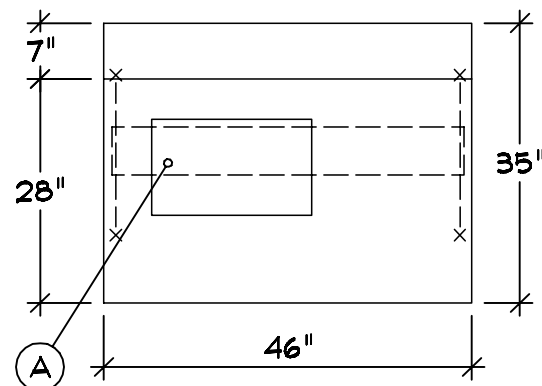
COPYRIGHT 2022

THE VOLLRATH CO., LLC

SHEBOYGAN, WI



A Top Layout Operator L-R
 (1) Integrated Wet Hot Well
 625 Watt Well
 Short Side Orientation
 Open Work Top



- Server 4 | Qty 1
 Hot Food Counter
 A 4 Individual Wet Hot Wells
 B Casters : 4" (2) w/Brakes
 C Customer Side Plate Rest
 w/Lift-off Bracket
 D Storage Shelf w/ Hinged
 Doors And Lock
 E Controls : Touch Temp
 F Drain : 1\2" w/ Ball Valve
 G Velocity Breath Guard

Single Side Buffet
 Adjustable Front Glass
 Full Width S-S
 Heat Strip
 LED Light Strip

Finishes And Materials

Top : ** 14 Ga SST
 Body : Standard Black
 Trim : Standard SST
 Plate Rest : 18 Ga SST
 Storage Door : To Match Base
 Breath Grd : Polished SST

| | | | |
|-------|-------|----|------------|
| VOLTS | 120 | 60 | ELECTRICAL |
| Ø | 1 | W | NEMA 5-20 |
| | 12.2A | | |

Equipment Voltage L1Amp

Hot Well 120 5.2

Heat Strip 120 7.0

Total Amps 12.2

PLUMBING CW: -
 HW: -
 WASTE: (1) Ø.5" INDIRECT

W5PRV

WACO - PROVIDENT ES

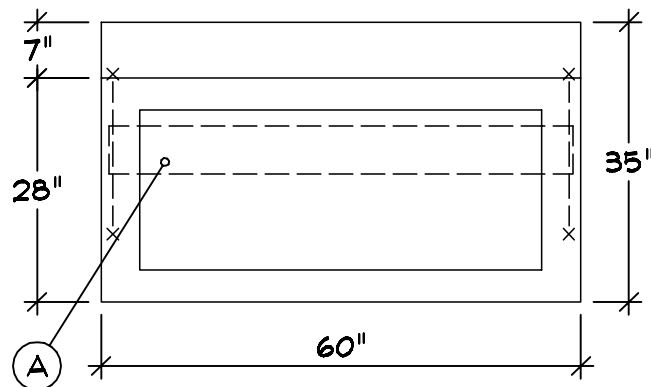
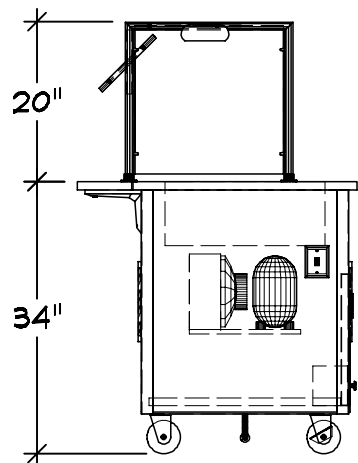


04-27-22

COPYRIGHT 2022

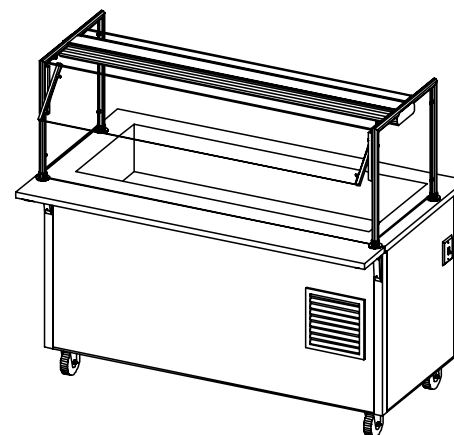
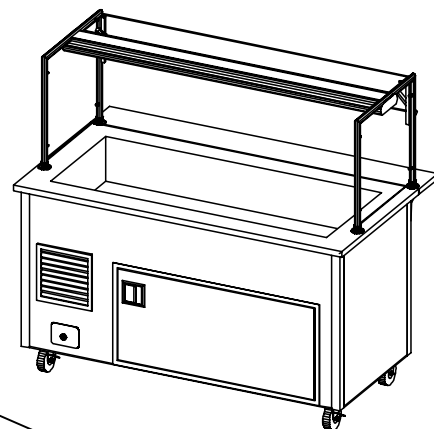
THE VOLLRATH CO., LLC

SHEBOYGAN, WI



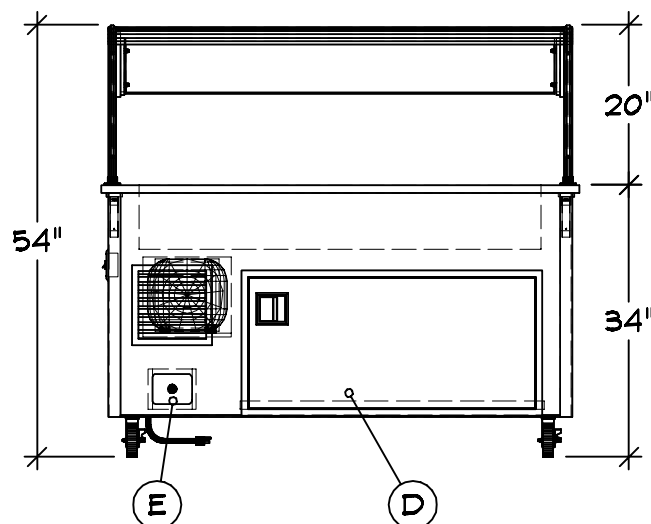
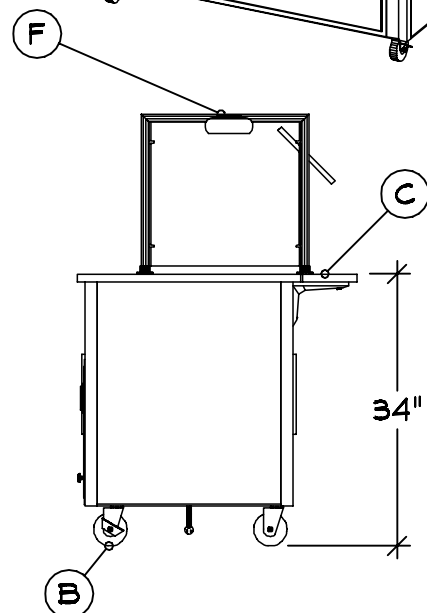
Server 5 | Qty 1
Utility Counter
A Custom Configuration
B Casters : 4" (2) w/Brakes
C Customer Side Plate Rest
w/Lift-off Bracket
D Storage Shelf w/ Hinged
Doors And Lock
E Drain : 1 1/2" w/ Ball Valve
F Velocity Breath Guard

Single Side Buffet
Adjustable Front Glass
Full Width S-S
LED Light Strip



Finishes And Materials

Top : ** 14 Ga SST
Body : Standard Black
Trim : Standard SST
Plate Rest : 18 Ga SST
Storage Door : To Match Base
Breath Grd : Polished SST



VOLTS 120
Ø 1
3.9A
60
ELECTRICAL
NEMA 5-15

PLUMBING CW: -
HW: -
WASTE: (1) Ø.5" INDIRECT
W5PRV

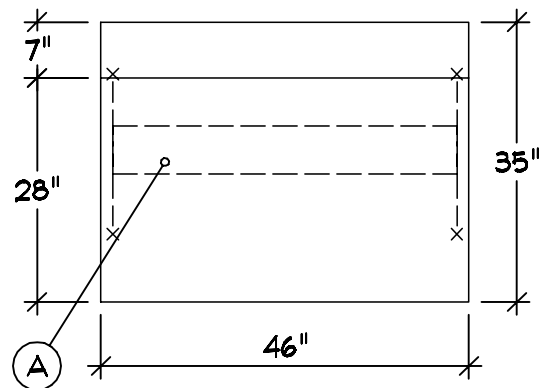
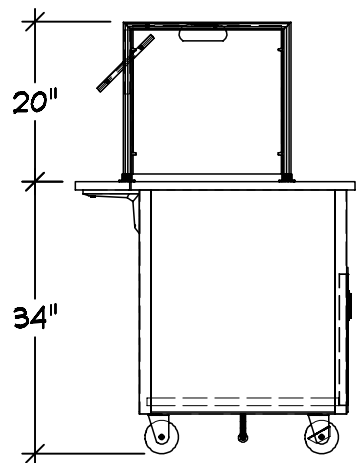
WACO - PROVIDENT ES

VOLLRATH

04-27-22

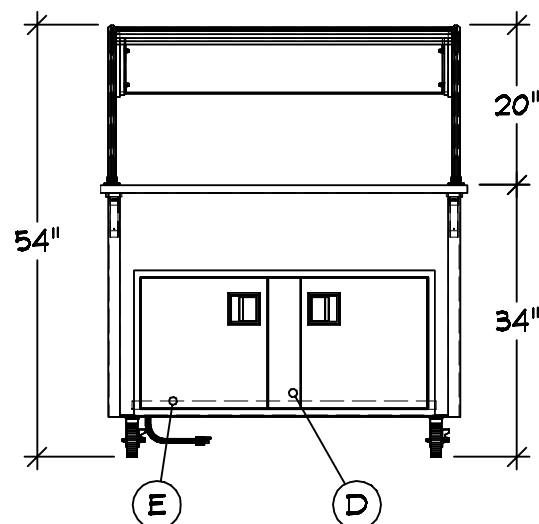
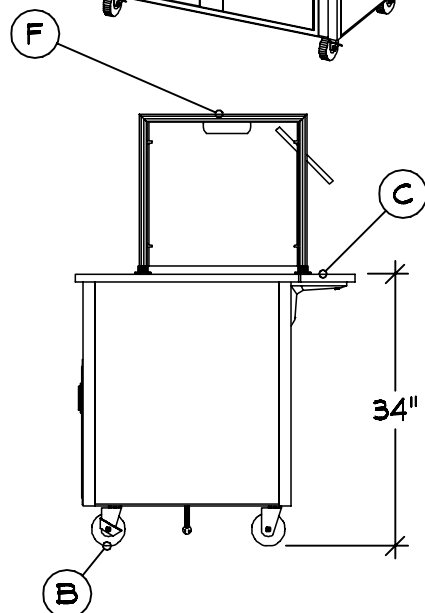
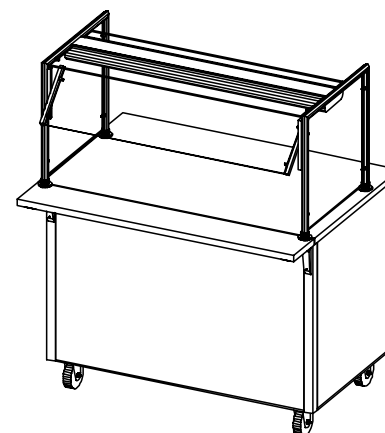
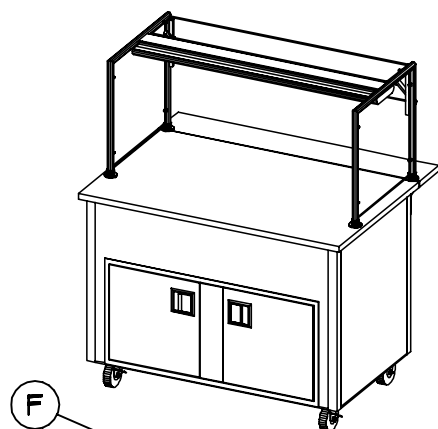
COPYRIGHT 2022
SHEBOYGAN, WI

THE VOLLRATH CO., LLC



- Server 6 | Qty 1
 Cold Food Counter
 A (1) 4 Pan Cold Well
 B Casters : 4" (2) w/Brakes
 C Customer Side Plate Rest
 w/Lift-off Bracket
 D Storage Shelf w/ Hinged
 Doors And Lock
 E Drain : 1 1/2" w/ Ball Valve
 F Velocity Breath Guard

Single Side Buffet
 Adjustable Front Glass
 Full Width S-S
 LED Light Strip



Finishes And Materials

Top : ** 14 Ga SST
 Body : Standard Black
 Trim : Standard SST
 Plate Rest : 18 Ga SST
 Storage Door : To Match Base
 Breath Grd : Polished SST

VOLTS 120
 1
 3.9A
 60
 1/2
 1
 ELECTRICAL
 NEMA 5-15

PLUMBING CW: -
 HW: -
 WASTE: (1) 0.5" INDIRECT
 W5PRV

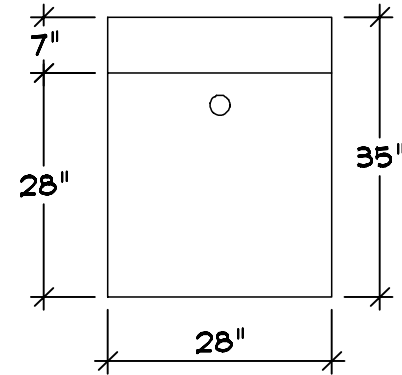
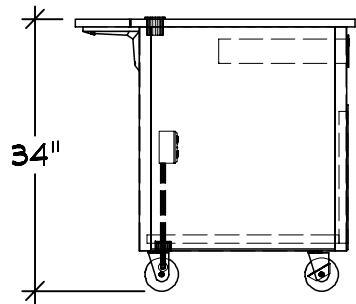
WACO - PROVIDENT ES



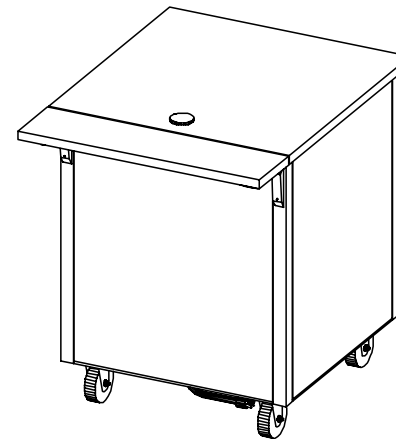
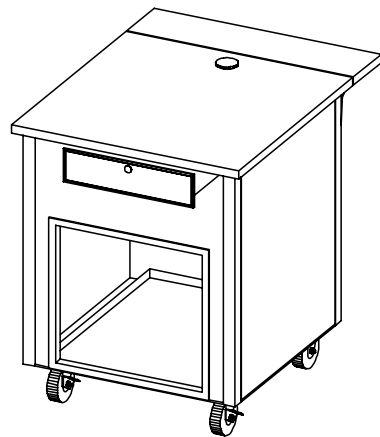
04-27-22

COPYRIGHT 2022
 SHEBOYGAN, WI

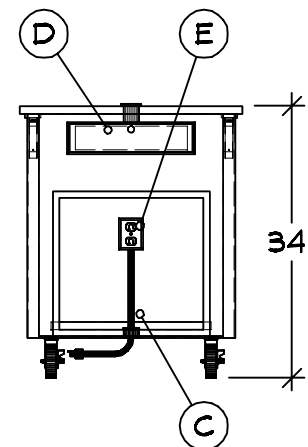
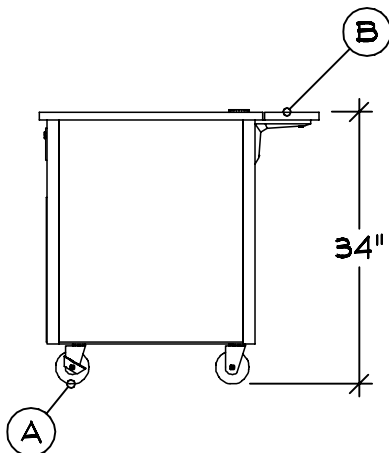
THE VOLLRATH CO., LLC



Server 7 | Qty 1
Utility Counter
A Custom Counter Width
B Casters : 4" (2) w/Brakes
C Customer Side Plate Rest
w/Lift-off Bracket
D Storage Shelf w/ Hinged
Doors And Lock
E Velocity Breath Guard



Finishes And Materials
Top : ** 14 Ga SST
Body : Standard Black
Trim : Standard SST
Plate Rest : 18 Ga SST
Storage Door : To Match Base
Breath Grd : Polished SST



VOLTS 120
Ø 1
10.0 Max A
60
ELECTRICAL
NEMA 5-15

W5PRV

WACO - PROVIDENT ES



04-27-22

THE VOLLRATH CO., LLC

COPYRIGHT 2022
SHEBOYGAN, WI

GENERAL NOTES - PLEASE READ

CONFIGURATION:

THESE DRAWINGS ARE TO BE USED IN CONJUNCTION WITH THE PREPARED QUOTATION AND MUST BE RECONCILED PRIOR TO RELEASE FOR FABRICATION.

DIMENSIONS:

ALL DIMENSIONS SHOWN ARE $\pm 1/4"$

CONNECTIONS:








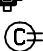




ALL PIPING, FITTINGS, AND INTERCONNECTION SERVICES SHOWN ARE TO BE SUPPLIED AND INSTALLED BY LICENSED CONTRACTORS IN ACCORDANCE WITH ALL LOCAL CODES.

BY OTHERS:

VERIFY ALL EQUIPMENT LISTED AS BY OTHERS FOR SIZE AND MECHANICAL SERVICE REQUIREMENTS.

NOTE:

IN LINE WITH THE POLICY TO CONTINUALLY IMPROVE ITS PRODUCTS, THE MANUFACTURE RESERVES THE RIGHT TO CHANGE MATERIALS AND SPECIFICATIONS WITHOUT NOTICE.

| | |
|---|------------------|
|  | CONNECTION POINT |
|  | COLD WATER |
|  | HOT WATER |
|  | HOT + COLD WATER |
|  | DRAIN |
|  | POWER |
|  | SWITCH |
|  | CORD SET |
|  | CONV OUTLET RECP |
|  | DUPLEX RECPTACLE |
|  | SINGLE RECPTACLE |
|  | REFRIGERATION |



CONFIDENTIAL DESIGN

The Vollrath Company, L.L.C. ("Vollrath") considers this new design proprietary and confidential. Due to the existing relationship of trust and good faith between Vollrath and Recipient, Vollrath is providing this proprietary and confidential design and related information to Recipient with the understanding that Recipient will maintain such design and information in secrecy and will not directly or indirectly use, disseminate, or otherwise disclose this proprietary and confidential information to any outside person or organization without the express written prior consent of The Vollrath Company, L.L.C.

04-15-2022

04-21-2022 : 07:30:19a

04-27-2022 : 11:39:15a

W5PRV

WACO - PROVIDENT ES



THE VOLLRATH CO., LLC

04-27-22

COPYRIGHT 2022
SHEBOYGAN, WI