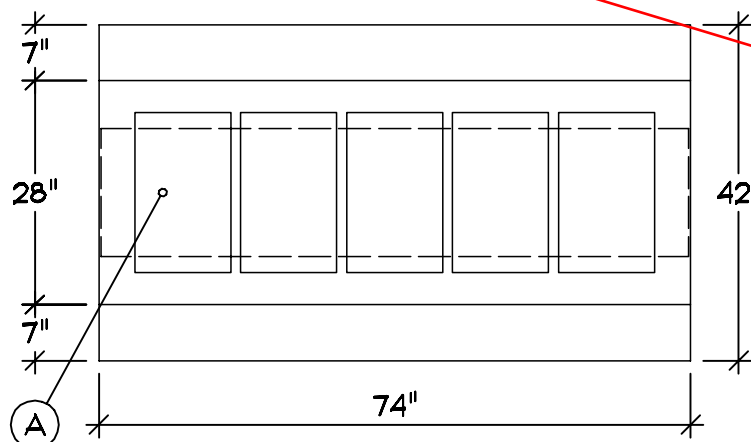
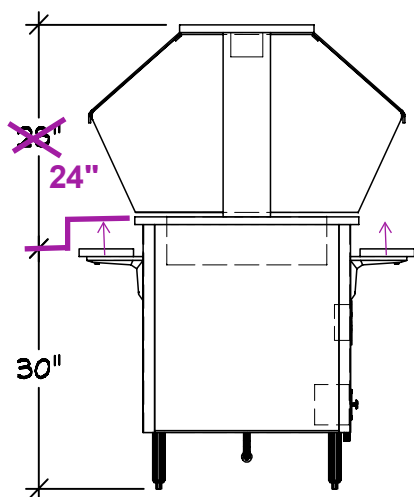


with 625 watt elements



Server 42 | Qty 1
Hot Food Counter
A 5 Individual Wet Hot Wells
B Custom Counter Height
C Legs : 6" Adjustable
D Customer Side Plate Rest
w/ Lift-off Bracket, 30" AFF
E Operator Side Plate Rest
w/ Lift-off Bracket, 30" AFF
F Controls : Touch Temp
G Drain : 1/2" Drain With
Ball Valve, Extend Copper
Drain Pipe Thru Bottom Of
Base
H Access Breath Guard
NSF Double Side Buffet
With Adjustable Height Frame
Full Width S-S
Fluorescent Lights
On Board Switch
End Panels Both Sides

with flip-up breath guards

SELECTED BY ARCHITECT

Finishes And Materials

Top : 16 Ga SST
Body Formica D504
Trim : Standard SST
Plate Rest : 18 Ga SST
Breath Grd : SST Frame, Top
Shelf To Match Body

WILSONART D504-60
FOSSIL SHALE LAM

VOLTS 208
Ø 1
15.3A
ELECTRICAL
NEMA 14-20

PLUMBING CW: -
HW: -
WASTE: (1) Ø.5" INDIRECT

MPLW2

MAPLEWOOD SCHOOL - 2



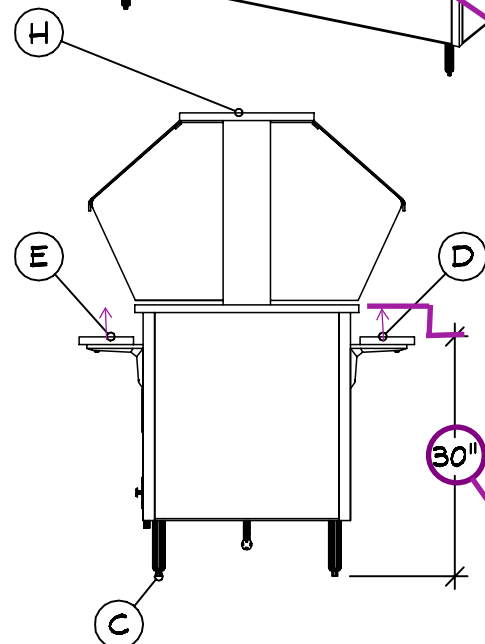
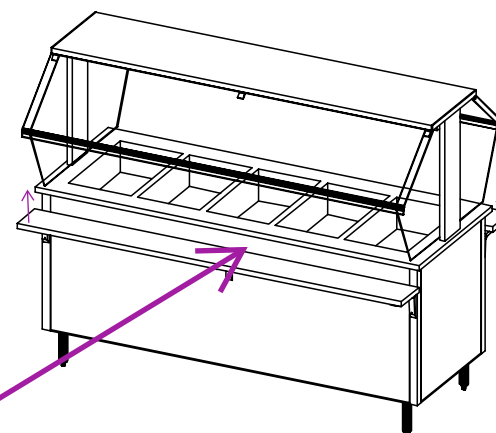
07-21-21
COPYRIGHT 2021
SHEBOYGAN, WI

THE VOLLRATH CO., LLC

with (1) Vollrath
#19199 sheet
pan adapter



TOP & TRAY SLIDES
FLUSH AT 30" A.F.F.



COUNTER TOP & TRAY SLIDES

