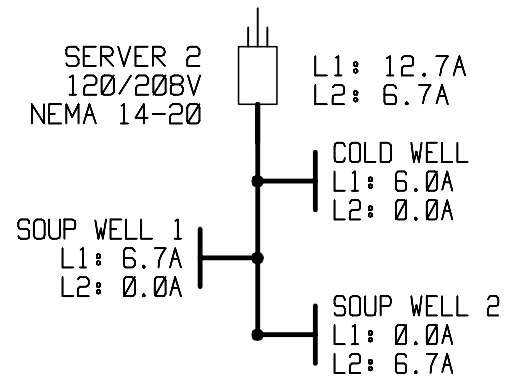
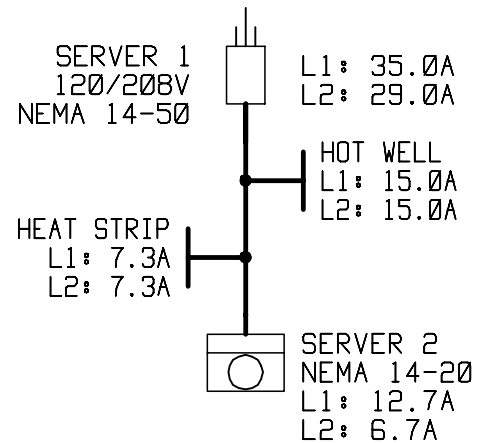


# OPTIONAL DAISY CHAIN POWER



MARUK

MARUKAI MARKET

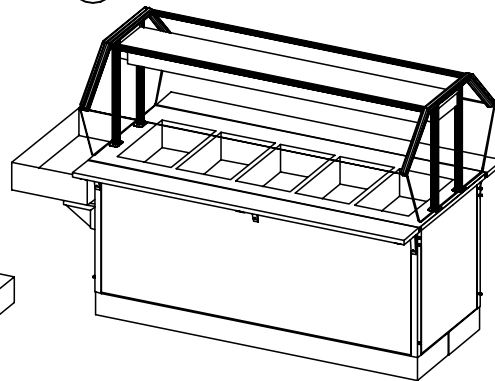
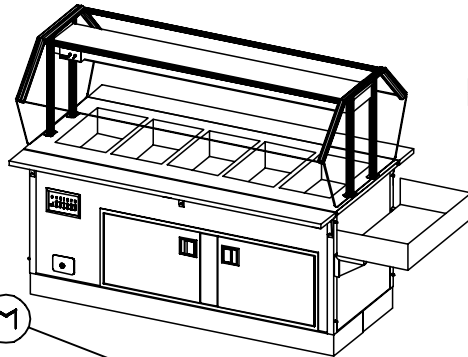
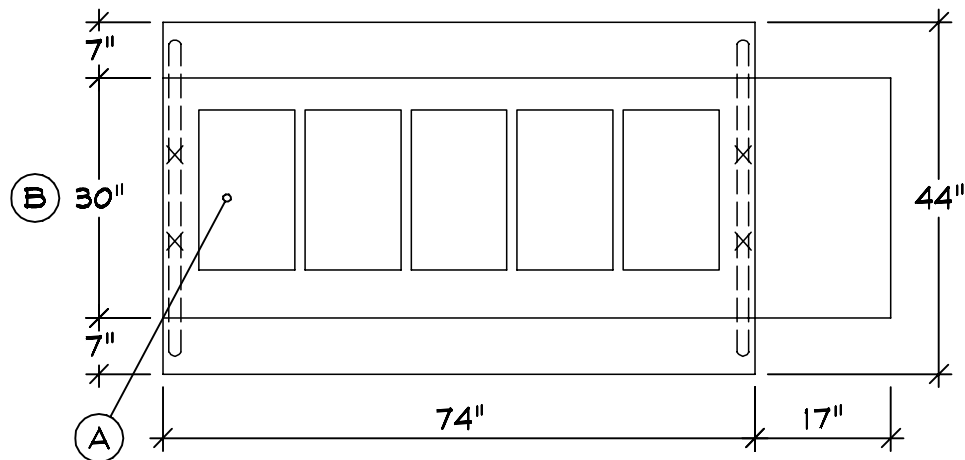
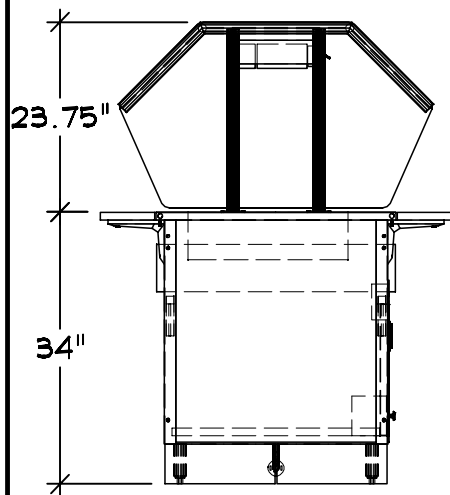
**VOLLRATH**

THE VOLLRATH CO., LLC

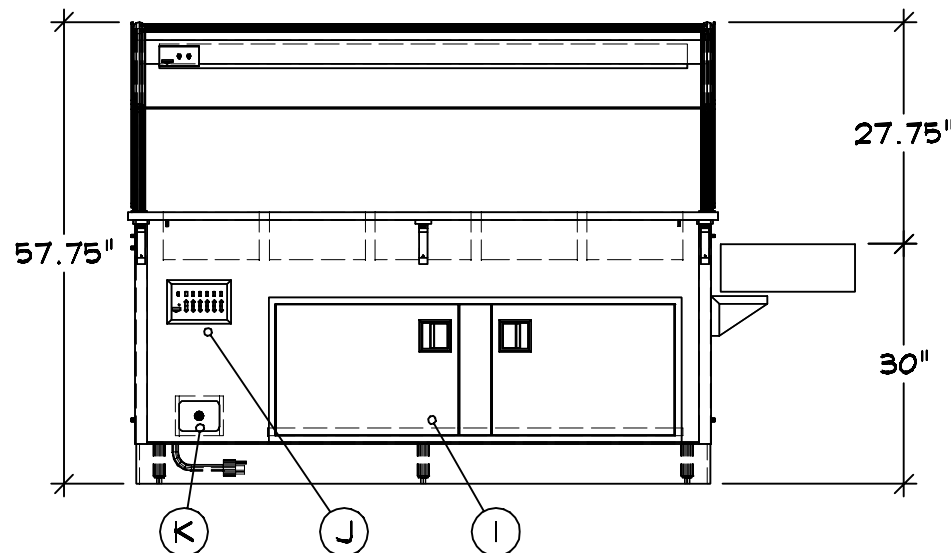
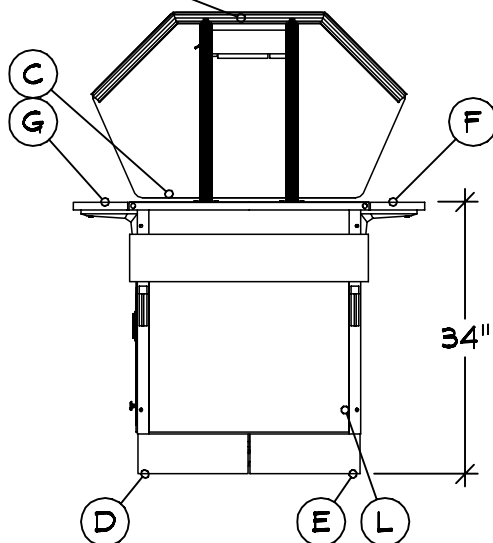
10-01-22

COPYRIGHT 2022

SHEBOYGAN, WI



VOLTS	208	Ø	1	22.3 A	Ø6	ELECTRICAL	NEMA 14-3Ø
-------	-----	---	---	--------	----	------------	------------



- Server 1 | Qty 1  
 Hot Food Counter  
 A 5 Individual Wet Hot Wells  
 B Custom Counter Depth  
 C Line Up Locks  
 D Legs : 4" Adjustable  
 E Skirt : SST Toe Kick Alls  
 F Customer Side Plate Rest  
 w/Lift-off Bracket  
 G Operator Side Rest w/  
 Lift-off Bracket  
 H Operator RH End Shelf w/  
 Fixed Brackets  
 I Storage Shelf w/ Hinged  
 Doors And Lock  
 J Controls : Touch Temp  
 K Drain : 1½" w/ Ball Valve  
 L Filler Panels And Studs  
 M Traditional Breath Guard

NSF Double Side Buffet  
 With Top Shelf  
 Full Width S-S  
 Cayenne Heat Strip  
 On Board Switches  
 End Panels Both Sides

#### Finishes And Materials

Top : \*\* 14 Ga SST  
 Body : Standard Black  
 Trim : Standard SST  
 Tray Rail : 18 Ga SST  
 Plate Rest : 18 Ga SST  
 Filler : 18 Ga SST  
 End Shelf : 16 Ga SST  
 Storage Door : To Match Base  
 Breath Grd : Matte Aluminum

Equipment	Voltage	L1Amp	L2Amp
Woth Wells	208	15.0	15.0
Heat Strip	208	7.3	7.3
Total Amps		22.3	22.3

PLUMBING CW: -  
 HW: -  
 WASTE: (1) Ø.5" INDIRECT

MARUK

MARUKAI MARKET



THE VOLLRATH CO., LLC

10-01-22  
 COPYRIGHT 2022  
 SHEBOYGAN, WI



## GENERAL NOTES - PLEASE READ

### CONFIGURATION:

THESE DRAWINGS ARE TO BE USED IN CONJUNCTION WITH THE PREPARED QUOTATION AND MUST BE RECONCILED PRIOR TO RELEASE FOR FABRICATION.

### DIMENSIONS:

ALL DIMENSIONS SHOWN ARE  $\pm 1/4"$

### CONNECTIONS:








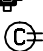




ALL PIPING, FITTINGS, AND INTERCONNECTION SERVICES SHOWN ARE TO BE SUPPLIED AND INSTALLED BY LICENSED CONTRACTORS IN ACCORDANCE WITH ALL LOCAL CODES.

### BY OTHERS:

VERIFY ALL EQUIPMENT LISTED AS BY OTHERS FOR SIZE AND MECHANICAL SERVICE REQUIREMENTS.

### NOTE:

IN LINE WITH THE POLICY TO CONTINUALLY IMPROVE ITS PRODUCTS, THE MANUFACTURE RESERVES THE RIGHT TO CHANGE MATERIALS AND SPECIFICATIONS WITHOUT NOTICE.

	CONNECTION POINT
	COLD WATER
	HOT WATER
	HOT + COLD WATER
	DRAIN
	POWER
	SWITCH
	CORD SET
	CONV OUTLET RECP
	DUPLEX RECPTACLE
	SINGLE RECPTACLE
	REFRIGERATION



## CONFIDENTIAL DESIGN

The Vollrath Company, L.L.C. ("Vollrath") considers this new design proprietary and confidential. Due to the existing relationship of trust and good faith between Vollrath and Recipient, Vollrath is providing this proprietary and confidential design and related information to Recipient with the understanding that Recipient will maintain such design and information in secrecy and will not directly or indirectly use, disseminate, or otherwise disclose this proprietary and confidential information to any outside person or organization without the express written prior consent of The Vollrath Company, L.L.C.

08-16-2022

08-16-2022 : 12:09:38p

08-17-2022 : 03:53:44p

09-29-2022 : 07:05:49a

10-01-2022 : 08:31:12a

MARUK

MARUKAI MARKET



THE VOLLRATH CO., LLC

10-01-22

COPYRIGHT 2022  
SHEBOYGAN, WI