



Specifications

12/01/2021

To
Gold Star Products
Jeffrey Applebaum
21680 Coolidge Hwy.
Oak Park, MI 48237-3109
248-548-9840 7500
(248)548-9840 7510 (Contact)
248-548-9844 (Fax)
jeffa@goldstarmail.com

Project
Marker 88

From
HRI Inc.- St. Clair Shores
Steve Amos
20515 Stephens St.
St Clair Shores, MI 48080
(586) 771-0335
(734)674-3354 (Contact)
(586) 771-3083 (Fax)
steve@hri-inc.com

ITEM 11 - HD RANGE, 36", 6 OPEN BURNERS (1 REQ'D)

Vulcan Model V6B36C Dimensions: 36(h) x 36(w) x 36.75(d)

V Series Heavy Duty Range, gas, 36", (6) 35,000 BTU open burners, cast iron grates, convection oven, stainless steel front, front top ledge, sides, base, burner box & stub back, 6" adjustable legs, 242,000 BTU, CSA, NSF

- 1 ea 1 year limited parts & labor warranty, standard
- 1 ea LP gas (specify elevation if over 2,000 ft.)
- 1 ea NOTE: A regulator must be used on this equipment
- 1 ea 1-1/4" front manifold connection
- 1 ea Front manifold: cap & cover, right
- 1 ea 115v/60/1-ph, 4.0 amp, fan motor voltage, cord & plug, standard
- 3 ea 4" stepped-up rear burner, 12" section
- 1 ea Fan cooling package
- 1 ea Model VOVER-72ST Stub Riser, 4", overlapping, for 72" ranges
- 1 st Model CASTERS-RR4 Casters, 5" (set of 4) (2 with locks)



ELECTRICAL

	VOLTS	CYCLE	PHASE	CONN	AFF	NEMA	AMPS	KW	HP	MCA	MOCP
1	115	60	1	Cord & Plug			4				

GAS

	SIZE	MBTU	KW	CONN
1		242.0		
2	1-1/4"			

STEAM

	INLET SIZE	RETURN SIZE	LB/HR	PSIG (MIN)	PSIG (MAX)
1					
2					

ITEM 11.1 - HD RANGE, 24", 4 OPEN BURNERS (1 REQ'D)

Vulcan Model V4B24B Dimensions: 36(h) x 24(w) x 36.75(d)

V Series Heavy Duty Range, gas, 24", (4) 35,000 BTU open burners, cast iron grates, storage base, cabinet doors, stainless steel front, front top ledge, sides, base, burner box & stub back, 140,000 BTU, 6" adjustable legs, CSA, NSF

- 1 ea 1 year limited parts & labor warranty, standard
- 1 ea LP gas (specify elevation if over 2,000 ft.)
- 1 ea Model PRESREG-LP11/4 1-1/4" NPT pressure regulator (LP gas)
- 1 ea 1-1/4" rear gas connection, standard
- 1 ea Rear gas connection: open
- 1 st Model CASTERS-RR4 Casters, 5" (set of 4) (2 with locks)



GAS

	SIZE	MBTU	KW	CONN
1		140		
2	1-1/4"			

STEAM

	INLET SIZE	RETURN SIZE	LB/HR	PSIG (MIN)	PSIG (MAX)
1					
2					

ITEM 11.2 - HD RANGE, 18", WORK TOP (1 REQ'D)**Vulcan Model VWT18B Dimensions: 36(h) x 18(w) x 36.75(d)**

V Series Heavy Duty Range, 18", work top, storage base with cabinet doors, stainless steel front, front top ledge, side, base, burner box & stub back, 6" adjustable legs, CSA, NSF



- 1 ea 1 year limited parts & labor warranty, standard
- 1 ea LP gas (specify elevation if over 2,000 ft.)
- 1 ea NOTE: A regulator must be used on this equipment
- 1 ea 1-1/4" front manifold connection
- 1 ea Front manifold: cap & cover, left
- 1 st Model CASTERS-RR4 Casters, 5" (set of 4) (2 with locks)

GAS

	SIZE	MBTU	KW	CONN
1	1-1/4"			

STEAM

	INLET SIZE	RETURN SIZE	LB/HR	PSIG (MIN)	PSIG (MAX)
1					

ITEM 12/13/14/15 - HD RANGE, 48" CHARBROILER (1 REQ'D)**12/13/14/15 -****Vulcan Model VCB48 Dimensions: 36(h) x 48(w) x 36.75(d)**

V Series Heavy Duty Range, gas, 48", modular, charbroiler, cast iron grates and char-radiants, stainless steel front, front top ledge, side, base, burner box & stub back, 4" flanged feet, 130,000 BTU, CSA, NSF



- 1 ea 1 year limited parts & labor warranty, standard
- 1 ea Gas type to be specified
- 1 ea 1-1/4" front manifold connection
- 1 ea Front manifold: cap & cover, right
- 1 ea Model VSC96 Refrigerated Base, 96", self-contained, (6) drawers, flat top, stainless steel front and sides, electric condensate evaporator, casters, cULus, NSF
- 1 ea 3 year parts & labor warranty, 2 years additional compressor parts warranty, standard
- 1 ea 3 year parts & labor warranty, 2 years additional compressor parts warranty, standard
- 1 ea Compressor on right (no charge), must be specified at time of order
- 1 ea Model VGMT36 V Series Heavy Duty Range, gas, 36", modular, griddle, 3/4" thick polished steel plate, snap action thermostatic controls, stainless steel front, top front ledge, sides, base, burner box & stub back, 4" flanged feet, 90,000 BTU, CSA Flame, CSA Star, NSF
- 1 ea 1 year limited parts & labor warranty, standard
- 1 ea Gas type to be specified
- 1 ea 1-1/4" rear gas connection, standard
- 1 ea Rear gas connection: cap and cover, both ends
- 1 ea Model TGRD48-TGA001 48" Overlapping Griddle, thermostatic controls
- 1 ea NOTE: Overlapping griddles require common front top ledge & rear riser
- 1 ea Model FRTTOP-96WLD Front Top Ledge, 96" overlapping & welded
- 1 ea Model VOVER-48ST Stub Riser, 4", overlapping, for 48" ranges
- 1 ea Model 36IRB Salamander Broiler, gas, 36" wide, 30,000 BTU heavy duty infrared burner, dual control, (6) grid positions, removable pan, stainless steel front, top and sides, 3/4" gas connection & pressure regulator
- 1 ea 1 year limited parts & labor warranty, standard
- 1 ea Natural gas (add -1 suffix) (specify elevation if over 2,000 ft.)
- 1 ea Wall mount
- 1 ea Model WALLMNT-CHRBKR Wall mount brackets, stainless steel (set) (stainless steel bottom panel required)
- 1 ea Model BOTTOM-SLMNDR Stainless bottom panel (required with wall bracket)

* 86" Refrigerated base with 4' charbroiler and 4' griddle and infrared salamander.

GAS

	SIZE	MBTU	KW	CONN
1		130.0		
2	1-1/4"			
3		90.0		
4	1-1/4"			
5	3/4"	30.0		

STEAM

	INLET SIZE	RETURN SIZE	LB/HR	PSIG (MIN)	PSIG (MAX)
1					
2					
3					
4					
5					

ITEM 21A - GAS FRYER, BATTERY (1 REQ'D)**Vulcan Model 3GR45MF Dimensions: 46.25(h) x 46.5(w) x 30.13(d)**

Fryer, gas, 46-1/2" W, (3) battery, 45-50 lb. capacity per vat, millivolt thermostat controls, KleenScreen Plus® filtration system, twin baskets, stainless steel cabinet and fry tank, adjustable casters (2 swivel locking & 2 non-locking), 360,000 BTU, CSA Star, CSA Flame, NSF

- 1 ea 1 year limited parts & labor warranty, standard
- 1 ea 10 year limited tank warranty, standard
- 1 ea Natural gas (add -1 suffix) (specify elevation if over 2,000 ft.)
- 1 ea 120v/60/1-ph, 1/3 hp, 6.0 amps, NEMA 5-15P, for filter, standard
- 1 ea Model COVER-TANK Stainless steel tank cover/work surface top, for all 35 & 45 lb. gas fryers & Frymate VX15

* FREE STANDING FRYER SYSTEM WITH BUILT-IN FILTER SYSTEM.

**ELECTRICAL**

	VOLTS	CYCLE	PHASE	CONN	AFF	NEMA	AMPS	KW	HP	MCA	MOCP
1	120	60	1	Cord & Plug		5-15P	6		1/3		

GAS

	SIZE	MBTU	KW	CONN
1	1-1/4"	360.0		

STEAM

	INLET SIZE	RETURN SIZE	LB/HR	PSIG (MIN)	PSIG (MAX)
1					

ITEM 22 - CONVECTION OVEN, GAS (1 REQ'D)**Vulcan Model VC44GD Dimensions: 70(h) x 40(w) x 42.25(d)**

Convection Oven, gas, double-deck, standard depth, solid state controls, electronic spark igniters, 60 minute timer, (5) nickel plated racks per oven, 8" high legs, stainless steel front, top and sides, stainless steel doors with windows, 50,000 BTU each section, NSF, CSA Star, CSA Flame, ENERGY STAR®

- 1 ea 1 year limited parts & labor warranty, standard
- 1 ea Natural gas (add -1 suffix) (specify elevation if over 2,000 ft.)
- 1 ea (2) 120v/60/1-ph, 15.4 amps total, (2) 6' cords with plugs, standard
- 1 ea Gas manifold piping included with stacking kit to provide single point gas connection
- 1 st Casters, set of (4) in lieu of standard legs

**ELECTRICAL**

	VOLTS	CYCLE	PHASE	CONN	AFF	NEMA	AMPS	KW	HP	MCA	MOCP
1	120	60	1	Cord & Plug			7.7				
2	120	60	1	Cord & Plug			7.7				

GAS

	SIZE	MBTU	KW	CONN
1	3/4"	100.0		

STEAM

	INLET SIZE	RETURN SIZE	LB/HR	PSIG (MIN)	PSIG (MAX)
1					

ITEM 27 - COMBI OVEN, GAS (2 REQ'D)**Vulcan Model ABC7G-NAT Dimensions: 35(h) x 42.2(w) x 42.4(d)**

Combi Oven/Steamer, natural gas, boilerless, (7) 18" x 26" full size sheet or (14) 12" x 20" full size hotel pan capacity, (3) knobs with LED displays for temperature, timer & humidity, auto-adjustment of humidity with temperature selection, auto-reversing fan with electronic braking system, cool to touch glass door, flashing door light and audible alert, (4) Grab n Go wire racks, stainless steel interior & exterior, 80,000 BTU, 120v/60/1-ph, engineered & assembled in USA, NSF/ANSI 4, cULus



- 2 ea 1 year limited parts & labor warranty, standard
- 2 ea Filtration System
- 2 ea NOTE: Water is a customer supplied utility just like Gas and Electric to the equipment. Proper Water Filtration based on customer water quality is essential to meet the equipment water spec requirements. Verify type of filtration needed based on performing a cold water analysis from the customer site. A suitable Water Treatment System and regular filter replacements coupled with routine cleaning/deliming is required.
- 2 ea Model CB30K-SYSTEM Single Hollow Carbon Filter System, with 30,000 gallon capacity, for chlorine and chloramine reduction, sediment, bad tastes & odors, total organic compounds, tannins & trihalomethanes, ANSI/NSF 42 & 53
- 2 ea Opted out of Reverse Osmosis System
- 1 ea Model STACK-ABC/G Stacking Kit, gas, for (2) ABC7G Combi, includes: vent kit, spray hose, drip tray & casters
- 1 ea Model SPRAY-ABC Spray Hose Kit, Provided with ABC Stand or ABC Stacking Kits - includes spray handle, 8 ft. stainless steel braided hose and mounting hardware

ELECTRICAL

	VOLTS	CYCLE	PHASE	CONN	AFF	NEMA	AMPS	KW	HP	MCA	MOCP
1	120	60	1	Cord & Plug		5-15P					

GAS

	SIZE	MBTU	KW	CONN
1	3/4"	80.0		

STEAM

	INLET SIZE	RETURN SIZE	LB/HR	PSIG (MIN)	PSIG (MAX)
1					

WATER

	HOT SIZE	HOT AFF	HOT GPH	COLD SIZE	COLD AFF	FILTERED SIZE	FILTERED AFF	CONDENSER INLET SIZE	CONDENSER OUTLET SIZE
1				3/4"		3/4"			

WASTE

	INDIRECT SIZE	DIRECT SIZE
1	1"	

ITEM 28 - COMBI OVEN, GAS (2 REQ'D)**Vulcan Model ABC7G-NAT Dimensions: 35(h) x 42.2(w) x 42.4(d)**

Combi Oven/Steamer, natural gas, boilerless, (7) 18" x 26" full size sheet or (14) 12" x 20" full size hotel pan capacity, (3) knobs with LED displays for temperature, timer & humidity, auto-adjustment of humidity with temperature selection, auto-reversing fan with electronic braking system, cool to touch glass door, flashing door light and audible alert, (4) Grab n Go wire racks, stainless steel interior & exterior, 80,000 BTU, 120v/60/1-ph, engineered & assembled in USA, NSF/ANSI 4, cULus



- 2 ea 1 year limited parts & labor warranty, standard
- 2 ea Filtration System
- 2 ea NOTE: Water is a customer supplied utility just like Gas and Electric to the equipment. Proper Water Filtration based on customer water quality is essential to meet the equipment water spec requirements. Verify type of filtration needed based on performing a cold water analysis from the customer site. A suitable Water Treatment System and regular filter

replacements coupled with routine cleaning/deliming is required.

- 2 ea Model CB30K-SYSTEM Single Hollow Carbon Filter System, with 30,000 gallon capacity, for chlorine and chloramine reduction, sediment, bad tastes & odors, total organic compounds, tannins & trihalomethanes, ANSI/NSF 42 & 53
- 2 ea Opted out of Reverse Osmosis System
- 1 ea Model STACK-ABC/G Stacking Kit, gas, for (2) ABC7G Combi, includes: vent kit, spray hose, drip tray & casters
- 1 ea Model SPRAY-ABC Spray Hose Kit, Provided with ABC Stand or ABC Stacking Kits - includes spray handle, 8 ft. stainless steel braided hose and mounting hardware

ELECTRICAL

	VOLTS	CYCLE	PHASE	CONN	AFF	NEMA	AMPS	KW	HP	MCA	MOCP
1	120	60	1	Cord & Plug		5-15P					

GAS

	SIZE	MBTU	KW	CONN
1	3/4"	80.0		

STEAM

	INLET SIZE	RETURN SIZE	LB/HR	PSIG (MIN)	PSIG (MAX)
1					

WATER

	HOT SIZE	HOT AFF	HOT GPH	COLD SIZE	COLD AFF	FILTERED SIZE	FILTERED AFF	CONDENSER INLET SIZE	CONDENSER OUTLET SIZE
1				3/4"		3/4"			

WASTE

	INDIRECT SIZE	DIRECT SIZE
1	1"	

ITEM 31 - HD RANGE, 36", 6 OPEN BURNERS (1 REQ'D)

Vulcan Model V6B36S Dimensions: 36(h) x 36(w) x 36.75(d)

V Series Heavy Duty Range, gas, 36", (6) 35,000 BTU open burners, cast iron grates, standard oven, stainless steel front, front top ledge, sides, base, burner box & stub back, 6" adjustable legs, 260,000 BTU, CSA, NSF

- 1 ea 1 year limited parts & labor warranty, standard
- 1 ea Natural gas (add -1 suffix) (specify elevation if over 2,000 ft.)
- 1 ea Model PRREGN-001 1" NPT pressure regulator with reducer (Natural gas)
- 1 ea 1-1/4" rear gas connection, standard
- 1 ea Rear gas connection: cap and cover, both ends
- 1 st Model CASTERS RR4 Casters, 5", Set of 4, 2 with Locks



GAS

	SIZE	MBTU	KW	CONN
1		260.0		
2	1-1/4"			

STEAM

	INLET SIZE	RETURN SIZE	LB/HR	PSIG (MIN)	PSIG (MAX)
1					
2					

ITEM 32 - TILTING SKILLET BRAISING PAN, GAS (1 REQ'D)

Vulcan Model VG40 Dimensions: 40.5(h) x 46(w) x 35.5(d)

Braising Pan, Gas, 40-gallon capacity, 46" wide open base, manual tilt, 9" deep stainless steel pan with gallon markings, pouring lip & removable strainer, spring assist cover with drip edge, pan holder, solid state control, includes L faucet bracket, electric ignition, 12" stainless steel legs with adjustable flanged feet, 120,000 BTU, CSA Flame, CSA Star, UL EPH Classified

- 1 ea 1 year limited parts & labor warranty, standard
- 1 ea Gas type to be specified
- 1 ea 120v/60/1-ph, 9.0 amps, cord & plug, standard
- 1 ea Model DBLTS 12NZL DOUBLE Pantry Deck-Mount Faucet, 12" swivel spout, includes 4" and 12" riser, NSF and Lead Reduction Compliant
- 1 ea Model STRAINR-BPPOUR Pouring Lip Strainer, for braising pan



ELECTRICAL

	VOLTS	CYCLE	PHASE	CONN	AFF	NEMA	AMPS	KW	HP	MCA	MOCP
1	120	60	1	Cord & Plug			9.0				

GAS

	SIZE	MBTU	KW	CONN
1	3/4"	120.0		

STEAM

	INLET SIZE	RETURN SIZE	LB/HR	PSIG (MIN)	PSIG (MAX)
1					

ITEM 35 - FOOD SLICER, ELECTRIC (1 REQ'D)**Hobart Model HS7-1 Dimensions: 27.25(h) x 24.63(w) x 30.31(d)**

Heavy Duty Meat Slicer, automatic, 13" CleanCut™ removable knife with removal tool, burnished finish, (3) stroke lengths, & (4) stroke speeds, removable meat grip assembly, removable ring guard cover, product fence, single action top mounted sharpener with Borazon™ stones, manual lift lever, 1/2 hp motor, 5.6amps, 120v/60hz/1-ph, NSF cETLus



- 1 ea Standard warranty - 1-Year parts, labor & travel time during normal working hours within the USA
 - 1 ea Model HS-CHUTE Food chute for HS series slicers
 - 1 ea Model HS-FENFUL Product fence for HS series slicers
- * Stand by others.

ELECTRICAL

	VOLTS	CYCLE	PHASE	CONN	AFF	NEMA	AMPS	KW	HP	MCA	MOCP
1	120	60	1	Cord & Plug			5.6		1/2		

ITEM 36 - PLANETARY MIXER (1 REQ'D)**Hobart Model HL200-1STD**

100-120/50/60/1; Bench type mixer; with bowl, beater, whip & spiral dough arm, US/EXP configuration - Legacy Planetary Mixer, Bench, 20 quart, (3) fixed speeds plus stir speed, gear-driven transmission, 15-minute SmartTimer™, #12 taper hub, manual bowl lift, stainless steel bowl, aluminum "B" beater, stainless steel "D" wire whip, aluminum "ED" spiral dough arm, stainless steel bowl guard, 1/2 hp, cord with plug



- 1 ea Standard warranty - 1-Year parts, labor & travel time during normal working hours within the USA
- 1 ea Model TABLEHW-HL2012 Mixer Table; 27"W x 32"D x 26"H, the top shelf is drilled for mounting an HL120 or HL200 mixer, includes 4 posts for storing attachments, a lower shelf for additional storage, & (4) locking 5" diameter wheels

ELECTRICAL

	VOLTS	CYCLE	PHASE	CONN	AFF	NEMA	AMPS	KW	HP	MCA	MOCP
1				Cord & Plug					1/2		

ITEM 37 - PLANETARY MIXER (1 REQ'D)**Hobart Model HL600-1STD**

200-240/50/60/3/1 Mixer; with bowl, beater, "D" whip, & spiral dough arm; US/EXP configuration - Legacy Planetary Mixer, 2.7 HP, 60 quart, (4) fixed speeds, gear-driven transmission, 20-Minute SmartTimer™, #12 attach hub, power bowl lift, stainless steel bowl, stainless steel bowl guard, "B" beater, "D" wire whip, "ED" dough hook



- 1 ea Standard warranty: 1-Year parts, labor & travel time during normal working hours within the USA
- 1 ea Model TRUCK-HL1486 Legacy® Mixer Bowl Truck, aluminum, for use with 60, 80 & 140 quart

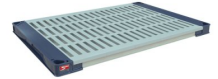
mixers

ELECTRICAL

	VOLTS	CYCLE	PHASE	CONN	AFF	NEMA	AMPS	KW	HP	MCA	MOCP
1				Direct							

ITEM 41 - PLASTIC SHELVING (5 REQ'D)**Metro Model MAX4-2448G Dimensions: 48(w) x 24(d)**

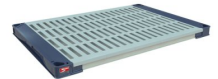
MetroMax® 4 Shelf, 48"W x 24"D, with removable polypropylene open grid mats & (4) wedge connectors, built in Microban® antimicrobial product protection, 800 lb. capacity per shelf, NSF



- 10 ea Model MAX4-2460F MetroMax® 4 Shelf, 60"W x 24"D, with removable polypropylene solid mats & (4) wedge connectors, built in Microban® antimicrobial product protection, 600 lb. capacity per shelf, NSF
- 12 ea Model MX86P Polymer trilobal post (compatible with MetroMax® i, MetroMax® 4, MetroMax® Q), 86-3/16"H, for stationary use or with a dolly, adjustable leveling foot, grooved on 1" increments, corrosion proof all polymer construction with built in Microban® antimicrobial product protection
(3) units- 5 tiers high.

ITEM 43 - PLASTIC SHELVING (10 REQ'D)**Metro Model MAX4-2454G Dimensions: 54(w) x 24(d)**

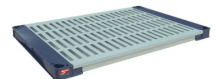
MetroMax® 4 Shelf, 54"W x 24"D, with removable polypropylene open grid mats & (4) wedge connectors, built in Microban® antimicrobial product protection, 600 lb. capacity per shelf, NSF



- 20 ea Model MAX4-2460G MetroMax® 4 Shelf, 60"W x 24"D, with removable polypropylene open grid mats & (4) wedge connectors, built in Microban® antimicrobial product protection, 600 lb. capacity per shelf, NSF
- 24 ea Model MX74P Polymer trilobal post (compatible with MetroMax® i, MetroMax® 4, MetroMax® Q), 74-3/16"H, for stationary use or with a dolly, adjustable leveling foot, grooved on 1" increments, corrosion proof all polymer construction with built in Microban® antimicrobial product protection
(6) units- 5 tiers high.

ITEM 44 - PLASTIC SHELVING (8 REQ'D)**Metro Model MAX4-2436G Dimensions: 36(w) x 24(d)**

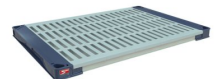
MetroMax® 4 Shelf, 36"W x 24"D, with removable polypropylene open grid mats & (4) wedge connectors, built in Microban® antimicrobial product protection, 800 lb. capacity per shelf, NSF



- 8 ea Model MAX4-2448G MetroMax® 4 Shelf, 48"W x 24"D, with removable polypropylene open grid mats & (4) wedge connectors, built in Microban® antimicrobial product protection, 800 lb. capacity per shelf, NSF
- 16 ea Model MX74P Polymer trilobal post (compatible with MetroMax® i, MetroMax® 4, MetroMax® Q), 74-3/16"H, for stationary use or with a dolly, adjustable leveling foot, grooved on 1" increments, corrosion proof all polymer construction with built in Microban® antimicrobial product protection
(4) units- 4 tiers high.

ITEM 49 - PLASTIC SHELVING (5 REQ'D)**Metro Model MAX4-1836G Dimensions: 36(w) x 18(d)**

MetroMax® 4 Shelf, 36"W x 18"D, with removable polypropylene open grid mats & (4) wedge connectors, built in Microban® antimicrobial product protection, 800 lb. capacity per shelf, NSF

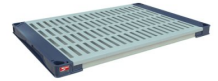


- 4 ea Model MX74P Polymer trilobal post (compatible with MetroMax® i, MetroMax® 4, MetroMax® Q), 74-3/16"H, for stationary use or with a dolly, adjustable leveling foot, grooved on 1" increments, corrosion proof all polymer construction with built in Microban® antimicrobial product protection
(1) unit - 5 tiers high.

ITEM 56 - PLASTIC SHELVING (10 REQ'D)**Metro Model MAX4-1848G Dimensions: 48(w) x 18(d)**

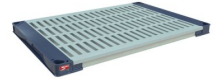
MetroMax® 4 Shelf, 48"W x 18"D, with removable polypropylene open grid mats & (4) wedge connectors, built in Microban® antimicrobial product protection, 800 lb. capacity per shelf, NSF

- 8 ea Model MX74P Polymer trilobal post (compatible with MetroMax® i, MetroMax® 4, MetroMax® Q), 74-3/16"H, for stationary use or with a dolly, adjustable leveling foot, grooved on 1" increments, corrosion proof all polymer construction with built in Microban® antimicrobial product protection
(2) units- 5 tiers high.

**ITEM 60 - PLASTIC SHELVING (5 REQ'D)****Metro Model MAX4-2436G Dimensions: 36(w) x 24(d)**

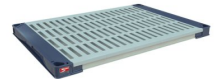
MetroMax® 4 Shelf, 36"W x 24"D, with removable polypropylene open grid mats & (4) wedge connectors, built in Microban® antimicrobial product protection, 800 lb. capacity per shelf, NSF

- 20 ea Model MAX4-2460G MetroMax® 4 Shelf, 60"W x 24"D, with removable polypropylene open grid mats & (4) wedge connectors, built in Microban® antimicrobial product protection, 600 lb. capacity per shelf, NSF
- 20 ea Model MX86P Polymer trilobal post (compatible with MetroMax® i, MetroMax® 4, MetroMax® Q), 86-3/16"H, for stationary use or with a dolly, adjustable leveling foot, grooved on 1" increments, corrosion proof all polymer construction with built in Microban® antimicrobial product protection
(5) units- 5 tiers high.

**ITEM 61 - PLASTIC SHELVING (10 REQ'D)****Metro Model MAX4-1848G Dimensions: 48(w) x 18(d)**

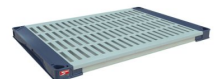
MetroMax® 4 Shelf, 48"W x 18"D, with removable polypropylene open grid mats & (4) wedge connectors, built in Microban® antimicrobial product protection, 800 lb. capacity per shelf, NSF

- 8 ea Model MX74P Polymer trilobal post (compatible with MetroMax® i, MetroMax® 4, MetroMax® Q), 74-3/16"H, for stationary use or with a dolly, adjustable leveling foot, grooved on 1" increments, corrosion proof all polymer construction with built in Microban® antimicrobial product protection
(2) units- 5 tiers high.

**ITEM 96 - PLASTIC SHELVING (1 REQ'D)****Metro Model MAX4-1860G Dimensions: 60(w) x 18(d)**

MetroMax® 4 Shelf, 60"W x 18"D, with removable polypropylene open grid mats & (4) wedge connectors, built in Microban® antimicrobial product protection, 600 lb. capacity per shelf, NSF

- 1 ea Model MX74P Polymer trilobal post (compatible with MetroMax® i, MetroMax® 4, MetroMax® Q), 74-3/16"H, for stationary use or with a dolly, adjustable leveling foot, grooved on 1" increments, corrosion proof all polymer construction with built in Microban® antimicrobial product protection
(2) units- 4 tiers high.

**ITEM 81 - PASS-THRU REFRIGERATOR (1 REQ'D)****Traulsen Model AHT132WPUT-FHS Dimensions: 83.25(h) x 29.88(w) x 37.94(d)**

Spec-Line Refrigerator, Pass-thru, one-section, self-contained refrigeration, StayClear™ Condenser, stainless steel exterior, aluminum interior, standard depth, wide full-height door or doors with Santoprene® EZ-Clean Gaskets, (3) adjustable wire shelves per section, microprocessor controls, 6" adjustable stainless steel legs, 1/3 HP, cULus, NSF

- 1 ea 115v/60/1-ph, 7.2 amps, with cord & NEMA 5-15P, standard
- 1 ea 3 year service/labor, 5 year compressor warranty, standard
- 1 ea Standard refrigerant, standard
- 1 ea Thermometer side door: hinged on right, standard



- 1 ea Rear door hinged on left
 1 ea Additional coated shelf on pins (max 9)

ELECTRICAL

	VOLTS	CYCLE	PHASE	CONN	AFF	NEMA	AMPS	KW	HP	MCA	MOCP
1									1/3		
2	115	60	1	Cord & Plug		5-15P	7.2				

ITEM 93 - DISPOSER (1 REQ'D)

InSinkErator Model SS-200-15A-MRS

SS-200™ Complete Disposer Package, with 15" diameter bowl, 6-5/8" diameter inlet, with removable splash baffle & reversible bowl cover, 2 HP motor, stainless steel construction, includes syphon breaker, solenoid valve, flow control valve, manual reverse switch, adjustable leg kit



- 1 ea (1) year parts & labor warranty from date of installation (standard)
 1 ea Standard height disposer body
 1 ea Voltage to be determined later
 1 ea Model SYPHON STD Syphon breaker standard, 1/2" (11477)

ELECTRICAL

	VOLTS	CYCLE	PHASE	CONN	AFF	NEMA	AMPS	KW	HP	MCA	MOCP
1									2		

WATER

	HOT SIZE	HOT AFF	HOT GPH	COLD SIZE	COLD AFF	FILTERED SIZE	FILTERED AFF	CONDENSER INLET SIZE	CONDENSER OUTLET SIZE
1				1/2"					

WASTE

	INDIRECT SIZE	DIRECT SIZE
1		2"

ITEM 95 - DISHWASHER, CONVEYOR TYPE (1 REQ'D)

Hobart Model CL44EN-ADV+BUILDUP Dimensions: 68.5(h) x 44.75(w) x 31.25(d)

Conveyor Dishwasher, Advansys model, single tank, (202) racks/hour, insulated hinged doors, .62 gallon/rack, stainless steel enclosure panels, microprocessor controls with low temperature & dirty water indicators, NSF Pot & Pan mode, programable de-lime notification, 30 kW stainless booster, energy recovery (DWER), automatic soil removal (ASR), drain water tempering kit, ENERGY STAR®, Free factory startup for installations within a 100 mile radius of a Hobart service office; installation beyond 100 miles will be charged at the quoted rate by the local Hobart service office



- 1 ea Oversized units with crated shipping dimensions greater or equal to 72" in length and/or 90" in height. If delivery is to a facility without a standard height dock, additional shipping charges will apply depending on the service requested. consult Factory.
 1 ea Standard warranty - 1-Year parts, labor & travel time during normal working hours within the USA
 1 ea Model CL44EN-ADVHTE15K Electric tank heat 15kW
 1 ea Model CL44EN-ADVERH30K 30kW electric booster
 1 ea Model CL44EN-ADVELE0AX 208v/60/3-ph
 1 ea Dual Point (2) service connection standard
 1 ea Model CL44EN-ADVHGTSTD Standard height
 1 ea Model CL44EN-ADVDIR0RL Right to left operation
 1 ea Model CL44EN-ADVFETSTD Standard feet
 1 ea NOTE: For water of 3-grains of hardness or more, Hobart suggests adding a water softener.
 1 ea Model CLE/TBL-SWITCH Table limit switch CLE-Series

ELECTRICAL

	VOLTS	CYCLE	PHASE	CONN	AFF	NEMA	AMPS	KW	HP	MCA	MOCP
1								15			
2								30			
3	208	60	3								

ELECTRICAL 2 REMARKS

booster requires separate electrical connection

WATER

	HOT SIZE	HOT AFF	HOT GPH	COLD SIZE	COLD AFF	FILTERED SIZE	FILTERED AFF	CONDENSER INLET SIZE	CONDENSER OUTLET SIZE
1	1/2"			1/2"					

WASTE

	INDIRECT SIZE	DIRECT SIZE
1	2"	

PLUMBING 1 REMARKS

cold water connection for optional drain water tempering kit

ITEM 96 - UNLOADER (1 REQ'D)

AeroWerks Model TTU

Tite-Turn Unloader, R-L, Powered unloader, model Aerowerks TTUL-90°. Unit to be supported on 1-5/8" diameter stainless steel legs with adjustable bullet feet and all cross-rails fully welded to legs

1 ea Model FREIGHT Estimated Freight Charges