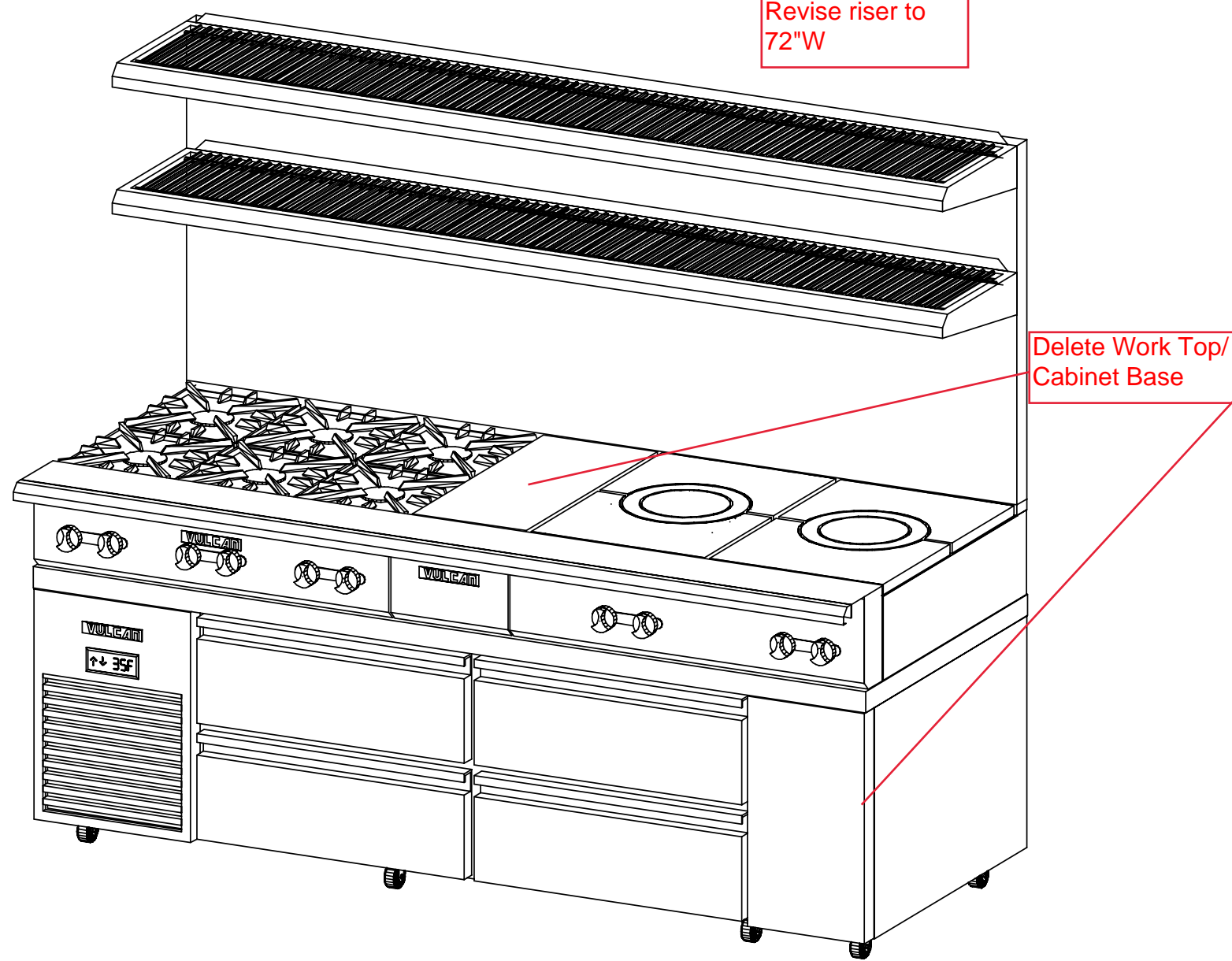
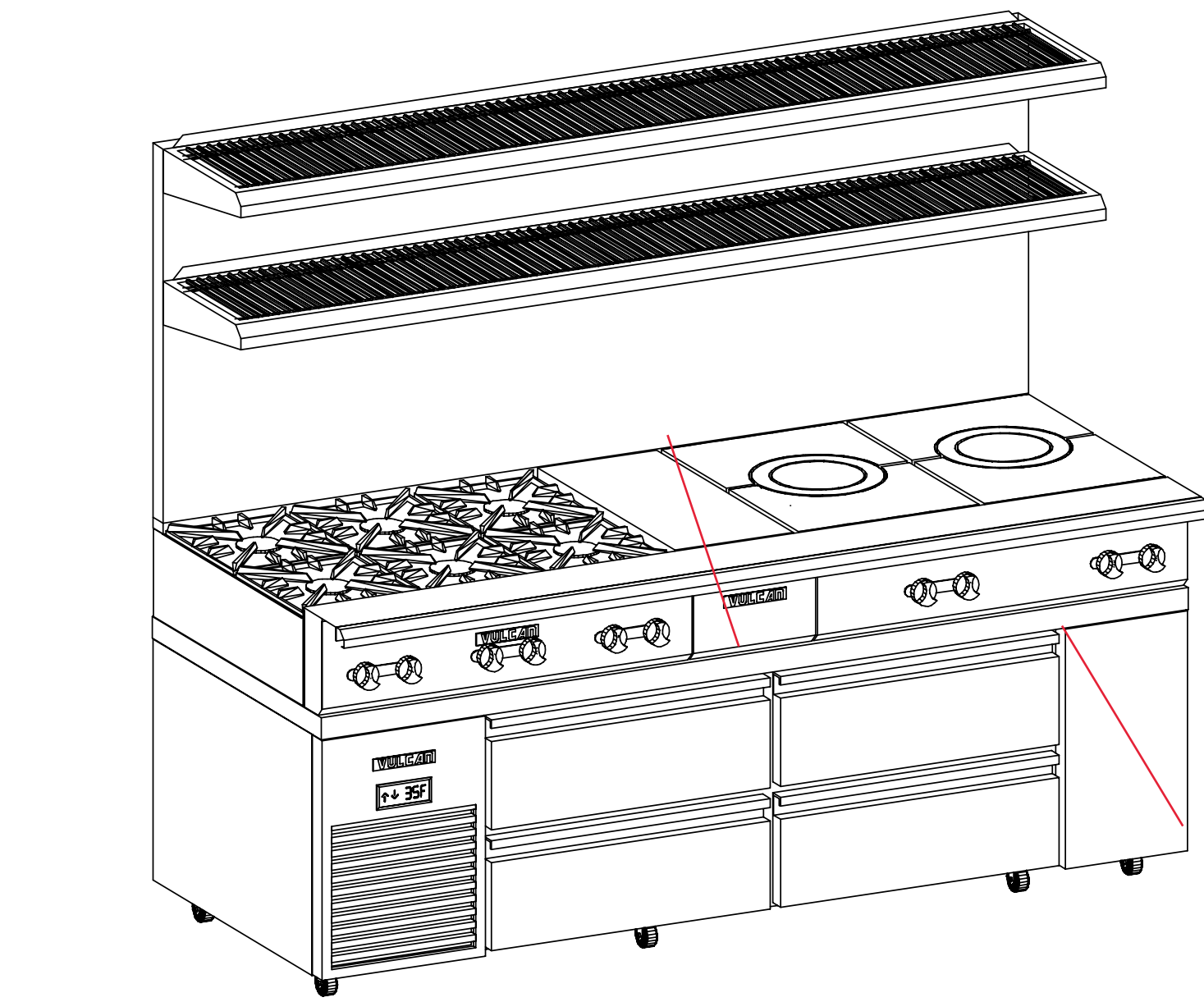


| | | | |
|-----|------|-----------|-------------------|
| 148 | 1 EA | V2FT36 | RANGE |
| 50 | MBTU | 1.25 | MANIFOLD |
| 149 | 1 EA | VSC72-MOD | REFRIGERATED BASE |
| 120 | (1) | 6.7A | 5-15 |
| 150 | 1 EA | VWT12B | SPREADER |
| 0 | MBTU | 1.25 | RS AFF |
| 152 | 1 EA | V6B36 | RANGE |
| 210 | MBTU | 1.25 | MANIFOLD |

GAS CONNECTION #1
LOCATED IN ITEM: 150
PIPE SIZE: 1.25 NPT
OP HEIGHT: 36" AFF
TOTAL GAS LOAD: 250 MBTU
INCLUDES ITEMS: 152 148
NOTE:



GENERAL NOTES - PLEASE READ

VENTILATION:
ALL COOKING EQUIPMENT MUST BE VENTILATED BY AN APPROVED APPLIANCE IN ACCORDANCE WITH ALL APPLICABLE CODES.

FIRE SUPPRESSION:
ALL COOKING EQUIPMENT MUST BE PROTECTED BY AN APPROVED FIRE SUPPRESSION SYSTEM IN ACCORDANCE WITH ALL APPLICABLE CODES.

CONNECTIONS:
ALL PIPING, FITTINGS, AND INTERCONNECTION SERVICES SHOWN ARE TO BE SUPPLIED AND INSTALLED BY LICENSED CONTRACTORS IN ACCORDANCE WITH ALL LOCAL CODES.

GAS CONNECTIONS:
EXTERNAL GAS REGULATORS, FLEXIBLE GAS LINES AND RESTRAINING CABLES PROVIDED WITH THE EQUIPMENT MUST BE INSTALLED BY LICENSED CONTRACTORS IN ACCORDANCE WITH ALL LOCAL CODES. INCOMING GAS MANIFOLD SUPPLY PRESSURE MUST NOT EXCEED 0.5 PSI (4" W.C.)

BY OTHERS:
VERIFY ALL EQUIPMENT LISTED AS BY OTHERS FOR SIZE AND MECHANICAL SERVICE REQUIREMENTS.

NOTE:
IN LINE WITH THE POLICY TO CONTINUALLY IMPROVE ITS PRODUCTS, THE MANUFACTURES RESERVE THE RIGHT TO CHANGE MATERIALS AND SPECIFICATIONS WITHOUT NOTICE.

| |
|-------------------|
| CONNECTION POINT |
| COLD WATER |
| HOT WATER |
| HOT + COLD WATER |
| DRAIN |
| POWER |
| SWITCH |
| CORD SET |
| CONV. OUTLET RECP |
| DUPLEX RECP/TABLE |
| SINGLE RECP/TABLE |
| GAS |
| STEAM SUPPLY |
| STEAM RETURN |
| STEAM TAKE OFF |
| EXHAUST VENT |
| SUPPLY VENT |
| REFRIGERATION |

01-20-2022
01-20-2022 : 08:41:59a

PROJECT CODE
MAVB1

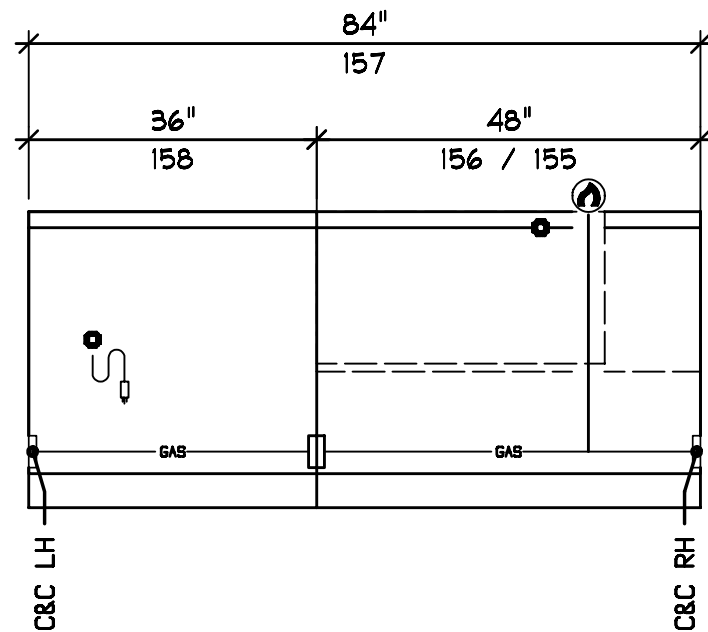
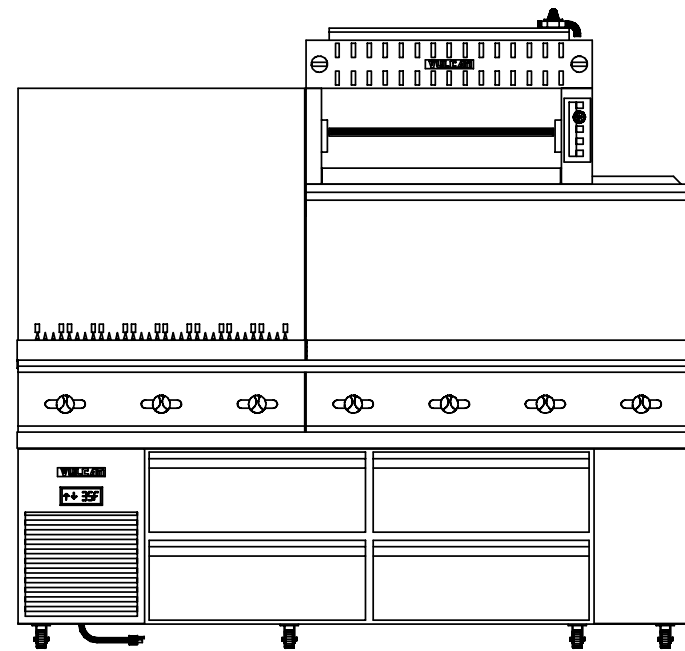
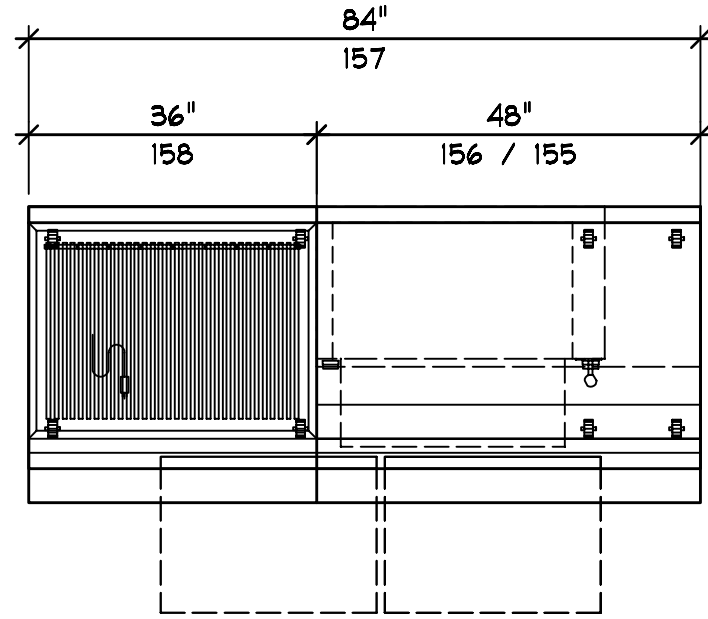
VULCAN
THE VULCAN HART COMPANY
BALTIMORE, MARYLAND
410-284-0660

20 MASS AVE
BATTERY 1

| No. | Date | By | Revision |
|-----|------------|-----|----------|
| 02 | 02/20/2022 | ddb | ITEM 149 |
| 04 | 06/07/2022 | ddb | |

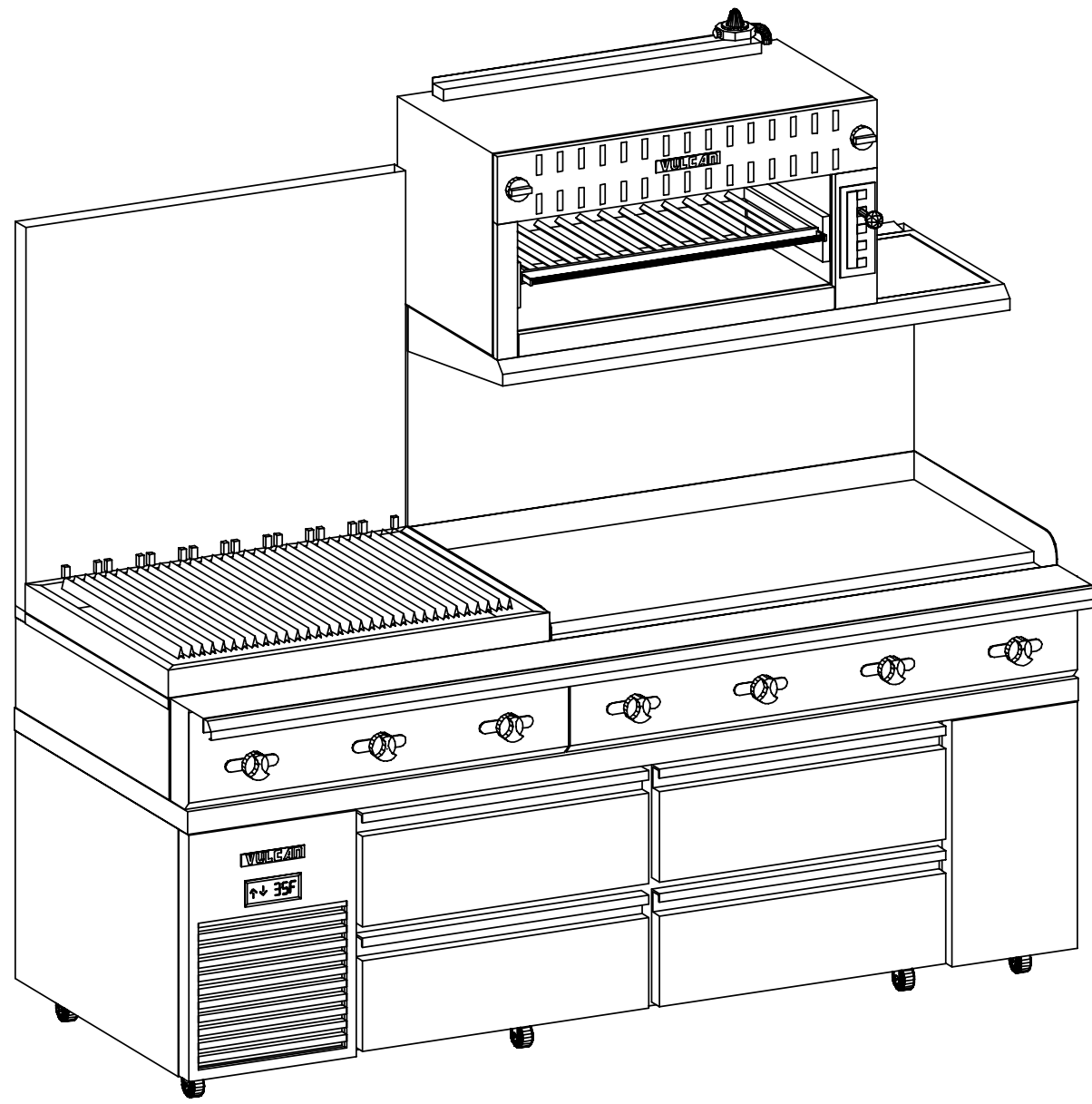
NEXT STEP DESIGN
913 WEST ST.
ANNAPOLIS, MD 21401

SCALE:
AS NOTED
DATE: 01/20/2022
DRAWN BY: DDB
VH-MAVB1

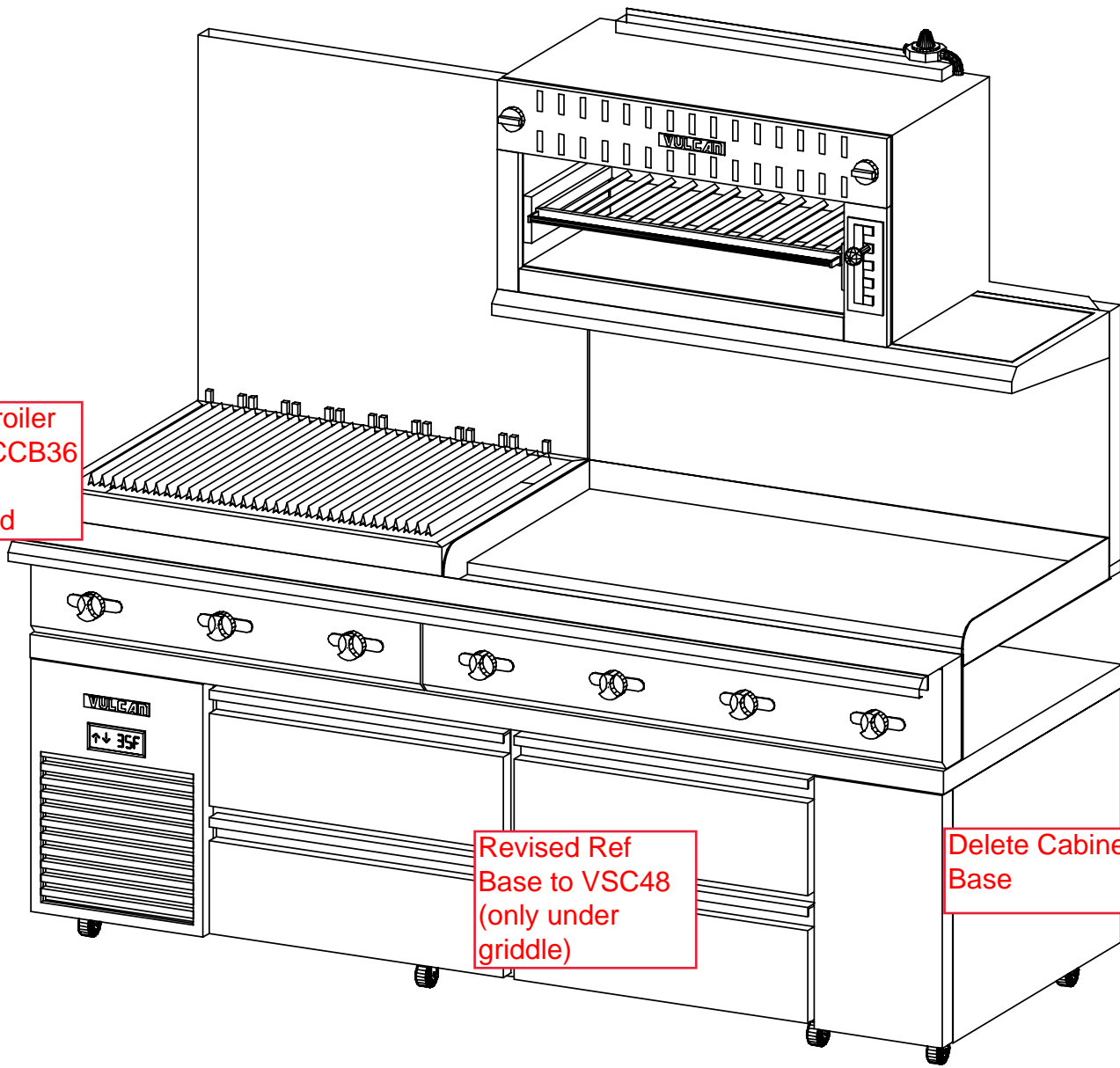


| | | | | |
|-----|----------|-----------|-------------------|-------|
| 155 | 1 EA | 361RB | SALAMANDER | V48XX |
| Ⓐ | 30 MBTU | 0.75 | INTERPLUMB | |
| 156 | 1 EA | TGRD48 | GRIDDLE | |
| Ⓐ | 120 MBTU | 1.25 | 32 AFF | |
| 157 | 1 EA | VSC72-MOD | REFRIGERATED BASE | |
| Ⓐ | 120 (1) | 6.7A | 5-15 | |
| 158 | 1 EA | VCCB36 | CHRA BROILER | |
| Ⓐ | 99 MBTU | 1.25 | MANIFOLD | |

GAS CONNECTION #1:
LOCATED IN ITEM# 156
PIPE SIZE: 1.25 NPT
CP HEIGHT: 32" AFF
TOTAL GAS LOAD: 285 MBTU
INCLUDES ITEMS: 158 156 155
NOTE:



Revise charbroiler
to model # VCCB36
on SMOKER-
VCCB36 stand



GENERAL NOTES - PLEASE READ

VENTILATION:
ALL COOKING EQUIPMENT MUST BE VENTILATED BY AN APPROVED APPLIANCE IN ACCORDANCE WITH ALL APPLICABLE CODES.

FIRE SUPPRESSION:
ALL COOKING EQUIPMENT MUST BE PROTECTED BY AN APPROVED FIRE SUPPRESSION SYSTEM IN ACCORDANCE WITH ALL APPLICABLE CODES.

CONNECTIONS:
ALL PIPING, FITTINGS, AND INTERCONNECTION SERVICES SHOWN ARE TO BE SUPPLIED AND INSTALLED BY LICENSED CONTRACTORS IN ACCORDANCE WITH ALL LOCAL CODES.

GAS CONNECTIONS:
EXTERNAL GAS REGULATORS, FLEXIBLE GAS LINES AND RESTRAINING CABLES PROVIDED WITH THE EQUIPMENT MUST BE INSTALLED BY LICENSED CONTRACTORS IN ACCORDANCE WITH ALL LOCAL CODES. INCOMING GAS MANIFOLD SUPPLY PRESSURE MUST NOT EXCEED 0.5 PSI (4" W.C.)

BY OTHERS:
VERIFY ALL EQUIPMENT LISTED AS BY OTHERS FOR SIZE AND MECHANICAL SERVICE REQUIREMENTS.

NOTE:
IN LINE WITH THE POLICY TO CONTINUALLY IMPROVE ITS PRODUCTS, THE MANUFACTURERS RESERVE THE RIGHT TO CHANGE MATERIALS AND SPECIFICATIONS WITHOUT NOTICE.

| | |
|----|-------------------|
| ⊕ | CONNECTION POINT |
| Ⓒ | COLD WATER |
| Ⓗ | HOT WATER |
| ⒽⒸ | HOT + COLD WATER |
| Ⓓ | DRAIN |
| Ⓕ | POWER |
| Ⓖ | SWITCH |
| ⒸⒶ | CORD SET |
| ⒸⒶ | CONV OUTLET RECP |
| ⒸⒶ | DUPLEX RECP/TADLE |
| ⒸⒶ | SINGLE RECP/TADLE |
| ⒸⒶ | GAS |
| ⒸⒶ | STEAM SUPPLY |
| ⒸⒶ | STEAM RETURN |
| ⒸⒶ | STEAM TAKE OFF |
| ⒸⒶ | EXHAUST VENT |
| ⒸⒶ | SUPPLY VENT |
| ⒸⒶ | REFRIGERATION |

PROJECT CODE

20 MASS AVE
BATTERY 2

| No. | Date | By | Revision |
|-----|------------|-----|----------|
| 1 | 02/20/2022 | ddb | ITEM 157 |
| 3 | 06/07/2022 | ddb | |

NEXT STEP DESIGN
913 WEST ST.
ANNAPOLIS, MD 21401

SCALE:
AS NOTED
DATE: 02.20/2022
DRAWN BY: DDB
VH-MAVB2