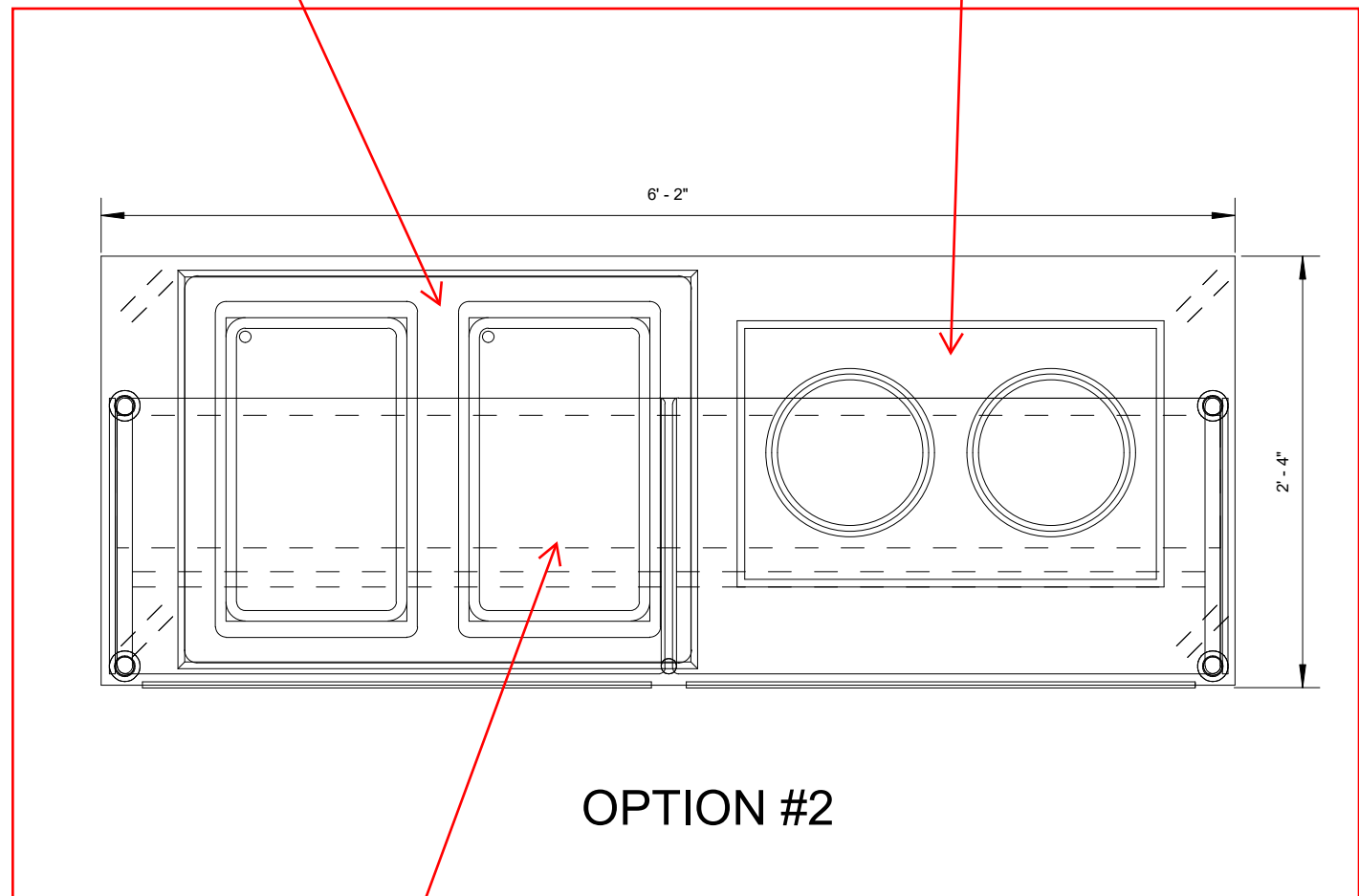


OPTION #1

2 WELL HOT COLD CONVERTIBLE

DUAL INDUCTION HUB



OPTION #2

HFE Festival Carts



SHEET TITLE:
CART LAYOUTS

| # | DATE | DESCRIPTION |
|---|------|-------------|
| | | |

DRAWN BY: A.Barshinger, CFSP
CHECKED BY: Z.Roda, CFSP
DATE: 6.6.2022

SCHEMATIC

SHEET NUMBER:

QF-1.1

**NOT FOR
CONSTRUCTION**



HFE Festival Carts



SHEET TITLE:
RENDERING

| # | DATE | DESCRIPTION |
|---|------|-------------|
| | | |

DRAWN BY: A.Barshinger, CFSP
CHECKED BY: Z.Roda, CFSP
DATE: 6.6.2022

SCHEMATIC
SHEET NUMBER:
QF-2.1

**NOT FOR
CONSTRUCTION**



HFE Festival Carts



SHEET TITLE:
RENDERING

| # | DATE | DESCRIPTION |
|---|------|-------------|
| | | |

DRAWN BY: A.Barshinger, CFSP
CHECKED BY: Z.Roda, CFSP
DATE: 6.6.2022

SCHEMATIC
SHEET NUMBER:
QF-2.2

**NOT FOR
CONSTRUCTION**