

AREA FOR CITY APPROVAL STAMP

FOR
REFERENCE

Contractor shall be responsible for reviewing all Plans and Specifications, verifying all existing conditions prior to proceeding with Construction, complying with all applicable building codes, and notifying Architect immediately of any discrepancies or conflicts. Contractor shall construct the work in conformance with all applicable building codes.

Contractor is responsible for design and installation of properly sized and loaded systems. Submit shop drawings to architect for approval on conformity to the design intent.

A written Specification was issued for this project and along with these printed documents constitute the Contract Documents for this project. Work scope pertinent to all disciplines occurs throughout the Contract Documents. By submitting a bid for this work the Contractor and all subcontractors attest that they have reviewed the entire contract document set and site conditions and have included all applicable work. Additional Specification notes are available upon request.

FIDELITY

1600 East 6th Street, Cleveland, OH

ISSUANCES

DATE	ISSUED FOR
1 09/27/21	Schematic Design #1
2 11/09/21	Schematic Design #2
3 11/19/21	100% Schematic Design
4 01/10/22	100% Schematic Design - Revised
5 01/17/22	50% Design Development

engineer's stamp

consultant logo

PROJ. # ~
SCALE: 1/4" = 1'-0"

FOODSERVICE
EQUIPMENT FLOOR PLAN,
BASEMENT LEVEL

FS 101-EQ

K.E.C. NOTES

- REFER TO ARCHITECTURAL DRAWINGS FOR FINISH SCHEDULE AND MILLWORK DETAILS.
- FOODSERVICE EQUIPMENT WILL BE SUPPLIED BY THE KITCHEN EQUIPMENT CONTRACTOR (K.E.C.), EXCEPT AS NOTED.
- THE KITCHEN EQUIPMENT CONTRACTOR (K.E.C.) WILL BE RESPONSIBLE FOR THE RECEIVING, STORAGE, DELIVERY TO SITE, UN-CRATING, ASSEMBLY, SETTING IN PLACE, LEVELING, AND SEALING OF ALL EQUIPMENT THAT THEY SUPPLY.
- ALL ROUGH-INS AND FINAL CONNECTIONS BY GENERAL CONTRACTOR, EXCEPT WHERE NOTED.
- K.E.C. TO FIELD VERIFY ALL ROUGH-INS AND CRITICAL DIMENSIONS; COORDINATE WITH GENERAL CONTRACTOR.
- K.E.C. TO HANG & INSTALL ALL WALL MOUNTED SHELVEING, USE STAINLESS STEEL TRUSS HEAD HARDWARE ONLY.
- K.E.C. TO PROVIDE MINIMUM 1 YEAR PARTS AND SERVICE WARRANTY FOR REFRIGERATION, COOKING, AND MECHANICAL EQUIPMENT.
- K.E.C. TO HANG EXHAUST HOODS ONLY, AND PROVIDE ANY PERMITS REQUIRED.
- K.E.C. TO PROVIDE FULLY OPERATIONAL FIRE SYSTEM AND OBTAIN ALL APPROVALS.
- K.E.C. TO PROVIDE FINAL START-UP OF ALL REFRIGERATION, RUN REQUIRED REFRIGERANT LINES AND HANG COILED.
- K.E.C. REFRIGERATION CONTRACTOR IS RESPONSIBLE FOR ALL PERMITS RELATED TO WALK-IN COOLERS & REFRIGERATION SYSTEMS AS REQUIRED BY LOCAL JURISDICTION.
- K.E.C. TO PROVIDE ALL GAS PRESSURE REGULATORS FOR EQUIPMENT REQUIRED BY MANUFACTURER. COORDINATE ALL INSTALLATIONS W/ PLUMBING CONTRACTOR AS PER LOCAL CODES.
- K.E.C. - FOR COMPLETE SPECIFICATIONS AND MODEL NUMBERS, THESE PLANS MUST BE BID WITH FOODSERVICE SPECIFICATIONS BOOK.

G.C. NOTES

- GENERAL CONTRACTOR TO COORDINATE W/ K.E.C. ON ALL MILLWORK, CRITICAL DIMENSIONS, DELIVERY OF EQUIPMENT & TIME SCHEDULE.
- GENERAL CONTRACTOR WILL REINFORCE ALL WALLS BEHIND WALL-MOUNTED EQUIPMENT. (SEE SPECIAL CONDITIONS PLAN)
- PLUMBER WILL COMPLETELY INSTALL ALL HAND SINKS, FLOOR TROUGHS, DISPOSERS, & FAUCETS (AS PROVIDED BY THE K.E.C.)
- REFER TO ARCHITECTURAL DRAWINGS FOR FINISH SCHEDULE AND MILLWORK DETAILS.
- ALL ROUGH-INS AND FINAL CONNECTIONS WILL BE DONE BY GENERAL CONTRACTOR, EXCEPT WHERE NOTED.
- GENERAL CONTRACTOR TO PREVIEW SPECIAL CONDITIONS PLANS, SHEET SERIES (FS 401-SC) FOR ADDITIONAL G.C. RELATED SCOPE OF WORK SUCH AS BUT NOT LIMITED TO: BEER/SODA CONDUITS, WALL BACKINGS, SLAB WORK, FINISHES & MILLWORK CUT-OUTS.
- GENERAL CONTRACTOR TO READ ALL NOTES AND REVIEW ALL FOODSERVICE PLANS FOR COMPLETE SCOPE OF WORK.

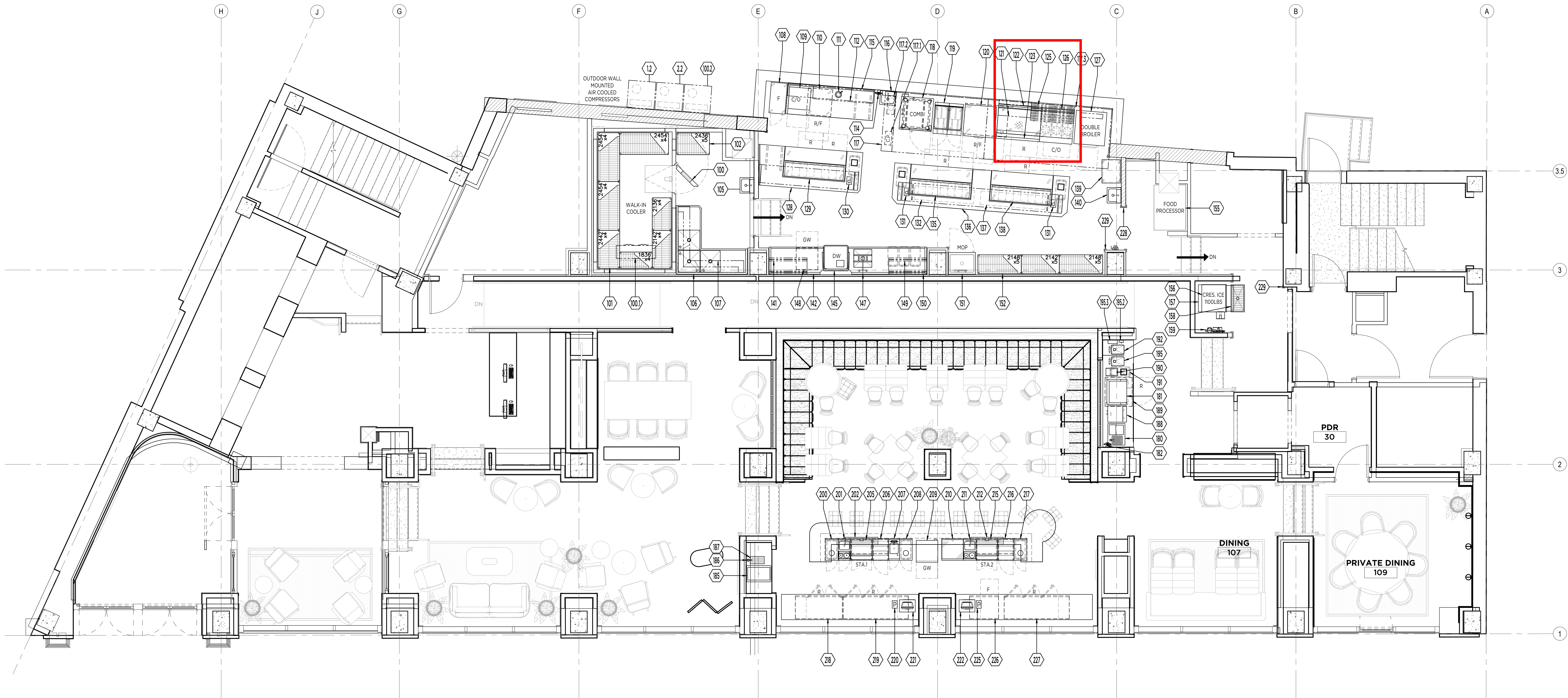
BASEMENT - KITCHEN & EMPLOYEE DINING

1/4" = 1'-0"

EQUIPMENT FLOOR PLAN

COPYRIGHTS

UNAUTHORIZED USE OF THE FOODSERVICE DESIGN, DETAILS, AUTOCAD BLOCKS, REVIT FAMILIES, AND SPECIFICATIONS CONTAINED IN THESE DOCUMENTS IS STRICTLY PROHIBITED. NSD INC. MAINTAINS OWNERSHIP OF SAME. THIS PROHIBITION EXTENDS FROM PRINTED MATERIAL TO ANY ELECTRONIC VERSIONS OF THE SAME. NO USE OTHER THAN THAT FOR WHICH IT IS INTENDED. IS STRICTLY PROHIBITED WITHOUT WRITTEN PERMISSION FROM NEXT STEP DESIGN, INC. ALL RIGHTS RESERVED.



AREA FOR CITY APPROVAL STAMP

FOR
REFERENCE

Contractor shall be responsible for reviewing all Plans and Specifications, verifying all existing conditions prior to proceeding with Construction, complying with all applicable building codes, and notifying Architect immediately of any discrepancies or conflicts. Contractor shall construct the work in conformance with all applicable building codes.

Contractor is responsible for design and installation of properly sized and loaded systems. Submit shop drawings to architect for approval on conformity to the design intent.

A written Specification was issued for this project and along with these printed documents constitute the Contract Documents for this project. Work scope pertinent to all disciplines occurs throughout the Contract Documents. By submitting a bid for this work the Contractor and all subcontractors attest that they have reviewed the entire contract document set and site conditions and have included all applicable work. Additional Specification notes are available upon request.

FIDELITY

1600 East 6th Street, Cleveland, OH

ISSUANCES

DATE	ISSUED FOR
1 09/27/21	Schematic Design #1
2 11/09/21	Schematic Design #2
3 11/19/21	100% Schematic Design
4 01/10/22	100% Schematic Design - Revised
5 01/17/22	50% Design Development

engineer's stamp

consultant logo

PROJ. # ~
SCALE: 1/4" = 1'-0"

FOODSERVICE
EQUIPMENT FLOOR PLAN,
LEVEL 1

FS 102-EQ

1ST FLOOR - KITCHEN
1/4" = 1'-0"

EQUIPMENT FLOOR PLAN

COPYRIGHTS
UNAUTHORIZED USE OF THE FOODSERVICE DESIGN, DETAILS, AUTOCAD BLOCKS, REVIT FAMILIES, AND SPECIFICATIONS CONTAINED IN THESE DOCUMENTS IS STRICTLY PROHIBITED. NSD INC. MAINTAINS OWNERSHIP OF SAME. THIS PROHIBITION EXTENDS FROM PRINTED MATERIAL TO ANY ELECTRONIC VERSIONS OF THE SAME. NO USE OTHER THAN THAT FOR WHICH IT IS INTENDED. IS STRICTLY PROHIBITED WITHOUT WRITTEN PERMISSION FROM NEXT STEP DESIGN, INC. ALL RIGHTS RESERVED.

EQUIPMENT SCHEDULE

PR	ITEM	QTY	SOURCE	DESCRIPTION
	1	1	BALLY	WALK-IN COOLER
	11	1	BALLY	EVAPORATOR COIL
	12	1	BALLY	REMOTE CONDENSING UNIT, AIR COOLED
	2	1	BALLY	WALK-IN FREEZER
	21	1	BALLY	EVAPORATOR COIL
	22	1	BALLY	REMOTE CONDENSING UNIT, AIR COOLED
	3	1	SPARE NUMBER	
	4	1	SPARE NUMBER	
	5	1	CAMBRO	WALK-IN SHELVING (LOT)
	6	1	CAMBRO	WALK-IN SHELVING (LOT)
	7	1	CAMBRO	WALK-IN SHELVING (LOT)
	8	1	FABRICATOR	THREE COMPARTMENT POT SINK
	8.1	2	T&S BRASS	FAUCET WALL / SPLASH MOUNT
	9	1	FABRICATOR	WALL SHELF W/ POT RACK
	10	1	IMC TEDDY	MOP SINK CABINET
	11	1	SPARE NUMBER	SPARE NUMBER
	12	1	SPARE NUMBER	SPARE NUMBER
	13	1	SPARE NUMBER	SPARE NUMBER
	14	1	SPARE NUMBER	SPARE NUMBER
	15	1	HOBART	MIXER PLANETARY
	15.1	1	FABRICATOR	ACCESSORY RACK
	16	1	HOBART	MIXER PLANETARY
	17	1	FABRICATOR	DOUBLE WALL SHELF
	18	1	FABRICATOR	PREP TABLE
	19	1	SCOTSMAN	ICE MAKER, UNDERCOUNTER
	20	1	BIZERBA	FOOD SLICER, ELECTRIC
	21	1	ADVANCE TABCO	HAND SINK WITH TOWEL AND SOAP DISPENSER
	22	1	EVERPURE	WATER FILTER ASSEMBLY
	23	1	SPARE NUMBER	SPARE NUMBER
	24	1	SPARE NUMBER	SPARE NUMBER
	25	1	ALTO-SHAAM	COMBI OVEN, ELECTRIC
	25.1	1	DORMONT	WATER CONNECTOR
	26	1	IMC TEDDY	FLOOR TROUGH, ANTI-SPLASH
	27	1	CLEVELAND	TILTING SKILLET, GAS
	28	1	JADE	RANGE, GAS, HEAVY DUTY, 36"
	28.1	1	DORMONT	GAS CONNECTOR KIT
	29	1	JADE	RANGE, 24" HEAVY DUTY, GAS
	30	1	JADE	HD RANGE, 36" 6 OPEN BURNERS
	31	1	STREIVOR	EXHAUST HOOD
	31.1	1	STREIVOR	HOOD CONTROL, PANEL
	31.2	1	ANSUL	FIRE SUPPRESSION SYSTEM
	31.3	2	FABRICATOR	S/S WALL PANELS (LOT)
	32	1	AMERICAN PANEL	BLAST CHILLER FREEZER, UNDERCOUNTER
	33	1	SPARE NUMBER	SPARE NUMBER
	34	1	SPARE NUMBER	SPARE NUMBER
	35	1	FABRICATOR	DOUBLE WALL SHELF
	36	1	FABRICATOR	PREP TABLE W/ SINK
	36.1	1	T&S BRASS	FAUCET, WALL / SPLASH MOUNT
	37	2	FABRICATOR	WORK TABLE, MOBILE
	38	1	SPARE NUMBER	SPARE NUMBER
	39	2	CAMBRO	DOLLY, DISHWASHER RACK
	40	1	ACP	MICROWAVE OVEN
	41	1	FABRICATOR	EQUIPMENT SHELF
	42	1	EQUIPEX	TOASTER OVEN BROILER, COUNTERTOP
	43	1	SPARE NUMBER	SPARE NUMBER
	44	1	SPARE NUMBER	SPARE NUMBER
	45	1	FABRICATOR	PREP TABLE
	45.1	1	T&S BRASS	FAUCET, DECK MOUNT
	45.2	1	RUBBERMAID	TRASH CAN
(VEND)	46	1	FETCO	COFFEE BREWER
	47	1	EVERPURE	WATER FILTER ASSEMBLY
	48	1	FOLLETT	ICE MACHINE, DISPENSER
	49	1	CONTINENTAL	REFRIGERATOR, REACH-IN
	50	1	FABRICATOR	TRASH COUNTER
	50.1	1	RUBBERMAID	TRASH CAN
	51	1	ADVANCE TABCO	HAND SINK WITH TOWEL AND SOAP DISPENSER
	52	1	METRO	CART / DOLLY, DISH
	53	1	SPARE NUMBER	SPARE NUMBER
	54	1	SPARE NUMBER	SPARE NUMBER
	55	1	DELFIELD	FLATWARE & TRAY CART
	56	1	DELFIELD	SERVING COUNTER, HOT FOOD, ELECTRIC
	57	1	DELFIELD	SERVING COUNTER, COLD FOOD
	58	1	DELFIELD	SERVING COUNTER, UTILITY
	59	1	FABRICATOR	S/S WALL CAP
	60	7	FABRICATOR	CORNER GUARDS
	100	1	BALLY	WALK-IN COOLER
	100.1	1	BALLY	EVAPORATOR COIL
	100.2	1	BALLY	REMOTE CONDENSING UNIT, AIR COOLED
	101	1	CAMBRO	WALK-IN SHELVING (LOT)
	102	1	CAMBRO	WALK-IN SHELVING (LOT)
	103	1	SPARE NUMBER	SPARE NUMBER
	104	1	SPARE NUMBER	SPARE NUMBER
	105	1	ADVANCE TABCO	HAND SINK WITH TOWEL AND SOAP DISPENSER
	106	1	FABRICATOR	THREE COMPARTMENT POT SINK
	106.1	2	T&S BRASS	FAUCET WALL / SPLASH MOUNT
	107	1	FABRICATOR	WALL SHELF W/ POT RACK
	108	1	CONTINENTAL	FREEZER, REACH-IN
	109	1	EQUIPEX	CONVECTION OVEN, ELECTRIC
	110	1	RANDELL	REFRIGERATOR FREEZER, CONVERTIBLE
	111	1	FISHER	DIPPERWELL
	112	1	FABRICATOR	DOUBLE WALL SHELF
	113	1	SPARE NUMBER	SPARE NUMBER
	114	1	EVERPURE	WATER FILTER ASSEMBLY
	115	1	FABRICATOR	PREP TABLE
	116	1	ADVANCE TABCO	HAND SINK WITH TOWEL AND SOAP DISPENSER
	117	1	STREIVOR	EXHAUST HOOD
	117.1	1	STREIVOR	HOOD CONTROL, PANEL
	117.2	1	ANSUL	FIRE SUPPRESSION SYSTEM
	117.3	1	FABRICATOR	S/S WALL PANELS (LOT)
	118	1	ALTO-SHAAM	COMBI OVEN, ELECTRIC
	118.1	1	DORMONT	WATER CONNECTOR
	119	1	PITCO	FRYER, GAS, FLOOR MODEL, FULL POT
	119.1	2	DORMONT	GAS CONNECTOR KIT
	120	1	RANDELL	REFRIGERATOR FREEZER, CONVERTIBLE
	121	1	JADE	CHEESEMELTER, GAS
	122	1	JADE	RANGE, 48" HEAVY DUTY, GAS
	122.1	1	DORMONT	GAS CONNECTOR KIT
	123	1	JADE	EQUIPMENT STAND REFRIGERATED BASE
	124	1	SPARE NUMBER	SPARE NUMBER
	125	1	ADVANCE TABCO	SHELF, WALL MOUNT
	126	1	JADE	RANGE W/CONVECTION OVEN, GAS
	127	1	SOUTHBEND	BROILER, DECK-TYPE, GAS
	128	1	FABRICATOR	CHEF UNIT
	128.1	1	RUBBERMAID	TRASH CAN
	129	1	RANDELL	REFRIGERATED COUNTER, PIZZA PREP TABLE
(OWN)	130	1	BY OWNER	POS - PRINTER
(OWN)	131	2	BY OWNER	POS - PRINTER
	132	1	HATCO	HEAT LAMP, STRIP TYPE
	133	1	SPARE NUMBER	SPARE NUMBER
	134	1	SPARE NUMBER	SPARE NUMBER
	135	1	RANDELL	REFRIGERATED COUNTER, PIZZA PREP TABLE
	136	1	FABRICATOR	CHEF UNIT
	137	1	HATCO	HEAT LAMP, STRIP TYPE
	138	1	RANDELL	REFRIGERATED COUNTER, PIZZA PREP TABLE
	139	1	NEW AGE	PAN RACK WITH WORK TOP, MOBILE
	140	1	ADVANCE TABCO	HAND SINK WITH TOWEL AND SOAP DISPENSER
	141	1	ADVANCE TABCO	DISHTABLE SORTING SHELF
	142	1	FABRICATOR	CLEAN DISH TABLE
	143	1	SPARE NUMBER	SPARE NUMBER
	144	1	SPARE NUMBER	SPARE NUMBER
	145	1	HOBART	DISHWASHER, DOOR TYPE, VENTLESS
	146	1	SPARE NUMBER	SPARE NUMBER

PR	ITEM	QTY	SOURCE	DESCRIPTION
	147	1	T&S BRASS	PRE-RINSE FAUCET ASSEMBLY
	148	1	HOBART	DISHWASHER, UNDERCOUNTER
	149	1	ADVANCE TABCO	DISHTABLE SORTING SHELF
	150	1	FABRICATOR	SOILED DISHTABLE
	150.1	3	RUBBERMAID	TRASH CAN
	151	1	IMC TEDDY	MOP SINK CABINET
	152	1	CAMBRO	WALK-IN SHELVING (LOT)
	153	1	SPARE NUMBER	SPARE NUMBER
	154	1	SPARE NUMBER	SPARE NUMBER
	155	1	ORCA	FOOD WASTE PROCESS MACHINE
	156	1	HOSHIZAKI	ICE MAKER, CUBE STYLE
	157	1	FOLLETT	ICE BIN FOR ICE MACHINES
	157.1	1	SAN JAMAR	ICE SCOOP HOLDER
	158	1	IMC TEDDY	FLOOR TROUGH
	159	1	EVERPURE	WATER FILTRATION SYSTEM
	160	1	SPARE NUMBER	SPARE NUMBER
	161	1	SPARE NUMBER	SPARE NUMBER
	162	1	SPARE NUMBER	SPARE NUMBER
	163	1	SPARE NUMBER	SPARE NUMBER
	164	1	SPARE NUMBER	SPARE NUMBER
	165	1	SPARE NUMBER	SPARE NUMBER
	166	1	SPARE NUMBER	SPARE NUMBER
	167	1	SPARE NUMBER	SPARE NUMBER
	168	1	SPARE NUMBER	SPARE NUMBER
	169	1	SPARE NUMBER	SPARE NUMBER
	170	1	SPARE NUMBER	SPARE NUMBER
	171	1	SPARE NUMBER	SPARE NUMBER
	172	1	SPARE NUMBER	SPARE NUMBER
	173	1	SPARE NUMBER	SPARE NUMBER
	174	1	SPARE NUMBER	SPARE NUMBER
	175	1	SPARE NUMBER	SPARE NUMBER
	176	1	SPARE NUMBER	SPARE NUMBER
	177	1	SPARE NUMBER	SPARE NUMBER
	178	1	SPARE NUMBER	SPARE NUMBER
	179	1	SPARE NUMBER	SPARE NUMBER
	180	1	GLASTENDER	ICE & WATER UNIT, DROP-IN
	181	1	LA MARZOCCO	2 GROUP ESPRESSO CAPPUCCINO MACHINE
	182	1	EVERPURE	WATER FILTER ASSEMBLY
	183	1	SPARE NUMBER	SPARE NUMBER
	184	1	SPARE NUMBER	SPARE NUMBER
	185	1	ADVANCE TABCO	ICE BIN, DROP-IN
	186	1	FISHER	GLASS FILLER
	187	1	FABRICATOR	DRAIN PAN
(VEND)	188	1	CLUTIS	COFFEE TEA BREWER
	189	1	CONTINENTAL	REFRIGERATOR, UNDERCOUNTER, REACH-IN
	190	1	MAHLKONG	COFFEE GRINDER
	190.1	1	RUBBERMAID	TRASH CAN
	191	1	FABRICATOR	TRASH CHUTE
	192	1	FABRICATOR	DROP-IN, DUMP SINK
	193	1	SPARE NUMBER	SPARE NUMBER
	194	1	SPARE NUMBER	SPARE NUMBER
	195	1	FABRICATOR	DROP-IN, HAND SINK
	195.1	1	T&S BRASS	FAUCET, DECK MOUNT
	195.2	1	BOBRICK	SOAP DISPENSER
	195.3	1	BOBRICK	PAPER TOWEL DISPENSER
	196	1	SPARE NUMBER	SPARE NUMBER
	197	1	SPARE NUMBER	SPARE NUMBER
	198	1	SPARE NUMBER	SPARE NUMBER
	199	1	SPARE NUMBER	SPARE NUMBER
	200	1	GLASTENDER	UNDERBAR DRY WASTE UNIT
	201	1	GLASTENDER	MIXOLOGY UNIT
(GC)	202	1	BY G.C.	DRINK RAIL
	203	1	SPARE NUMBER	SPARE NUMBER
	204	1	SPARE NUMBER	SPARE NUMBER
	205	1	GLASTENDER	UNDERBAR ICE BIN/COCKTAIL UNIT
	206	1	GLASTENDER	UNDERBAR BOTTLE DISPLAY UNIT
	207	1	GLASTENDER	UNDERBAR HAND SINK
	208	1	GLASTENDER	UNDERBAR DRY WASTE UNIT
(VEND)	209	1	HOBART	DISHWASHER, UNDERCOUNTER
	210	1	GLASTENDER	UNDERBAR DRAIN WORKBOARD UNIT
	211	1	GLASTENDER	MIXOLOGY UNIT
(GC)	212	1	BY G.C.	DRINK RAIL
	213	1	SPARE NUMBER	SPARE NUMBER
	214	1	SPARE NUMBER	SPARE NUMBER
	215	1	GLASTENDER	UNDERBAR ICE BIN/COCKTAIL UNIT
	216	1	GLASTENDER	UNDERBAR BOTTLE DISPLAY UNIT
	217	1	GLASTENDER	UNDERBAR DRY WASTE UNIT
	218	1	GLASTENDER	BACKBAR CABINET, REFRIGERATED
	219	1	GLASTENDER	BACKBAR CABINET, REFRIGERATED
	220	1	BY OWNER	POS - PRINTER
	221	1	BY OWNER	POS - CASH REGISTER
	222	1	BY OWNER	POS - CASH REGISTER
	225	1	BY OWNER	POS - PRINTER
	226	1	GLASTENDER	GLASS FROSTER
	227	1	GLASTENDER	BACKBAR CABINET, REFRIGERATED
	228	3	FABRICATOR	S/S WALL CAP
	229	8	FABRICATOR	CORNER GUARDS
	300	1	GLASTENDER	MIXOLOGY UNIT
	301	1	GLASTENDER	UNDERBAR ICE BIN/COCKTAIL UNIT
	302	1	GLASTENDER	UNDERBAR BOTTLE DISPLAY UNIT
	303	1	SPARE NUMBER	SPARE NUMBER
	304	1	SPARE NUMBER	SPARE NUMBER
	305	1	GLASTENDER	UNDERBAR DRY WASTE UNIT
	306	1	GLASTENDER	UNDERBAR HAND SINK
	307	1	GLASTENDER	MIXOLOGY UNIT
	308	1	GLASTENDER	UNDERBAR ICE BIN/COCKTAIL UNIT
	309	1	GLASTENDER	UNDERBAR BOTTLE DISPLAY UNIT
	310	1	GLASTENDER	UNDERBAR DRAIN WORKBOARD UNIT
(GC)	311	1	BY G.C.	DRINK RAIL
	312	1	GLASTENDER	BACKBAR CABINET, REFRIGERATED
(GC)	313	1	BY G.C.	DRINK RAIL
	314	1	SPARE NUMBER	SPARE NUMBER
	315	1	GLASTENDER	GLASS FROSTER
	316	1	ADVANCE TABCO	HAND SINK WITH TOWEL AND SOAP DISPENSER
	317	1	CAMBRO	WALK-IN SHELVING (LOT)
	317.1	1	RUBBERMAID	TRASH CAN
	318	1	FABRICATOR	BUSSING STATION
	319	1	T&S BRASS	PRE-RINSE FAUCET ASSEMBLY
	320	1	HOBART	DISHWASHER, UNDERCOUNTER
	321	1	CAMBRO	WALK-IN SHELVING (LOT)
	322	1	CAMBRO	SECURITY UNIT
	323	1	SPARE NUMBER	SPARE NUMBER
	324	1	SPARE NUMBER	SPARE NUMBER
	325	1	HOSHIZAKI	ICE MAKER, CUBE-STYLE
	326	1	HOSHIZAKI	ICE BIN FOR ICE MACHINES
	326.1	1	SAN JAMAR	ICE SCOOP HOLDER
	327	1	EVERPURE	WATER FILTER ASSEMBLY
	400	1	FOLLETT	ICE BIN FOR ICE MACHINES
	400.1	1	SAN JAMAR	ICE SCOOP HOLDER
	401	1	HOSHIZAKI	ICE MAKER, CUBE-STYLE
	402	1	FETCO	TEA BREWER, CEED
	403	1	SPARE NUMBER	SPARE NUMBER
	404	1	SPARE NUMBER	SPARE NUMBER
	405	1	EVERPURE	WATER FILTER ASSEMBLY
	406	1	FETCO	COFFEE BREWER
	407	1	CONTINENTAL	REFRIGERATOR, UNDERCOUNTER, REACH-IN
	408	1	FABRICATOR	WORK TABLE
	409	1	ADVANCE TABCO	HAND SINK WITH TOWEL AND SOAP DISPENSER
	410	1	ADVANCE TABCO	DISHTABLE SORTING SHELF
	411	1	FABRICATOR	CLEAN DISH TABLE
	412	1	STREIVOR	CONDENSATE HOOD
	413	1	SPARE NUMBER	SPARE NUMBER
	414	1	SPARE NUMBER	SPARE NUMBER

PR	ITEM	QTY	SOURCE	DESCRIPTION
	415	1	HOBART	DISHWASHER, DOOR TYPE
(VEND)	416	1	T&S BRASS	PRE-RINSE FAUCET ASSEMBLY
	417	1	HOBART	DISHWASHER, UNDERCOUNTER
	418	1	FABRICATOR	SOILED DISHTABLE
	418.1	2	RUBBERMAID	TRASH CAN
	419	1	ADVANCE TABCO	DISHTABLE SORTING SHELF
	420	3	HATCO	DECORATIVE LAMP
	421	1	FABRICATOR	WALL-MOUNTED, FOLDING WORK TABLE
	422	3	HATCO	DECORATIVE LAMP
	423	1	SPARE NUMBER	SPARE NUMBER
	424	1	SPARE NUMBER	SPARE NUMBER
	425	1	FABRICATOR	WALL-MOUNTED, FOLDING WORK TABLE
	426	1	ALTO-SHAAM	HEATED CABINET, BANQUET
	427	1	ALTO-SHAAM	HEATED CABINET, BANQUET
	428	1	CARTER-HOFFMANN	CART, BANQUET SERVICE
	429	1	CONTINENTAL	REFRIGERATOR, REACH-IN
	430	2	METRO	CART / DOLLY, DISH
	431	1	CAMBRO	DRY STORAGE SHELVING (LOT)
	432	4	CAMBRO	DOLLY, DISHWASHER RACK
	433	4	FABRICATOR	CORNER GUARDS

PROCUREMENT LEGEND

CODE	DESCRIPTION
(E)	EXISTING EQUIPMENT AS SHOWN.
(E/M)	EQUIPMENT TO BE MODIFIED BY K.E.C.
(E/M/R)	EXISTING EQUIPMENT, MODIFIED NY K.E.C./RELOCATED.
(E/R)	EXISTING EQUIPMENT TO BE RELOCATED.
(E/S/R)	EXISTING EQUIPMENT IN STORAGE (REINSTALL).
(FUT)	EQUIPMENT TO BE INSTALLED AT A FUTURE DATE.
(GC)	EQUIPMENT PROVIDED BY GENERAL CONTRACTOR.
(NIKEC)	NOT IN KITCHEN EQUIPMENT CONTRACT.
(OTHER)	EQUIPMENT PROVIDED BY OTHERS.
(OWN)	EQUIPMENT PROVIDED BY OWNER.
(SMWRS)	SEPARATE SMALL WARES BID.
(VEND)	EQUIPMENT PROVIDED BY VENDOR/SUPPLIER.

AREA FOR CITY APPROVAL STAMP

FOR
REFERENCE

Contractor shall be responsible for reviewing all Plans and Specifications, verifying all existing conditions prior to proceeding with Construction, complying with all applicable