

EQUIPMENT SCHEDULE

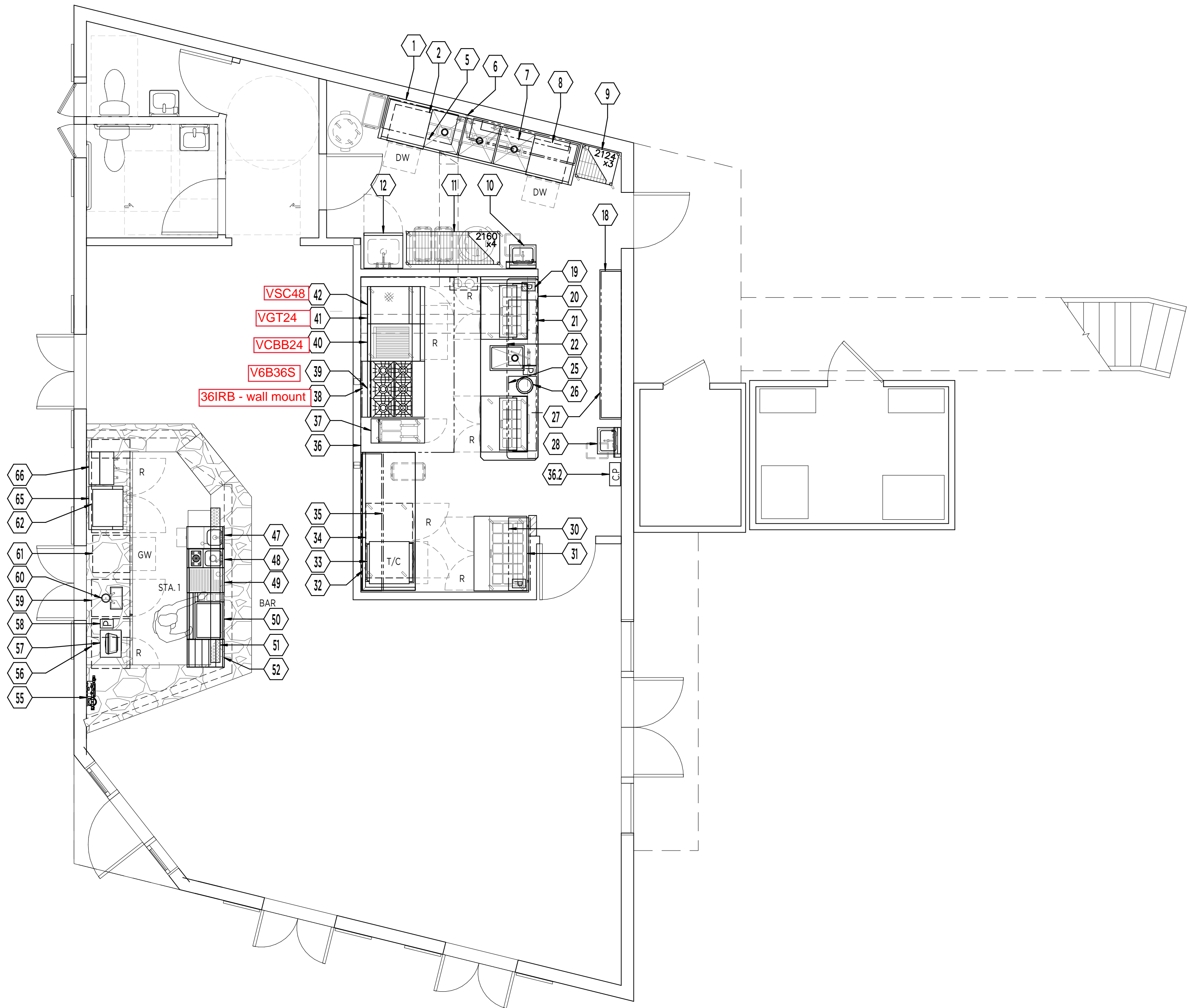
PR	ITEM	QTY	SOURCE	DESCRIPTION
	1	1	FABRICATOR	THREE COMPARTMENT POT SINK
(VEND)	2	1	ECOLAB	DISHWASHER, UNDERCOUNTER
	3	1	SPARE NUMBER	SPARE NUMBER
	4	1	SPARE NUMBER	SPARE NUMBER
	5	1	FABRICATOR	SLANTED RACK SHELF
	6	1	T&S BRASS	PRE-RINSE FAUCET ASSEMBLY, WITH ADD ON FAUCET
	7	1	FABRICATOR	DOUBLE WALL SHELF W/ POT RACK
(VEND)	8	1	ECOLAB	DISHWASHER, UNDERCOUNTER
	9	1	METRO	STEM CASTER CART
	10	1	IMC TEDDY	HAND SINK W/SOAP & TOWEL DISPENSER
	11	1	METRO	STEM CASTER CART
	12	1	ADVANCE TABCO	MOP SINK CABINET
	13	1	SPARE NUMBER	SPARE NUMBER
	14	1	SPARE NUMBER	SPARE NUMBER
	15	1	SPARE NUMBER	SPARE NUMBER
	16	1	SPARE NUMBER	SPARE NUMBER
	17	1	SPARE NUMBER	SPARE NUMBER
	18	1	FABRICATOR	WALL SHELF
	19	3	BY OWNER	POS - PRINTER
	20	1	FABRICATOR	CHEF UNIT
	21	1	HATCO	HEAT LAMP, STRIP TYPE
	22	1	FABRICATOR	DOUBLE OS (OFFSET)
	23	1	SPARE NUMBER	SPARE NUMBER
	24	1	SPARE NUMBER	SPARE NUMBER
	25	1	HATCO	HEAT LAMP, STRIP TYPE
	26	1	ALTO-SHAAM	DROP-IN HOT FOOD ROUND (SOUP) WELL
	27	1	FABRICATOR	STORAGE CABINET
	28	1	IMC TEDDY	HAND SINK W/SOAP & TOWEL DISPENSER
	29	1	SPARE NUMBER	SPARE NUMBER
	30	1	FABRICATOR	DOUBLE WALL SHELF
	31	1	CONTINENTAL	REFRIGERATED SANDWICH UNIT
	32	1	FABRICATOR	PREP TABLE
	33	1	TURBOCHEF	OVEN, COMBINATION RAPID COOK
	34	1	CONTINENTAL	REFRIGERATOR, UNDERCOUNTER, REACH-IN
	35	1	FABRICATOR	DOUBLE WALL SHELF
(NIKEC)	36	1		EXHAUST HOOD
	36.1	1	ANSUL	FIRE SUPPRESSION SYSTEM
	36.2	1	CAPTIVE AIRE	HOOD CONTROL PANEL
	37	1	PRICO	FRYER, GAS
	38	1	VULCAN	SALAMANDER BROILER, GAS
	39	1	VULCAN	HEAVY DUTY GAS RANGE
	40	1	VULCAN	RANGE, 24" HEAVY DUTY, GAS
	41	1	VULCAN	RANGE, 24" HEAVY DUTY, GAS
	42	1	VULCAN	EQUIPMENT STAND, REFRIGERATED BASE
	43	1	SPARE NUMBER	SPARE NUMBER
	44	1	SPARE NUMBER	SPARE NUMBER
	45	1	SPARE NUMBER	SPARE NUMBER
	46	1	SPARE NUMBER	SPARE NUMBER
	47	1	PERLICK	UNDERBAR HAND SINK
	48	1	PERLICK	DUMP SINK W/ RINSER
	49	1	PERLICK	UNDERBAR STORAGE CABINET
	50	1	PERLICK	UNDERBAR ICE CHEST
	51	1	FABRICATOR	DRINK RAIL
	52	1	PERLICK	UNDERBAR BOTTLE STORAGE DISPLAY UNIT
	53	1	SPARE NUMBER	SPARE NUMBER
	54	1	SPARE NUMBER	SPARE NUMBER
	55	1	EVERPURE	WATER FILTER ASSEMBLY
	56	1	PERLICK	BACKBAR REFRIGERATOR
(OWN)	57	1	BY OWNER	POS - CASH REGISTER
(OWN)	58	1	BY OWNER	POS - PRE CHECK PRINTER
	59	1	PERLICK	BACKBAR REFRIGERATOR
	60	1	PERLICK	AIR COOLED DIRECT DRAW DISPENSING KIT
(VEND)	61	1	ECOLAB	DISHWASHER, UNDERCOUNTER
	62	1	PERLICK	BACKBAR REFRIGERATOR
	63	1	SPARE NUMBER	SPARE NUMBER
	64	1	SPARE NUMBER	SPARE NUMBER
(VEND)	65	1	LA MARZOCCO	2 GROUP ESPRESSO CAPPUCCINO MACHINE
(VEND)	66	1	FETCO	COFFEE BREWER

\*\*\*PROCUREMENT LEGEND\*\*\*

CODE	DESCRIPTION
(E)	EXISTING EQUIPMENT AS SHOWN.
(E/M)	EQUIPMENT TO BE MODIFIED BY K.E.C.
(E/M/R)	EXISTING EQUIPMENT, MODIFIED NY K.E.C./RELOCATED.
(E/R)	EXISTING EQUIPMENT TO BE RELOCATED.
(E/S/R)	EXISTING EQUIPMENT IN STORAGE (REINSTALL).
(FUT)	EQUIPMENT TO BE INSTALLED AT A FUTURE DATE.
(GC)	EQUIPMENT PROVIDED BY GENERAL CONTRACTOR.
(NIKEC)	NOT IN KITCHEN EQUIPMENT CONTRACT.
(OTHER)	EQUIPMENT PROVIDED BY OTHERS.
(OWN)	EQUIPMENT PROVIDED BY OWNER.
(SMWRS)	SEPARATE SMALL WARES BID.
(VEND)	EQUIPMENT PROVIDED BY VENDOR/SUPPLIER.

G.C. NOTES

- GENERAL CONTRACTOR TO COORDINATE W/ K.E.C. ON ALL MILLWORK, CRITICAL DIMENSIONS, DELIVERY OF EQUIPMENT & TIME SCHEDULE.
- GENERAL CONTRACTOR WILL REINFORCE ALL WALLS BEHIND WALL-MOUNTED EQUIPMENT. (SEE SPECIAL CONDITIONS PLAN)
- PLUMBER WILL COMPLETELY INSTALL ALL HAND SINKS, FLOOR TROUGHS, DISPOSERS, & FAUCETS (AS PROVIDED BY THE K.E.C.)
- REFER TO ARCHITECTURAL DRAWINGS FOR FINISH SCHEDULE AND MILLWORK DETAILS.
- ALL ROUGH-INS AND FINAL CONNECTIONS WILL BE DONE BY GENERAL CONTRACTOR, EXCEPT WHERE NOTED.
- GENERAL CONTRACTOR TO PREVIEW SPECIAL CONDITIONS PLANS, SHEET SERIES (FS 401-SC) FOR ADDITIONAL G.C. RELATED SCOPE OF WORK SUCH AS BUT NOT LIMITED TO, BEER/SODA CONDUITS, WALL BACKINGS, SLAB WORK, FINISHES & MILLWORK CUT-OUTS.
- GENERAL CONTRACTOR TO READ ALL NOTES AND REVIEW ALL FOODSERVICE PLANS FOR COMPLETE SCOPE OF WORK.



LEVEL 1 - BISTRO

1/4" = 1'-0"

EQUIPMENT FLOOR PLAN

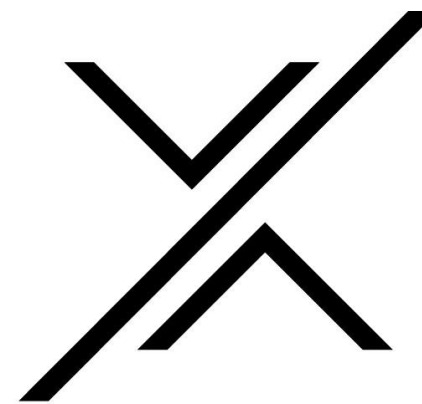
K.E.C. NOTES

- REFER TO ARCHITECTURAL DRAWINGS FOR FINISH SCHEDULE AND MILLWORK DETAILS.
- FOODSERVICE EQUIPMENT WILL BE SUPPLIED BY THE KITCHEN EQUIPMENT CONTRACTOR (K.E.C.), EXCEPT AS NOTED.
- THE KITCHEN EQUIPMENT CONTRACTOR (K.E.C.) WILL BE RESPONSIBLE FOR THE RECEIVING, STORAGE, DELIVERY TO SITE, UN-CRATING, ASSEMBLY, SETTING IN PLACE, LEVELING, AND SEALING OF ALL EQUIPMENT THAT THEY SUPPLY.
- ALL ROUGH-INS AND FINAL CONNECTIONS BY GENERAL CONTRACTOR, EXCEPT WHERE NOTED.
- K.E.C. TO FIELD VERIFY ALL ROUGH-INS AND CRITICAL DIMENSIONS; COORDINATE WITH GENERAL CONTRACTOR.
- K.E.C. TO HANG & INSTALL ALL WALL MOUNTED SHELVEING. USE STAINLESS STEEL TRUSS HEAD HARDWARE ONLY.
- K.E.C. TO PROVIDE MINIMUM 1 YEAR PARTS AND SERVICE WARRANTY FOR REFRIGERATION, COOKING, AND MECHANICAL EQUIPMENT.
- K.E.C. TO HANG EXHAUST HOODS ONLY, AND PROVIDE ANY PERMITS REQUIRED.
- K.E.C. TO PROVIDE FULLY OPERATIONAL FIRE SYSTEM AND OBTAIN ALL APPROVALS.
- K.E.C. TO PROVIDE FINAL START-UP OF ALL REFRIGERATION, RUN REQUIRED REFRIGERANT LINES AND HANG COILED.
- K.E.C. REFRIGERATION CONTRACTOR IS RESPONSIBLE FOR ALL PERMITS RELATED TO WALK-IN COOLERS & REFRIGERATION SYSTEMS AS REQUIRED BY LOCAL JURISDICTION.
- K.E.C. TO PROVIDE ALL GAS PRESSURE REGULATORS FOR EQUIPMENT REQUIRED BY MANUFACTURER. COORDINATE ALL INSTALLATIONS W/ PLUMBING CONTRACTOR AS PER LOCAL CODES.
- K.E.C. - FOR COMPLETE SPECIFICATIONS AND MODEL NUMBERS, THESE PLANS MUST BE BID WITH FOODSERVICE SPECIFICATIONS BOOK.

COPYRIGHT

UNAUTHORIZED USE OF THE FOODSERVICE DESIGN, DETAILS, AUTOCAD BLOCKS, REVIT FAMILIES, AND SPECIFICATIONS CONTAINED IN THESE DOCUMENTS IS STRICTLY PROHIBITED. NSD INC. MAINTAINS OWNERSHIP OF SAME. THIS PROHIBITION EXTENDS FROM PRINTED MATERIAL TO ANY ELECTRONIC VERSIONS OF THE SAME. NO USE, OTHER THAN THAT FOR WHICH IT IS INTENDED, IS STRICTLY PROHIBITED WITHOUT WRITTEN PERMISSION FROM NEXT STEP DESIGN, INC. ALL RIGHTS RESERVED.

BOCA GRANDE, FL.



**NSD**  
FOODSERVICE  
CONSULTANTS

**NEXT STEP DESIGN**  
913 West Street Annapolis, MD 21401  
Ph: (410) 263-1200  
nextstepdesign.com

ISSUE	DATE
50% DD SET	07/25/22


DATE:	SCALE:
07-25-22	1/4" = 1'-0"
PROJECT #:	DRAWN:
-	JR

FOODSERVICE EQUIPMENT  
FLOOR PLAN

SHEET #:  
**FS 101-EQ**

3RD STREET BISTRO