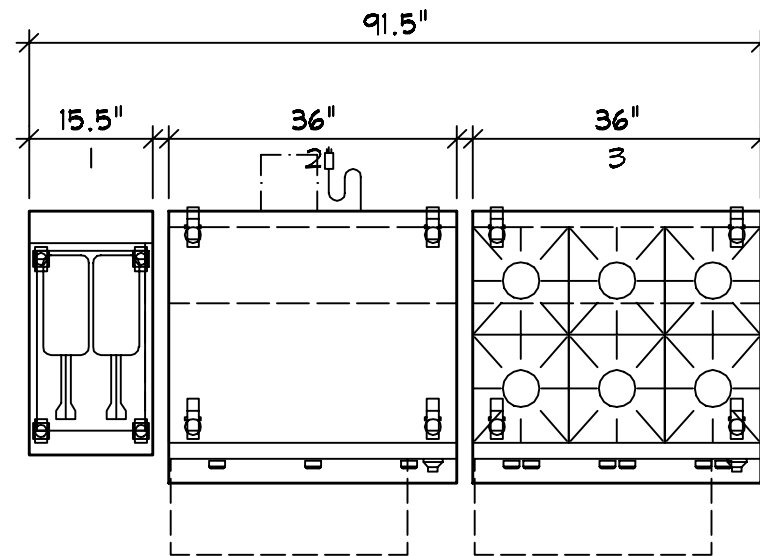


PLAN VIEW



VH-ASCAY

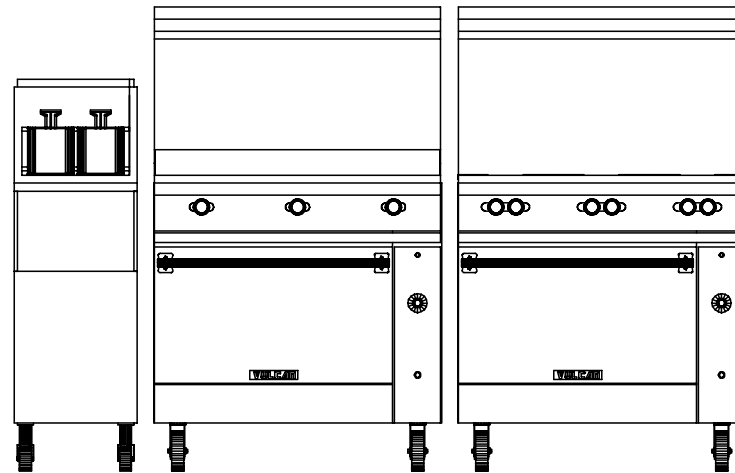
COPYRIGHT (C) 2022

 **VULCAN**

DARREL CHAMBERLIN
ASCAY

ASCAYA
04-27-22

ELEVATION



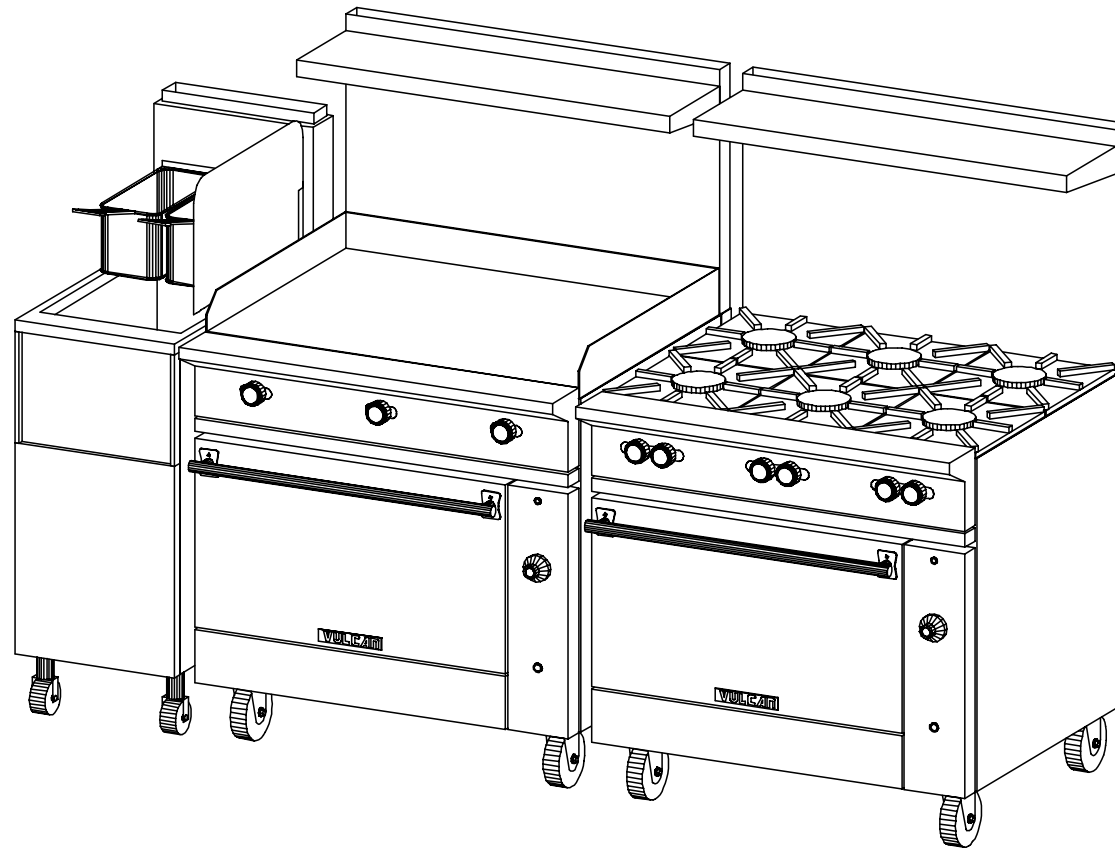
VH-ASCAY
COPYRIGHT (C) 2022

 **VULCAN**

DARREL CHAMBERLIN
ASCAY

ASCAYA
04-27-22

6SE VIEW



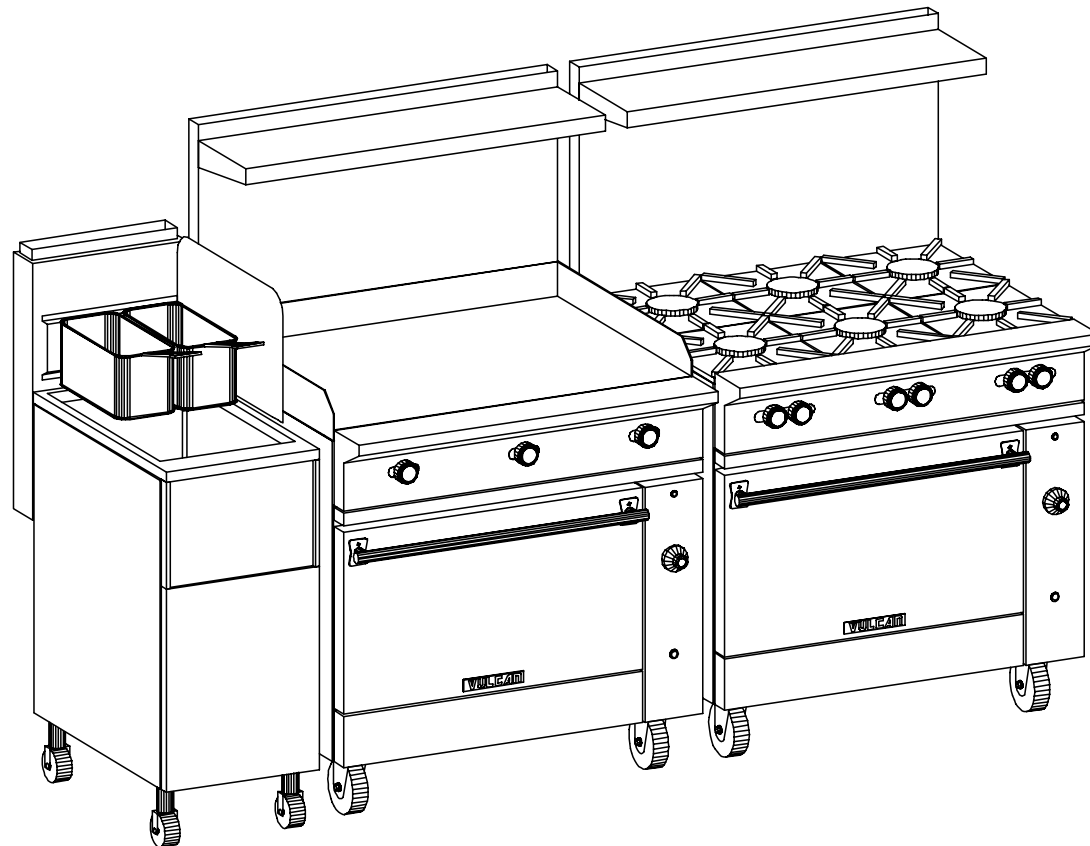
VH-ASCAY
COPYRIGHT (C) 2022

 **VULCAN**

DARREL CHAMBERLIN
ASCAY

ASCAYA
04-27-22

SSW VIEW



VH-ASCAY
COPYRIGHT (C) 2022

 **VULCAN**

DARREL CHAMBERLIN
ASCAY

ASCAYA
04-27-22

GENERAL NOTES - PLEASE READ**VENTILATION:**

ALL COOKING EQUIPMENT MUST BE VENTILATED BY AN APPROVED APPLIANCE IN ACCORDANCE WITH ALL APPLICABLE CODES.

FIRE SUPPRESSION:

ALL COOKING EQUIPMENT MUST BE PROTECTED BY AN APPROVED FIRE SUPPRESSION SYSTEM IN ACCORDANCE WITH ALL APPLICABLE CODES.

CONNECTIONS:

ALL PIPING, FITTINGS, AND INTERCONNECTION SERVICES SHOWN ARE TO BE SUPPLIED AND INSTALLED BY LICENSED CONTRACTORS IN ACCORDANCE WITH ALL LOCAL CODES.

GAS CONNECTIONS:

EXTERNAL GAS REGULATORS, FLEXIBLE GAS LINES AND RESTRAINING CABLES PROVIDED WITH THE EQUIPMENT MUST BE INSTALLED BY LICENSED CONTRACTORS IN ACCORDANCE WITH ALL LOCAL CODES. INCOMING GAS MANIFOLD SUPPLY PRESSURE MUST NOT EXCEED 0.5 PSI (14" W.C.)

BY OTHERS:

VERIFY ALL EQUIPMENT LISTED AS BY OTHERS FOR SIZE AND MECHANICAL SERVICE REQUIREMENTS.

NOTE:

IN LINE WITH THE POLICY TO CONTINUALLY IMPROVE ITS PRODUCTS, THE MANUFACTURER RESERVE THE RIGHT TO CHANGE MATERIALS AND SPECIFICATIONS WITHOUT NOTICE.

	CONNECTION POINT
	COLD WATER
	HOT WATER
	HOT + COLD WATER
	DRAIN
	POWER
	SWITCH
	CORD SET
	CONV OUTLET RECP
	DUPLEX RECPTACLE
	SINGLE RECPTACLE
	GAS
	STEAM SUPPLY
	STEAM RETURN
	STEAM TAKE OFF
	EXHAUST VENT
	SUPPLY VENT
	REFRIGERATION

04-27-2022

04-27-2022 : 06:17:12a

04-27-2022 : 06:22:30a

Darrel Chamberlin
KLH MARKETING

v. 714-999-0100

Email: darrel@klh.com

PROJECT CODE

ASCAY