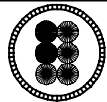


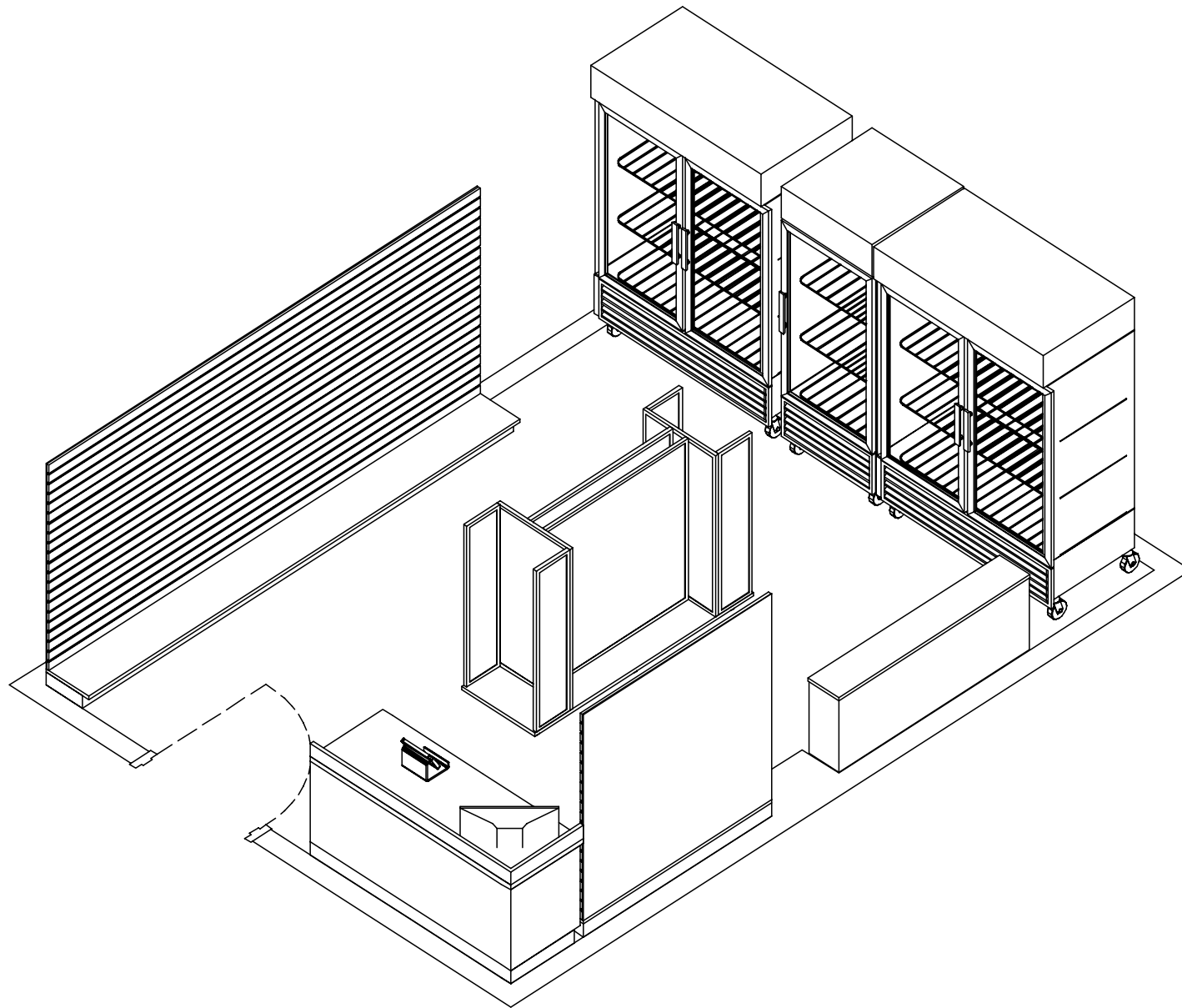
BO-ASB07



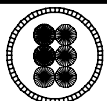
Business  
Opportunities  
for the Blind, Inc.

ASB  
TONY MILLER

PLAN VIEW  
ASTB - B  
08-30-21



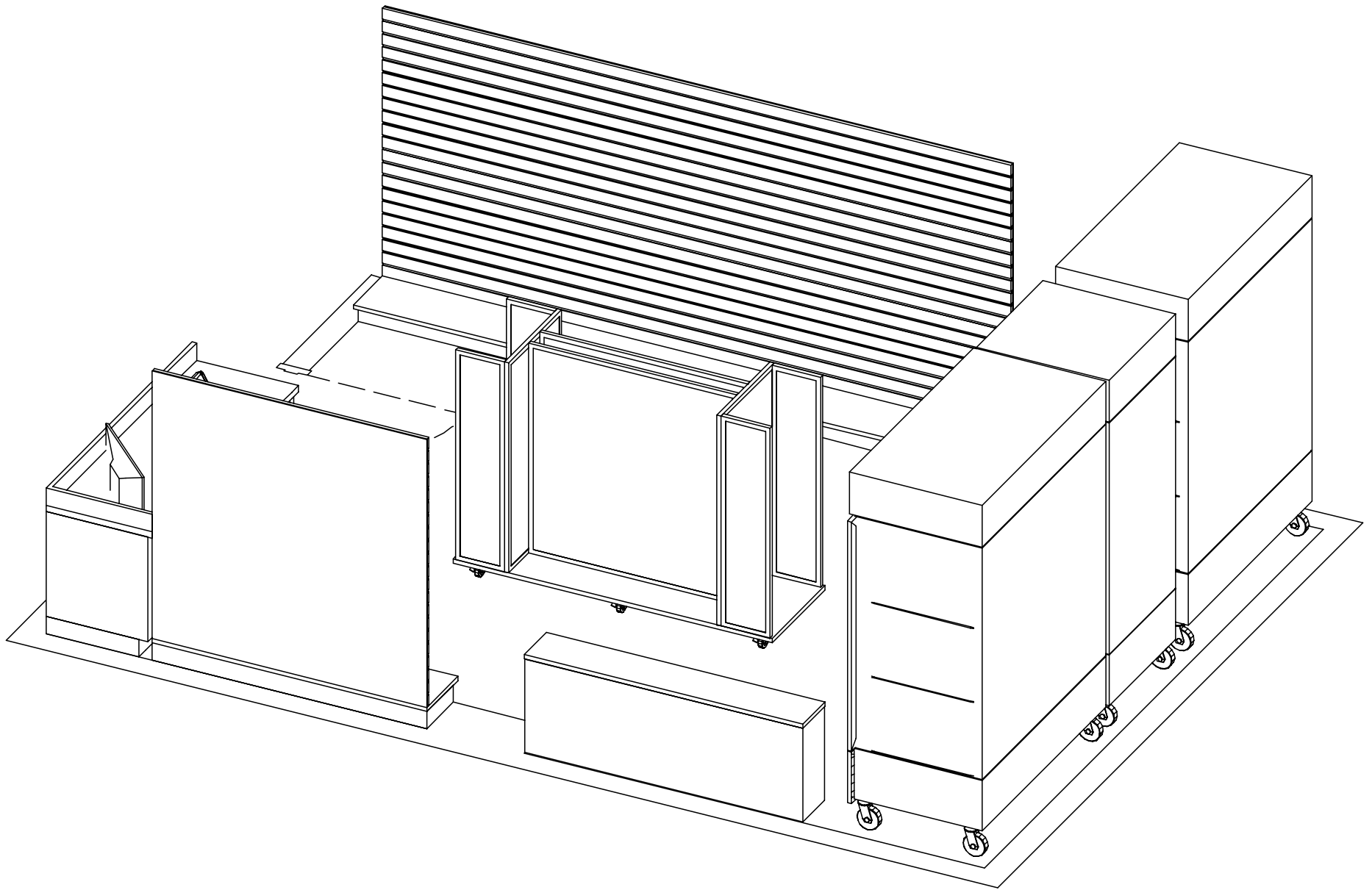
BO-ASB07



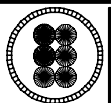
Business  
Opportunities  
for the Blind, Inc.

ASB  
TONY MILLER

NE VIEW  
ASTB - B  
08-30-21



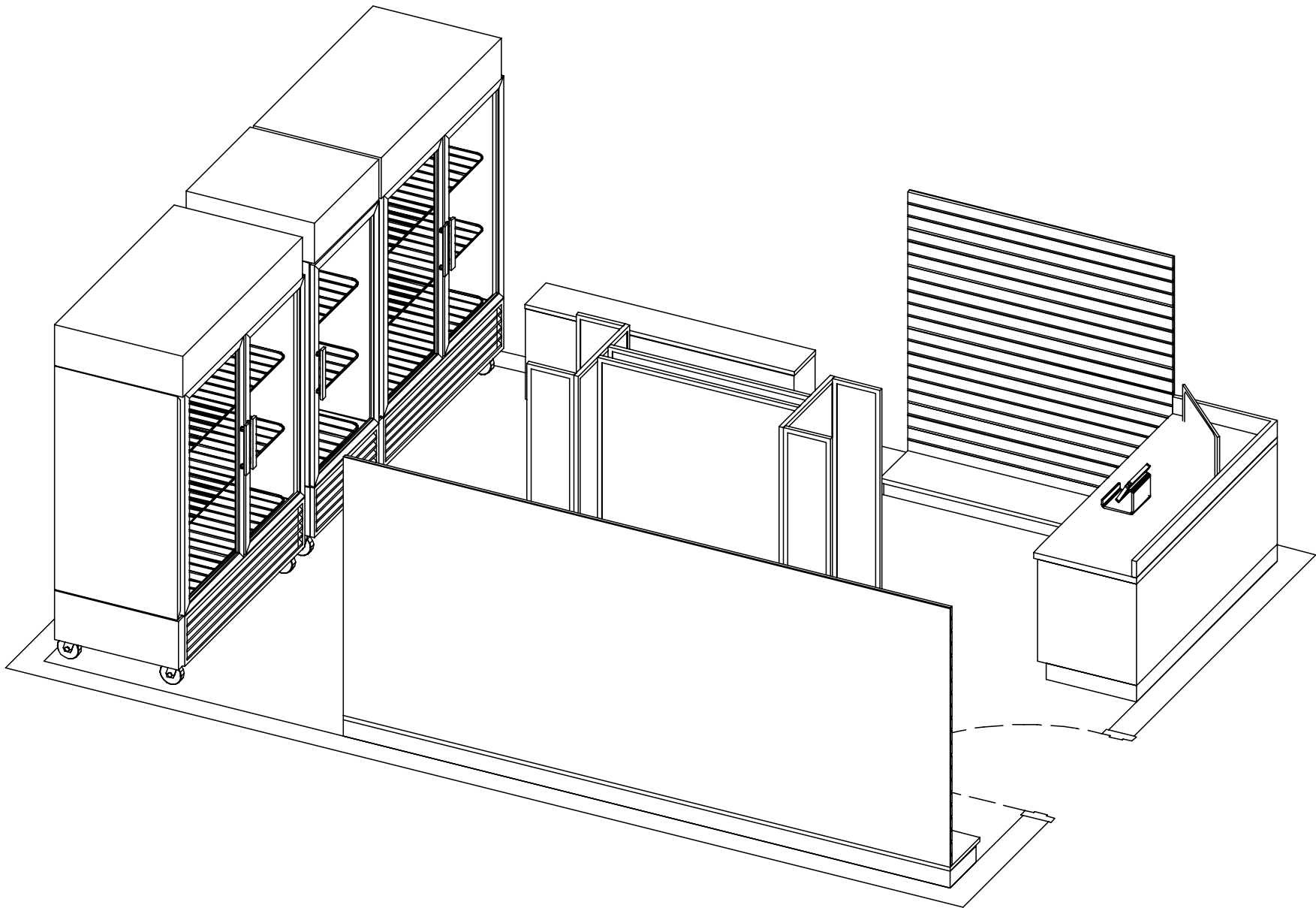
BO-ASB07



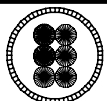
Business  
Opportunities  
for the Blind, Inc.

ASB  
TONY MILLER

NNW VIEW  
ASTB - B  
08-30-21



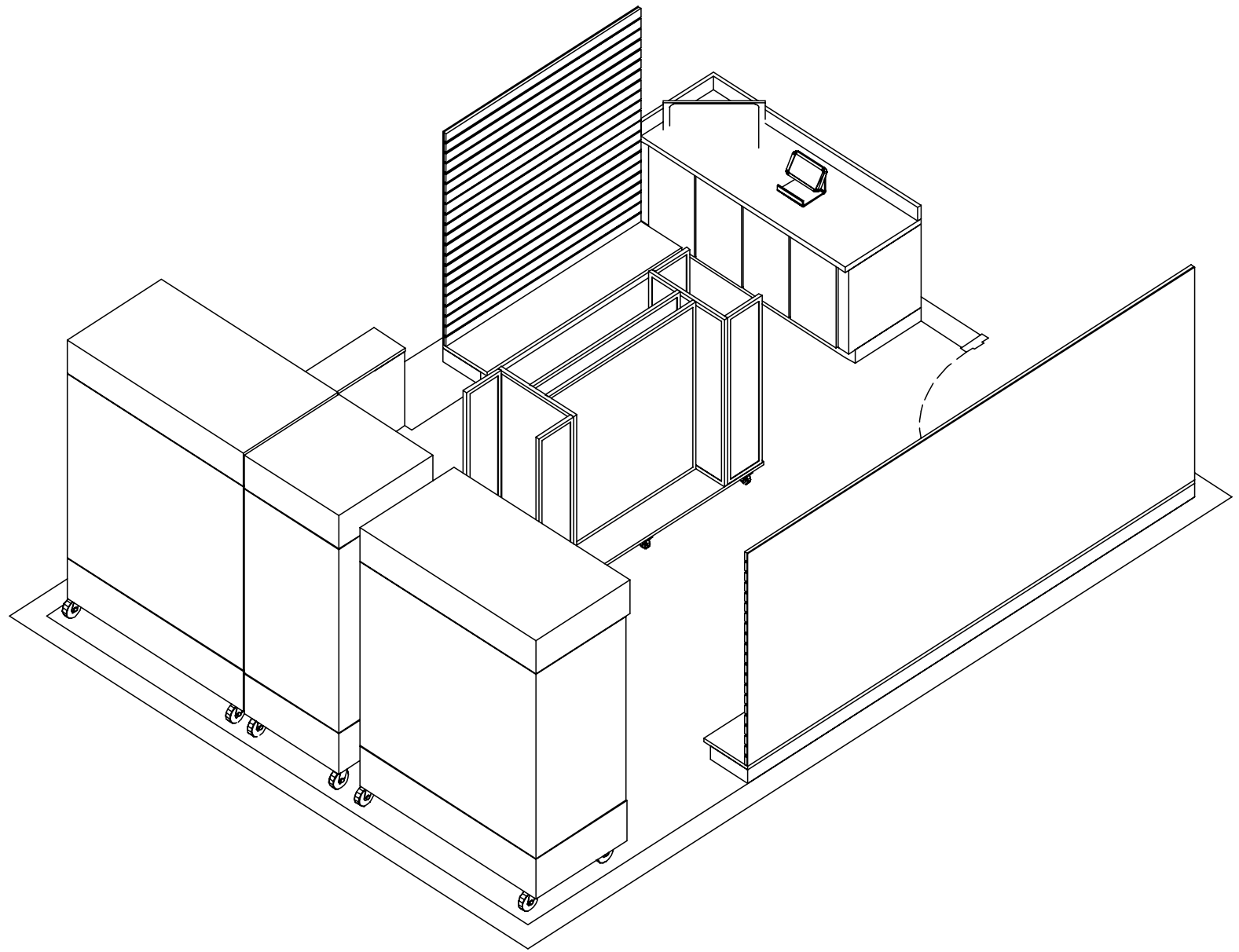
BO-ASB07



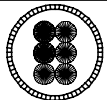
Business  
Opportunities  
for the Blind, Inc.

ASB  
TONY MILLER

SSE VIEW  
ASTB - B  
08-30-21



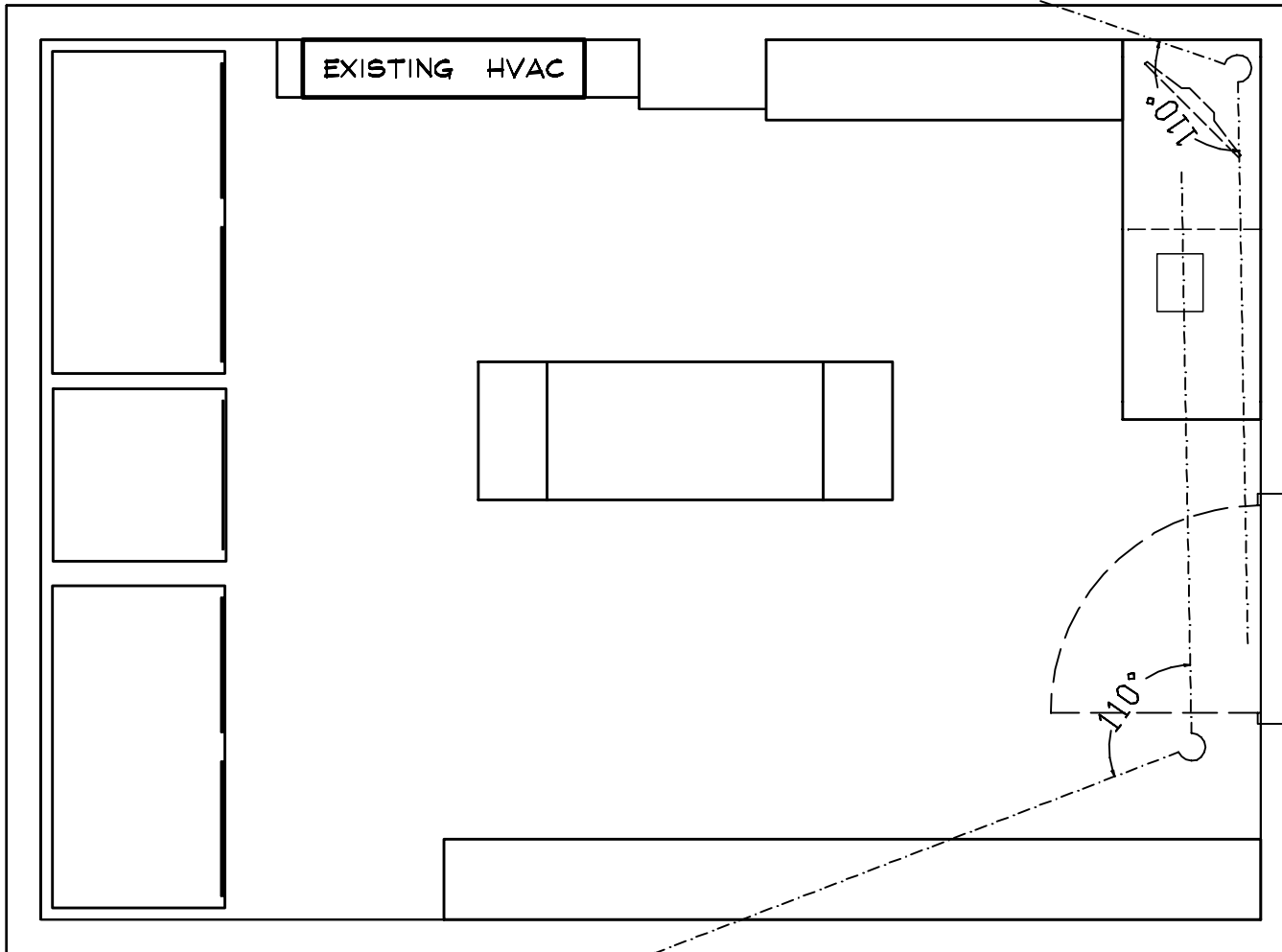
BO-ASB07



Business  
Opportunities  
for the Blind, Inc.

ASB  
TONY MILLER

SW VIEW  
ASTB - B  
08-30-21



BO-ASB07



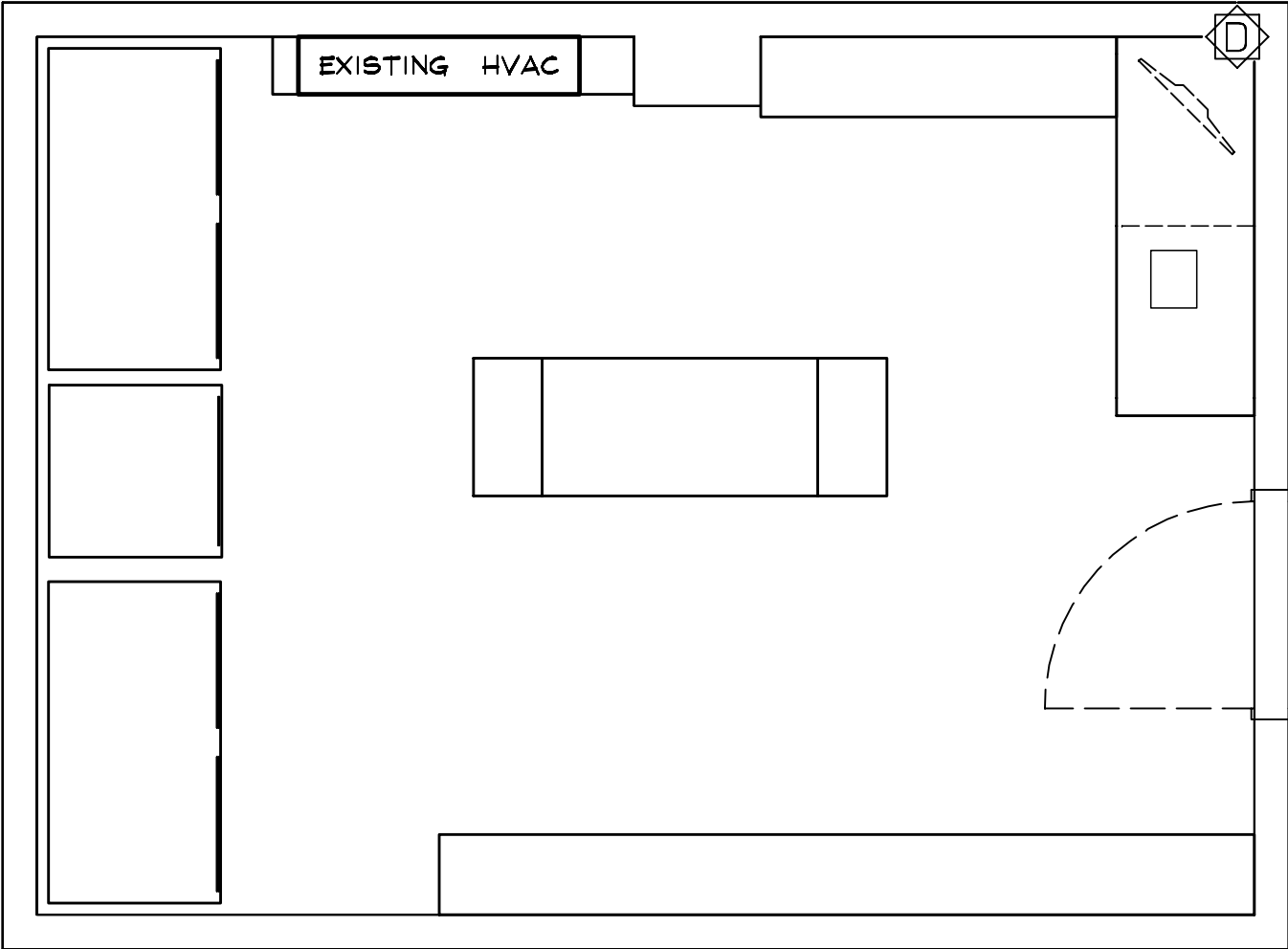
Business  
Opportunities  
for the Blind, Inc.

ASB  
TONY MILLER

SECURITY CAMERAS  
ASTB - B  
08-30-21

EXISTING DSL LINE  
CAT6 AND PHONE  
BY PRIVATE CONTRACTOR

DATA  
CONNECTION



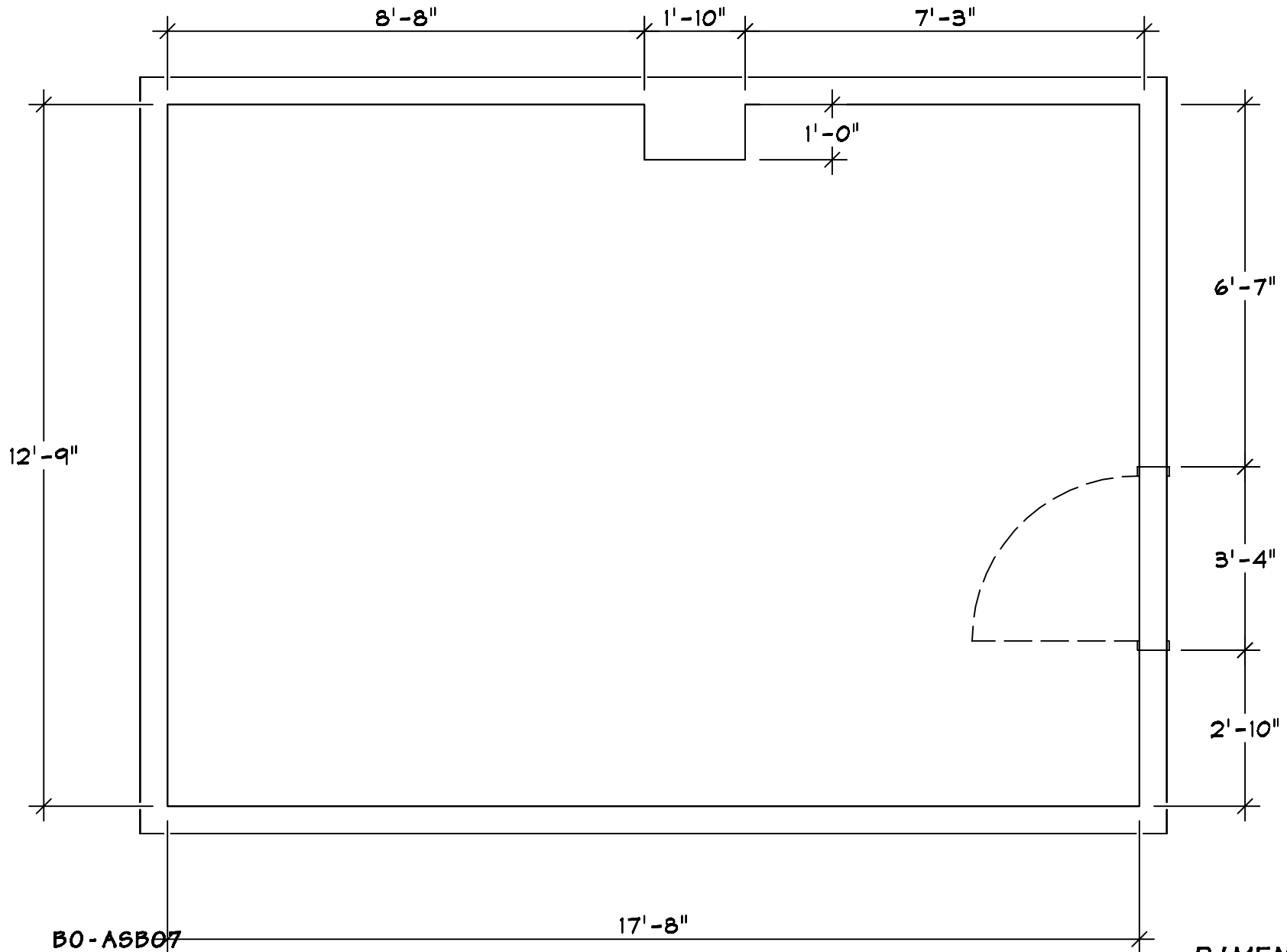
BO-ASB07



Business  
Opportunities  
for the Blind, Inc.

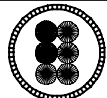
ASB  
TONY MILLER

DATA  
ASTB - B  
08-30-21



BO-ASB07

17'-8"

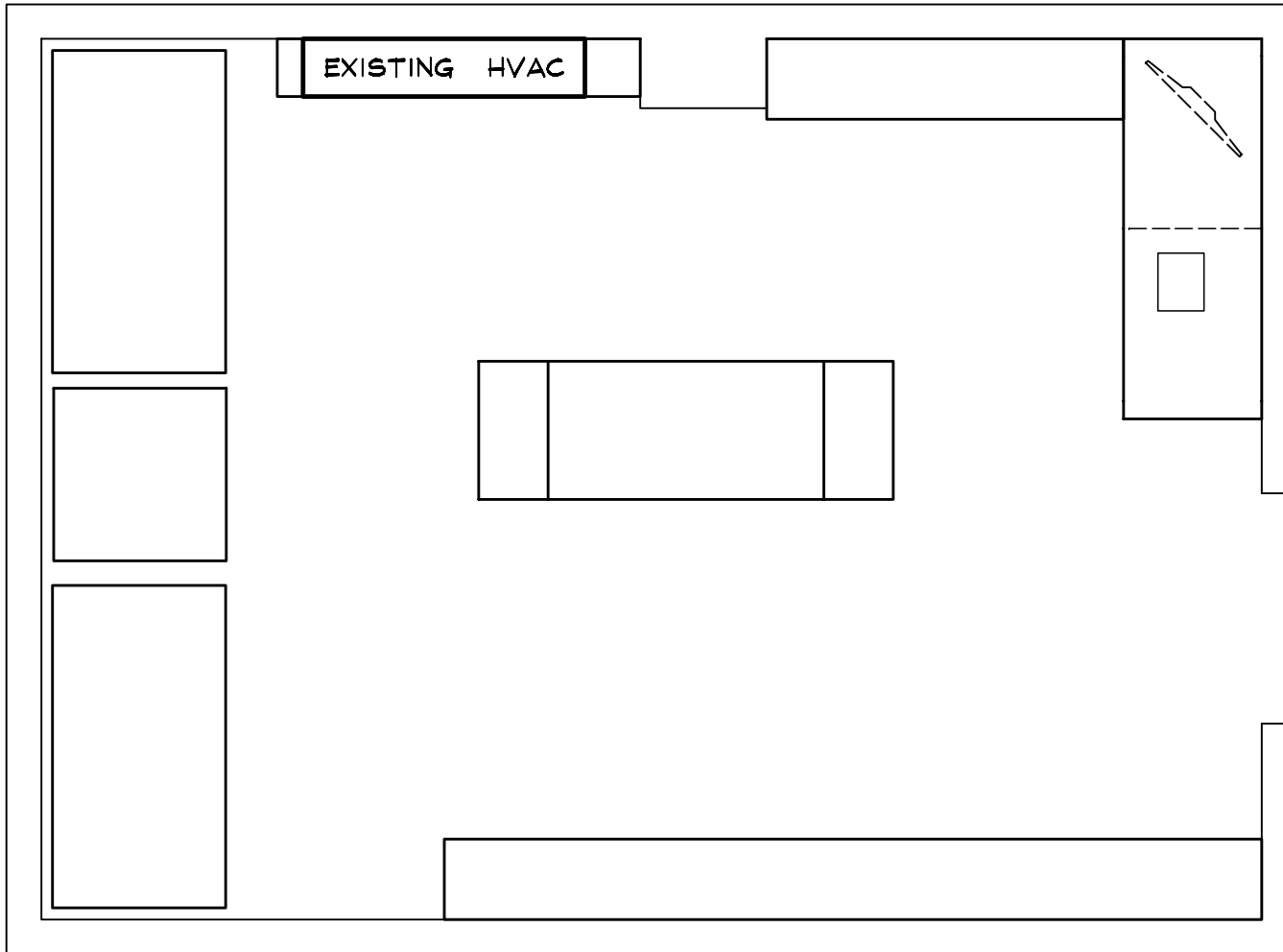


Business  
Opportunities  
for the Blind, Inc.

ASB  
TONY MILLER

**DIMENSIONS**  
**ASTB - B**  
08-30-21





**BO-ASB07**



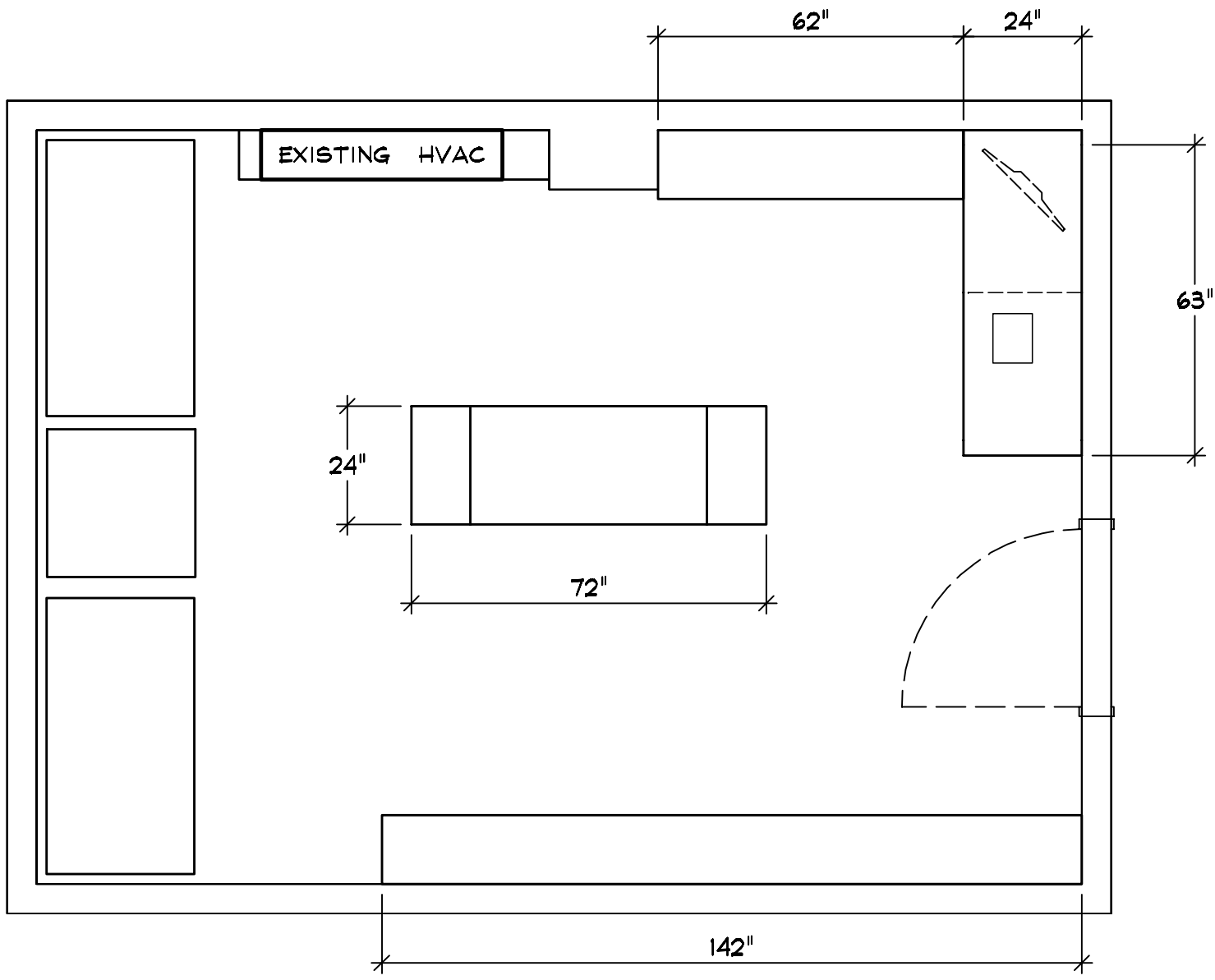
**Business  
Opportunities  
for the Blind, Inc.**

**ASB  
TONY MILLER**

**MILLWORK SIZES**

**ASTB - B**

**08-30-21**



BO-ASB07



Business  
Opportunities  
for the Blind, Inc.

ASB  
TONY MILLER

MILLWORK SIZES  
**ASTB - B**  
08-30-21

ITEM: 1      **2EA** GLASS DOOR MERCHANIDSER  
TRUE REFIGERATION GDM-47

MED TEMP SELF CONTAINED  
SLIDING GLASS DOORS  
ON CASTERS  
1E POWER - 120-1 CIRCUIT, 8.8 AMP, NEMA 5-15,  
RI 18" AFF, (2)GLASS DOOR MERCHANIDSER

ITEM: 2      **1 EA** GLASS DOOR MERCHANDISER  
TRUE REFIGERATION GDM-23

SELF CONTAINED MED TEMP  
RH HINGE  
ON CASTERS  
2E POWER - 120-1 CIRCUIT, 7.2 AMP, NEMA 5-15,  
RI 18" AFF, (1)GLASS DOOR MERCHANDISER

ITEM: 3      **1 EA** ISLAND DISPLAY  
MILLWORK CONTRACTOR

SIZE AND SHAPE PER DRAWING

ITEM: 4      **1 EA** SLAT WALL  
MILLWORK CONTRACTOR

14" BOTTOM SHELF  
66" OVER ALL HEIGHT  
SIZE AND SHAPE PER DRAWING

ITEM: 5      **1 EA** FLAT SCREEN DISPLAY  
BY VENDOR

5E POWER - 120-1 CIRCUIT, 1.0 AMP, NEMA 5-15,  
RI IN BASE AFF, (1)FLAT SCREEN DISPLAY  
\*VERIFY ALL MECHANICAL REQUIREMENTS\*

ITEM: 6      **1 EA** POS KIOSK  
MILLWORK CONTRACTOR

2 COMAPRTMENT BASE  
(1) SECTION OWNER SECURITY  
(1) SECTION POS ACCESS  
SIZE AND SHAPE PER DRAWING  
6E POWER - 120-1 CIRCUIT, 10.0 AMP,  
NEMA 5-15, QUAD RECEPTACLES, RI IN BASE AFF  
10 AMP MAX

ITEM: 7      **1 EA** POS STATION  
BY VENDOR

7E POWER - 120-1 CIRCUIT, 1.0 AMP, NEMA 5-15,  
RI IN BASE AFF, (1)POS STATION  
\*VERIFY ALL MECHANICAL REQUIREMENTS\*

ITEM: 8      **1 EA** SLAT WALL  
MILLWORK CONTRACTOR

14" BOTTOM SHELF  
66" OVER ALL HEIGHT  
SIZE AND SHAPE PER DRAWING

ITEM: 9      **1 EA** SECURITY EQUIPMENT  
BY OWNER

\* VERIFY ALL INFORMATION AND REQUIREMENTS\*

ITEM: 10      **1 EA**  
SPARE NUMBER

BO-ASB07



Business  
Opportunities  
for the Blind, Inc.

ASB  
TONY MILLER

ASTB - B  
08-30-21