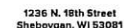


SIGNATURE _____ DATE _____

The designs, drawings, renderings, and other documents ("Designs") furnished by The Vollrath Company, L.L.C. ("Vollrath") to you (including anything in electronic format), are owned by Vollrath. Its licensors or other providers of those materials and are protected by United States and international copyright, trademark, patent, trade secret, and other intellectual property or proprietary rights laws, as applicable. The Designs may not be duplicated, reproduced, modified, or distributed, without the express written consent of Vollrath. All Designs prepared by Vollrath are provided to you on a confidential basis unless agreed otherwise in writing by Vollrath.

You may not use the Designs for any purpose unless you engage Vollrath to complete the design and construction in accordance with the Design and then only for the purpose of completing the design and construction. It is illegal to reproduce, duplicate, modify, resell, redistribute, lease, loan, or develop derivative work, in whole or in part, from the Designs without the express written consent of Vollrath.

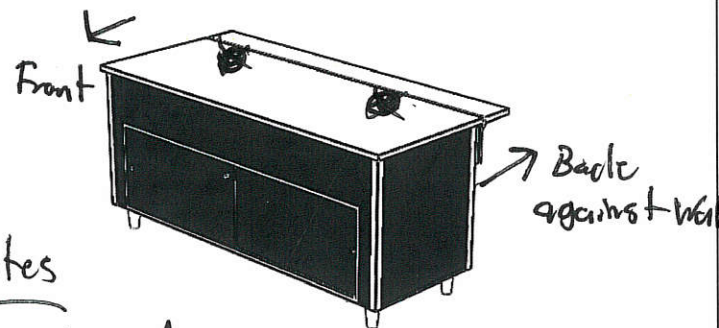
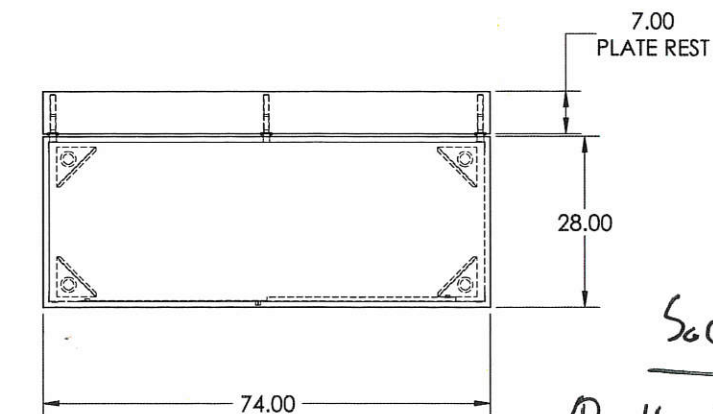


vollrathfoodservice.com

[illegible]

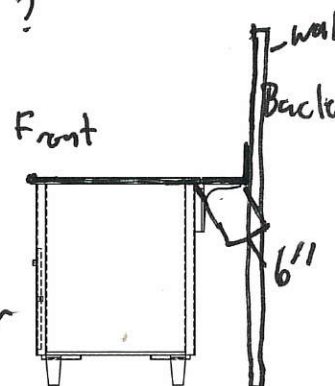
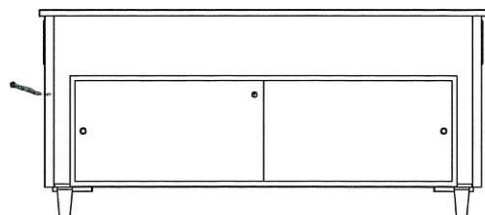
Arkansas St.
University

PROJECT NUMBER	C-14587
REFERENCE	
DATE	6/30/2022
SCALE	NTS
DRAWN BY	Mary Cacioppo
SHEET TITLE	VOLLRATH PLAN, FRONT, SIDE
SHEET NUMBER	1 of 1



Socleto Notes

- ① Height of Sliding doors?
- ② Swing doors an option?
- ③ Plate Rest Not Needed.
- ④ Doors in front.
- ⑤ Over Hang of 6" with Backsplash
- ⑥ Holes Drilled for Power & Water Lines



EQUIPMENT 1	EQUIPMENT 2	EQUIPMENT 3	BG TYPE	BG ELEC	VOLTS	AMPS	PLUG	BASE FINISH	BASE COLOR
UTILITY_SPACE 74IN	NONE NA	NONE NA	N/A	N/A	NA	0	N/A	STANDARD BLACK	NEVAMAR_S6053_JETT_BLACK