

37311 - REVISE

ENTIRE
SUBMITTAL

☐ APPROVED
AS NOTED

☒ REVISE &
RESUBMIT

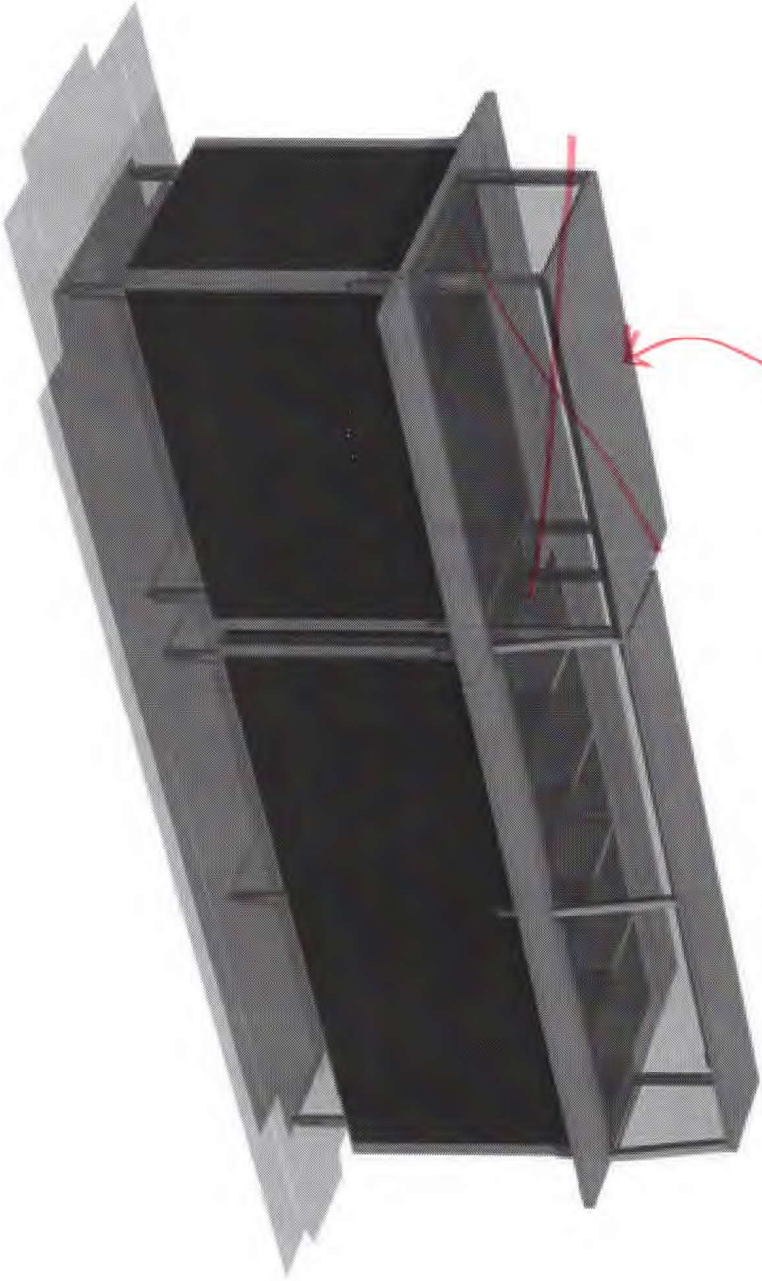
☐ NOT
APPROVED

DATE 6-15-21

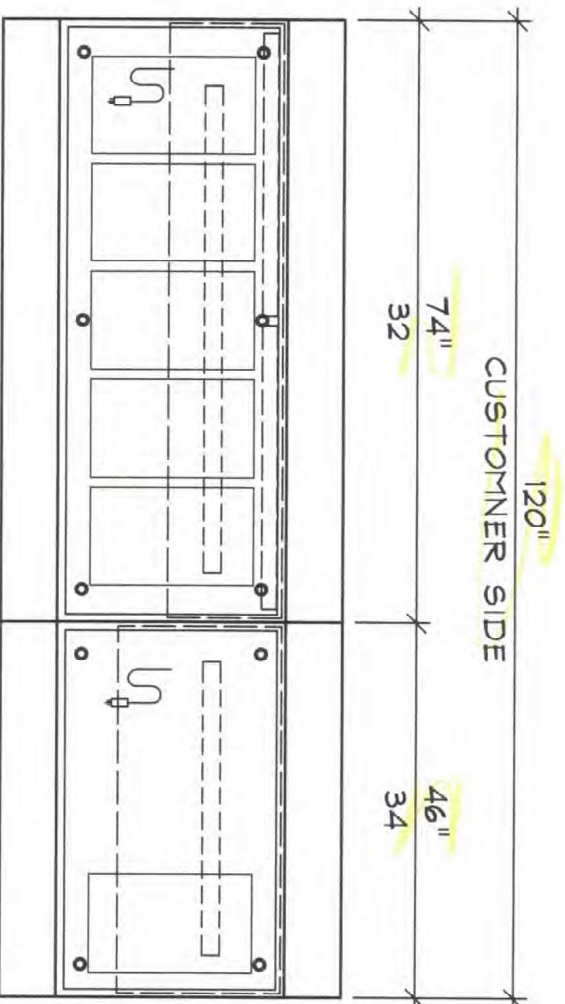
BY TJT

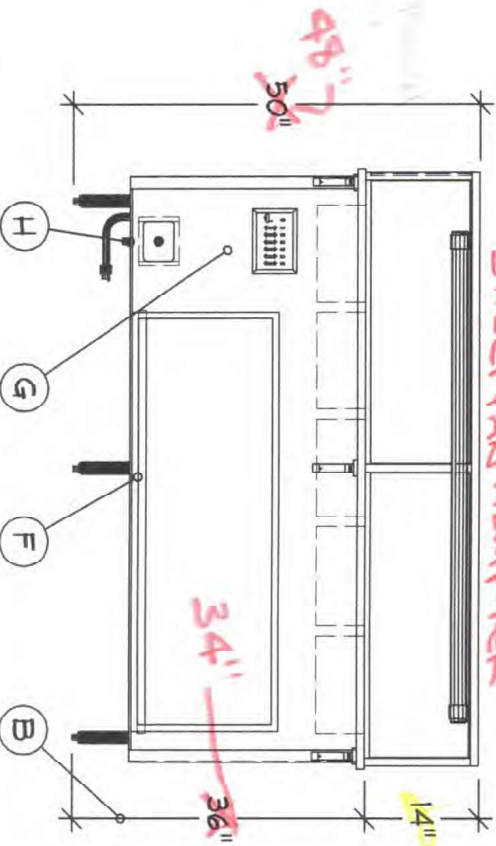
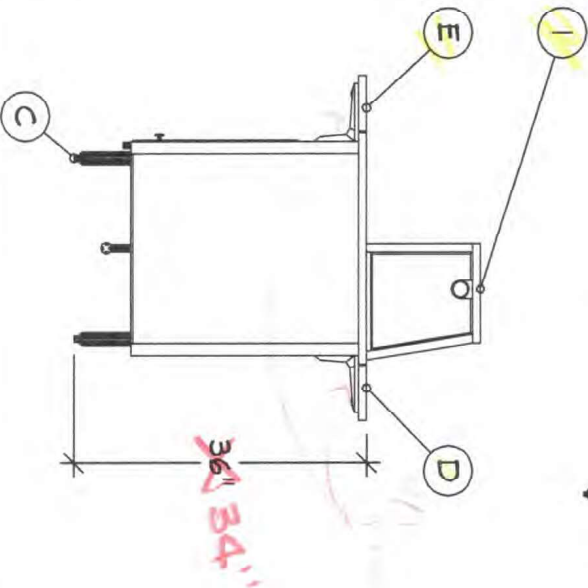
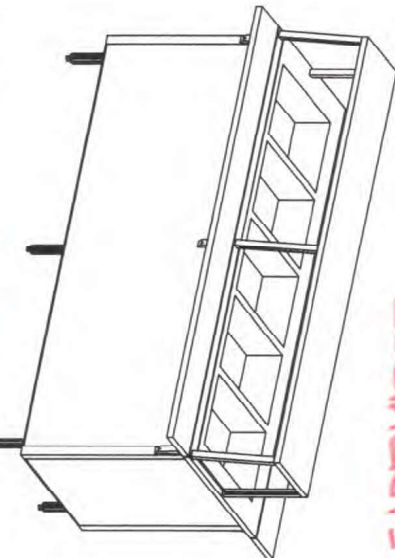
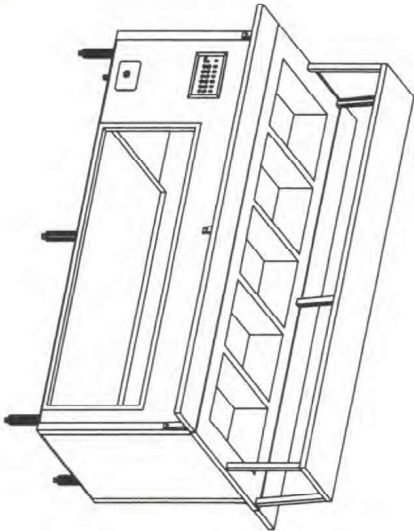
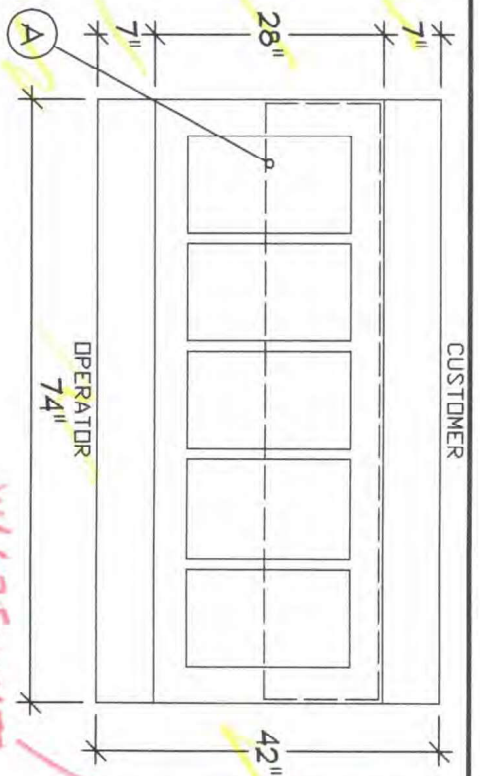
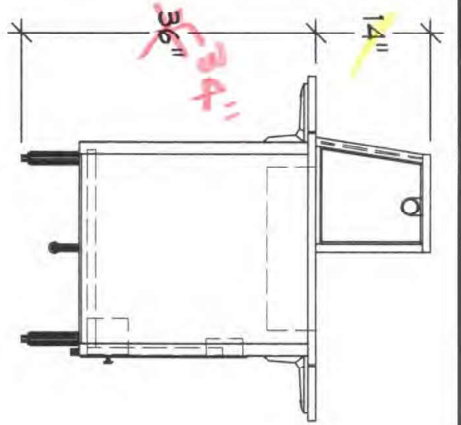
SANTEE/BECKER ASSOCIATES
FOOD FACILITY DESIGN CONSULTANTS

REVIEWED FOR CONFORMANCE TO
DESIGN CONCEPT AND CONTRACT
DOCUMENTS. CONTRACTOR IS
RESPONSIBLE FOR CONFORMANCE
TO PROJECT CONDITIONS AND
DIMENSIONS AND COORDINATION OF
WORK OF ALL PARTIES INVOLVED.
APPROVAL OF THIS SUBMITTAL
SHALL NOT RELIEVE CONTRACTOR
OF RESPONSIBILITY FOR ANY
ERRORS OR OMISSIONS.



#37311





W/ (1) VOLLRATH #19199
SHEET PAN ADAPTER

W/ 625 WATT
ELEMENTS

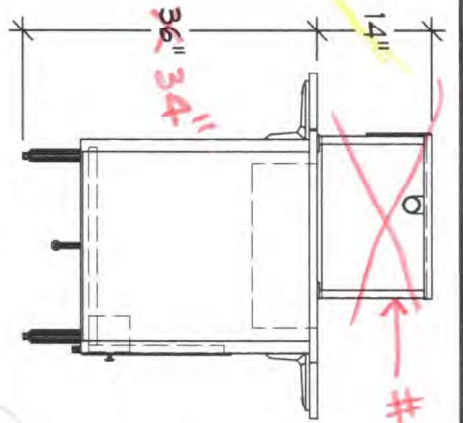
- Server 32 1 Qty 1
- Hot Food Counter
- A 5 Individual Wet Hot Wells
- B Custom Counter Height
- C Legs : 6" Adjustable
(Adds 2" To Height)
- D Customer Side Plate Rest
- E w/Lift-off Bracket
- F Operator Side Plate Rest
- G w/ Lift-off Bracket
- H Storage Shelf w/o Doors
- I Controls : Touch Temp
- J Drain : 1 1/2" w/ Ball
- K Valve Extend Copper Drain
- L Pipe Thru Bottom Of Base
- M Classic Breath Guard
- N Single Side Cafeteria
- O Single Deck
- P Full Width S-S
- Q Fluorescent Lights
- R On Board Switch
- S End Panel Operator Left Side
- T Acrylic Panels
- U *** Does Not Meet Current
- V NSF Standards

Finishes And Materials

- Top : 18 Ga SST
- Body : Laminate TBD
- Trim : Standard SST
- Plate Rest : 18 Ga SST
- Breath Grd : Polished SST

SELECTED BY
ARCHITECT

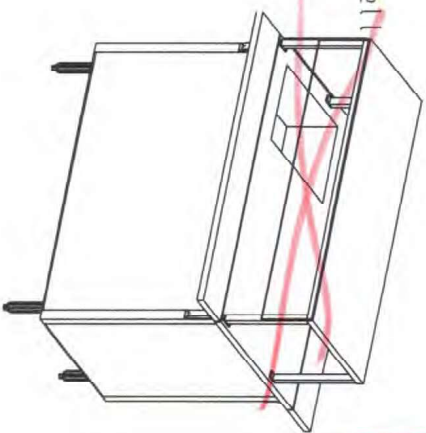
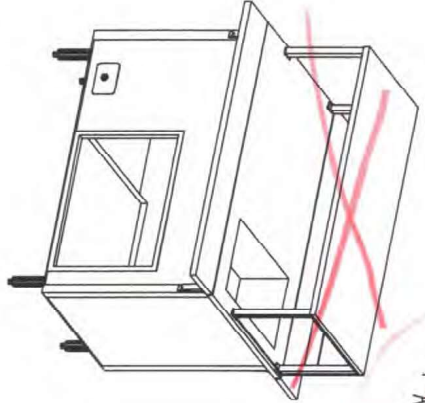
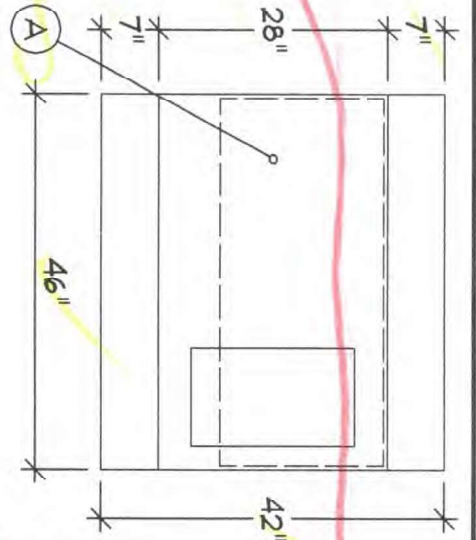
VOLTS	208	1	0	0	ELECTRICAL
Ø	15.1A	Ø	Ø	Ø	NEMA 14-20
PLUMBING	CV: -	HW: -	WASTE: (1) Ø.5"	INDIRECT	DVDS1
DAVIDSON SCHOOL - 1					
THE VOLLRATH CO., LLC					
COPYRIGHT 2021					
SHEBOYGAN, WI					
04-05-21					



#37311 - REVISE.
PROFILE TO MATCH
ADJACENT COUNTER

W/ 18 GA. 3(S) CUSTOM
FAB COVER PER SPEC
COORDINATE DIMS.
CONSTRUCTION
W/ RUSSCO CUSTOM
FAB.

A Top Layout Operator L-R
Open Work Top
(1) 1 Pan Integrated Iced Cold Well

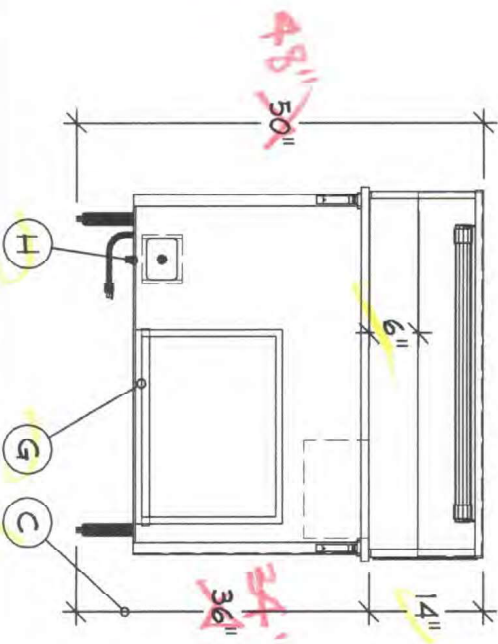
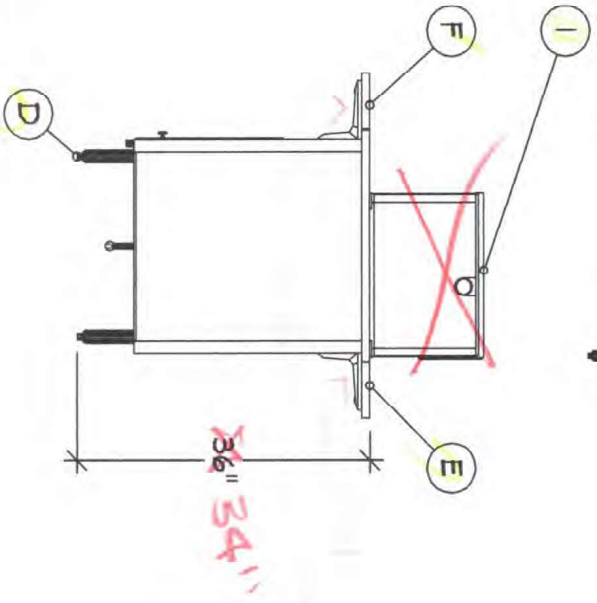


#37311

Finishes And Materials

Top : 18 Ga SST
Body : Laminate T80
Trim : Standard SST
Plate Rest : 18 Ga SST
Breath Grd : Polished SST

SELECTED BY
ARCHITECT



Server 34 1 Qty 1	
Cold Food Counter	
A Custom Configuration	
B (1) 1 Pan Iced Cold Well	
C Custom Counter Height	
D Legs : 6" Adjustable	
(Adds 2" To Height)	
E Customer Side Plate Rest	
F w/Lift-off Bracket	
Operator Side Plate Rest	
G w/ Lift-off Bracket	
Storage Shelf w/o Doors	
H Drain : 1/2" w/ Ball Valve	
I Classic Breath Guard	
Single Side Cafeteria	
NSF Single Deck	
Full Width S-S	
Fluorescent Lights	
On Board Switch	
End Panel Operator Right Side	
6" Front Opening Gap	
Acrylic Panels	
DAVIDSON SCHOOL - I	
VOLLRATH	
THE VOLLRATH CO., LLC	
SHEBOYGAN, WI	
COPYRIGHT 2021	
04-05-21	
INDIRECT	
WASTE: (1) 0.5"	
PLUMBING HW: -	
CV: -	
VOLTS 120	
0.1A	
ELECTRICAL	
NEMA 5-15	
DVD01	

GENERAL NOTES - PLEASE READ

CONFIGURATION: THESE DRAWINGS ARE TO BE USED IN CONJUNCTION WITH THE PREPARED QUOTATION AND MUST BE RECONCILED PRIOR TO RELEASE FOR FABRICATION.

DIMENSIONS: ALL DIMENSIONS SHOWN ARE $\pm 1/4"$

CONNECTIONS: ALL PIPING, FITTINGS, AND INTERCONNECTION SERVICES SHOWN ARE TO BE SUPPLIED AND INSTALLED BY LICENSED CONTRACTORS IN ACCORDANCE WITH ALL LOCAL CODES.

BY OTHERS: VERIFY ALL EQUIPMENT LISTED AS BY OTHERS FOR SIZE AND MECHANICAL SERVICE REQUIREMENTS.

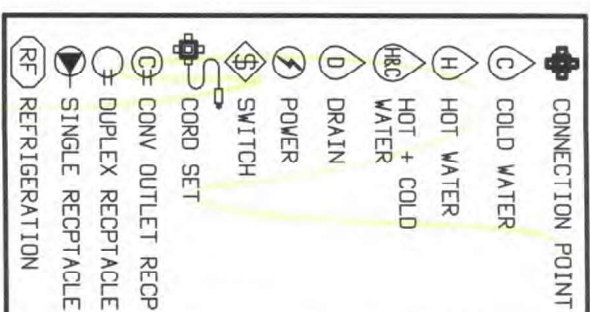
NOTE: IN LINE WITH THE POLICY TO CONTINUALLY IMPROVE ITS PRODUCTS, THE MANUFACTURE RESERVES THE RIGHT TO CHANGE MATERIALS AND SPECIFICATIONS WITHOUT NOTICE.



CONFIDENTIAL DESIGN

The Vollrath Company, L.L.C. ('Vollrath') considers this new design proprietary and confidential. Due to the existing relationship of trust and good faith between Vollrath and Recipient, Vollrath is providing this proprietary and confidential design and related information to Recipient with the understanding that Recipient will maintain such design and information in secrecy and will not directly or indirectly use, disseminate, or otherwise disclose this proprietary and confidential information to any outside person or organization without the express written prior consent of The Vollrath Company, L.L.C.

04-01-2021 : 04:58:31a
 04-01-2021 : 10:00:34a
 04-01-2021 : 12:35:04p
 04-01-2021 : 12:37:45p
 04-05-2021 : 04:41:54a



DVDS1

DAVIDSON SCHOOL - 1

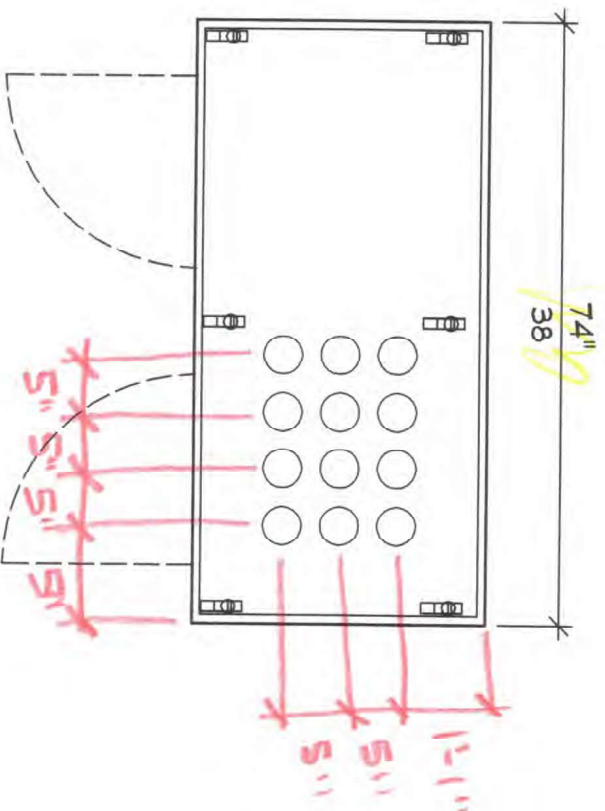


THE VOLLRATH CO., LLC

04-05-21

COPYRIGHT 2021
 SHEBOYGAN, WI





GENERAL NOTES - PLEASE READ

CONFIGURATION:

THESE DRAWINGS ARE TO BE USED IN CONJUNCTION WITH THE PREPARED QUOTATION AND MUST BE RECONCILED PRIOR TO RELEASE FOR FABRICATION.

DIMENSIONS:

ALL DIMENSIONS SHOWN ARE $\pm 1/4"$

CONNECTIONS:

ALL PIPING, FITTINGS, AND INTERCONNECTION SERVICES SHOWN ARE TO BE SUPPLIED AND INSTALLED BY LICENSED CONTRACTORS IN ACCORDANCE WITH ALL LOCAL CODES.

BY OTHERS:

VERIFY ALL EQUIPMENT LISTED AS BY OTHERS FOR SIZE AND MECHANICAL SERVICE REQUIREMENTS.

NOTE:

IN LINE WITH THE POLICY TO CONTINUALLY IMPROVE ITS PRODUCTS, THE MANUFACTURE RESERVES THE RIGHT TO CHANGE MATERIALS AND SPECIFICATIONS WITHOUT NOTICE.



CONFIDENTIAL DESIGN

The Vollrath Company, L.L.C. ('Vollrath') considers this new design proprietary and confidential. Due to the existing relationship of trust and good faith between Vollrath and Recipient, Vollrath is providing this proprietary and confidential design and related information to Recipient with the understanding that Recipient will maintain such design and information in secrecy and will not directly or indirectly use, disseminate, or otherwise disclose this proprietary and confidential information to any outside person or organization without the express written prior consent of The Vollrath Company, L.L.C.

04-01-2021

04-01-2021 : 03:43:36p

04-01-2021 : 03:44:14p



CONNECTION POINT



COLD WATER



HOT WATER



HOT + COLD WATER



DRAIN



POWER



SWITCH



CORD SET



CONV OUTLET RECP



DUPLEX RECEPTACLE



SINGLE RECEPTACLE



REFRIGERATION

DAVIDSON SCHOOL - 3

DVDS3

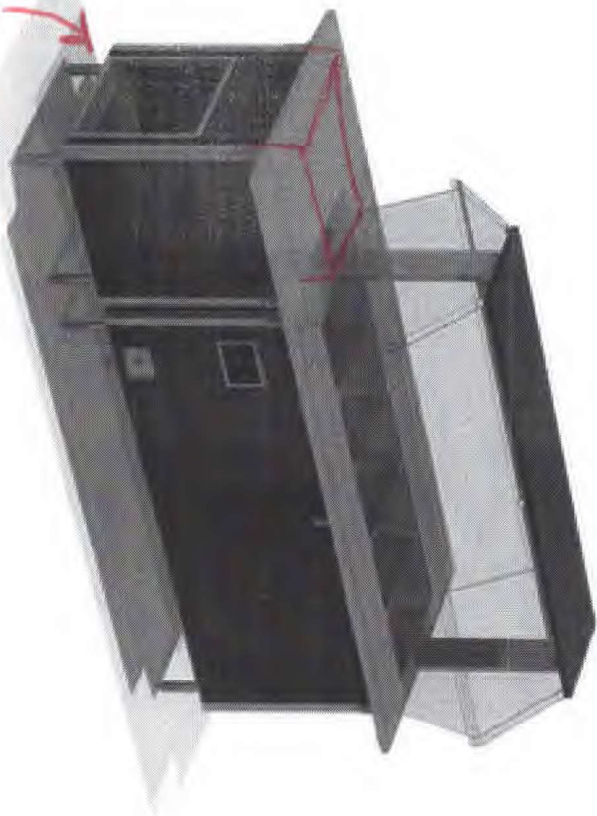


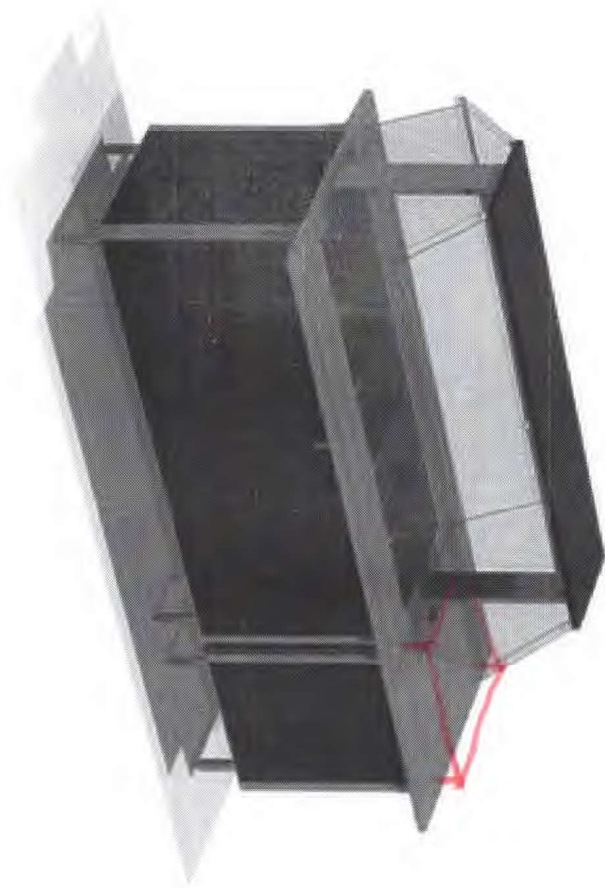
04-01-21

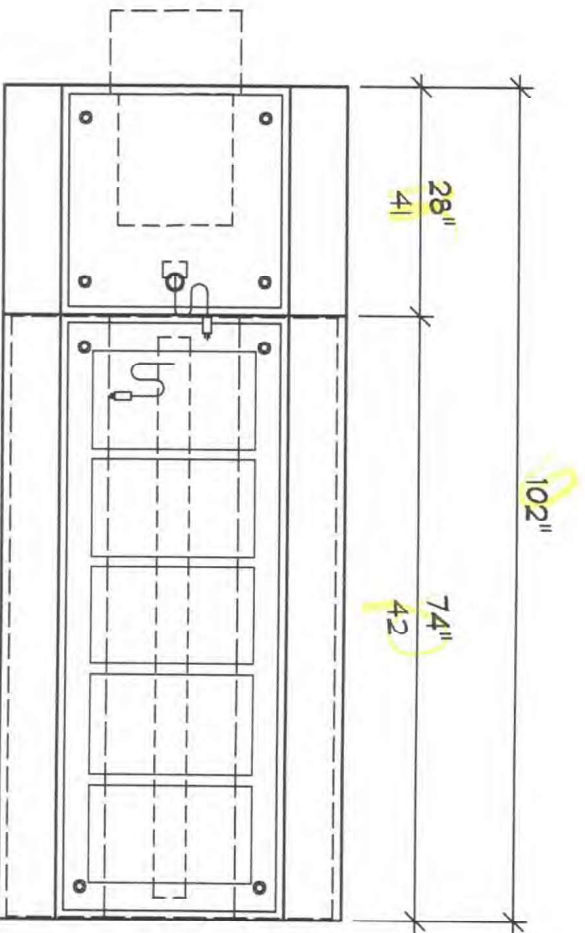
THE VOLLRATH CO., LLC

COPYRIGHT 2021
SHEBOYGAN, WI

CASHIER COUNTER
34" HIGH w/ PLATE
SHELVES MOUNTED
30" HIGH







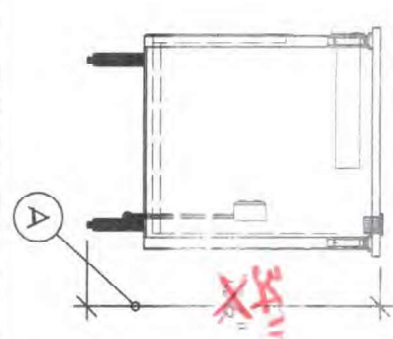
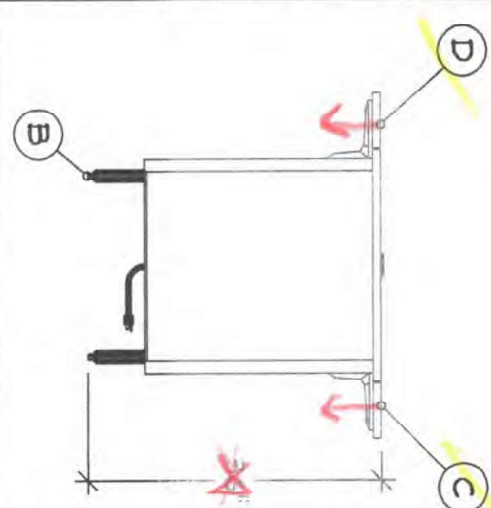
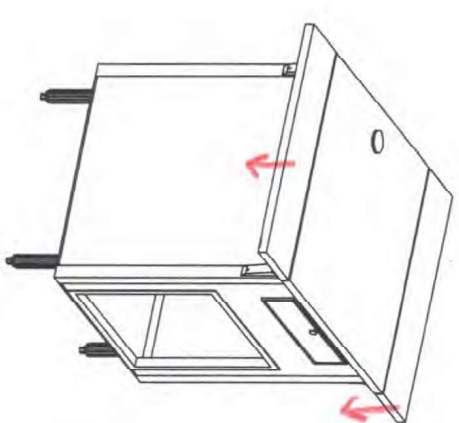
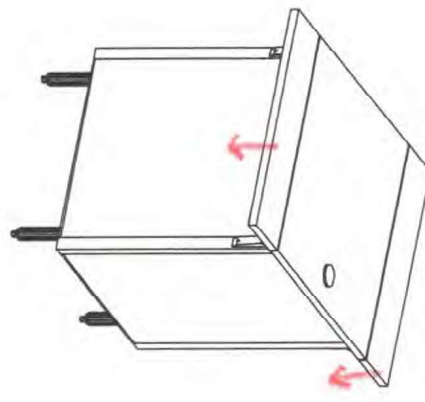
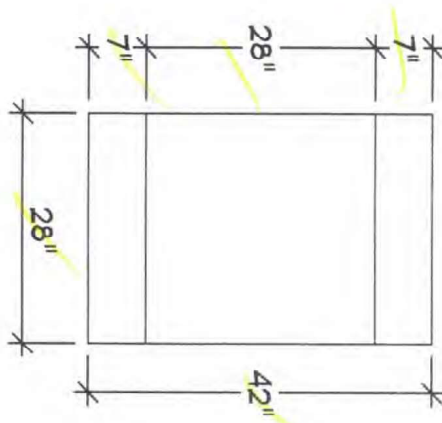
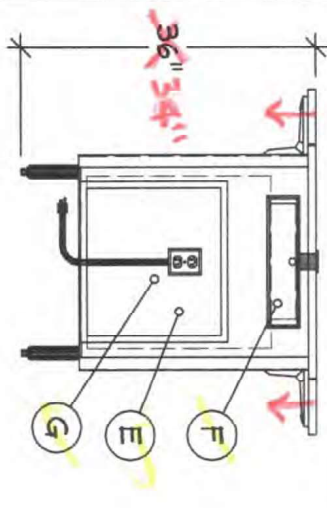
DVDS2

DAVIDSON SCHOOL - 2



THE VOLLRATH CO., LLC

04-01-21
COPYRIGHT 2021
SHEBOYGAN, WI



OUT 34" HIGH
W/ PLATE RESTS
MOUNTED AT 30"
HIGH TO ALIGN W/
PLATE RESTS ON
ADJACENT COUNTER -
REVISE

- Server 41 Qty 1
- Utility Counter
 - A Custom Counter Height
 - B Legs : 6" Adjustable
(Add 2" To Height)
 - C Customer Side Plate Rest
 - D w/Lift-off Bracket
 - E Operator Side Plate Rest
 - F w/ Lift-off Bracket
 - G End Oriented Cashier
 - Opening
 - F Cash Drawer
 - G Receptacle And Cord
 - Grommet

Finishes And Materials

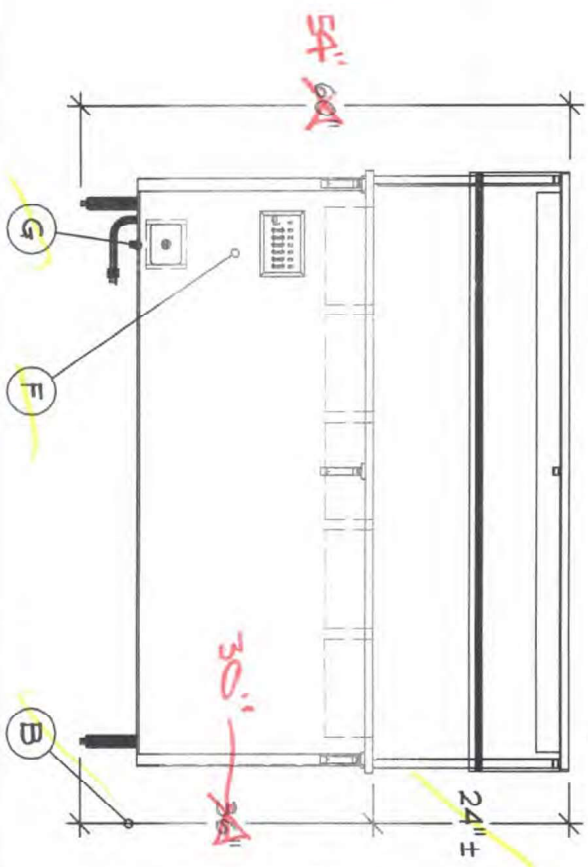
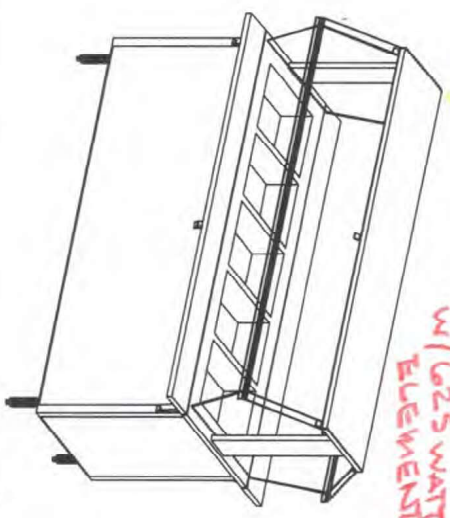
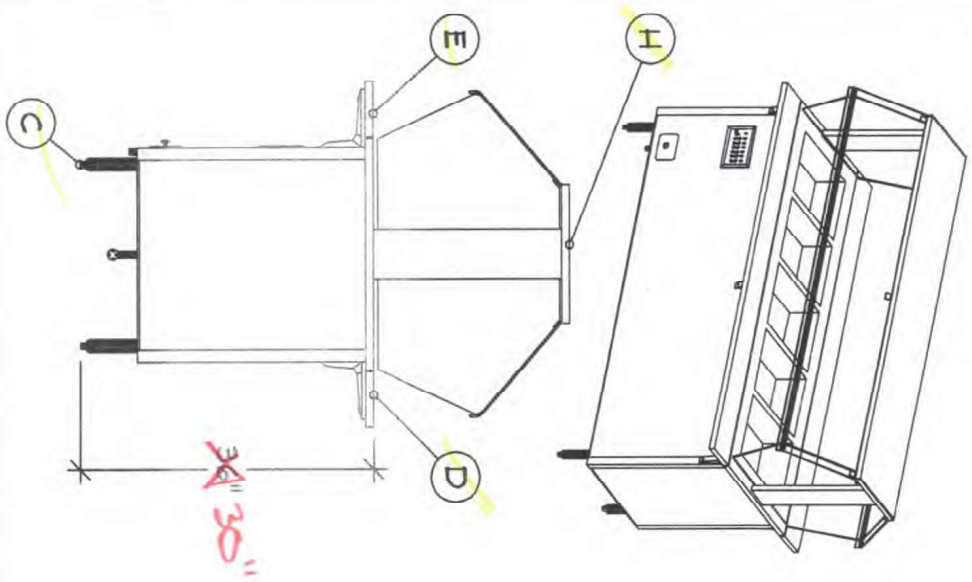
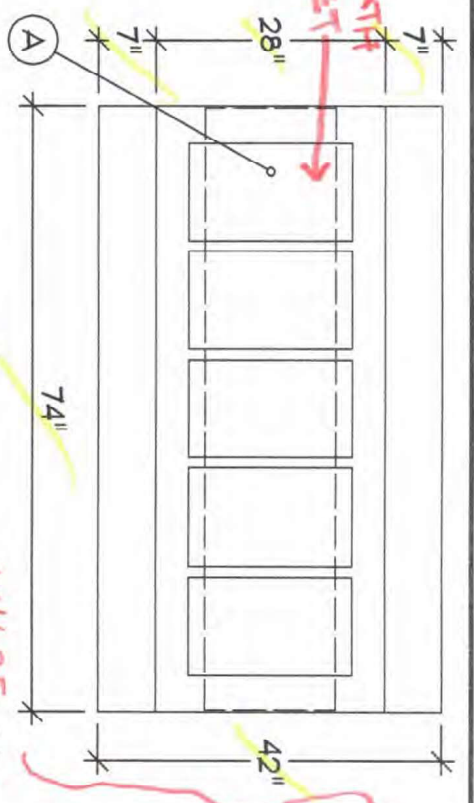
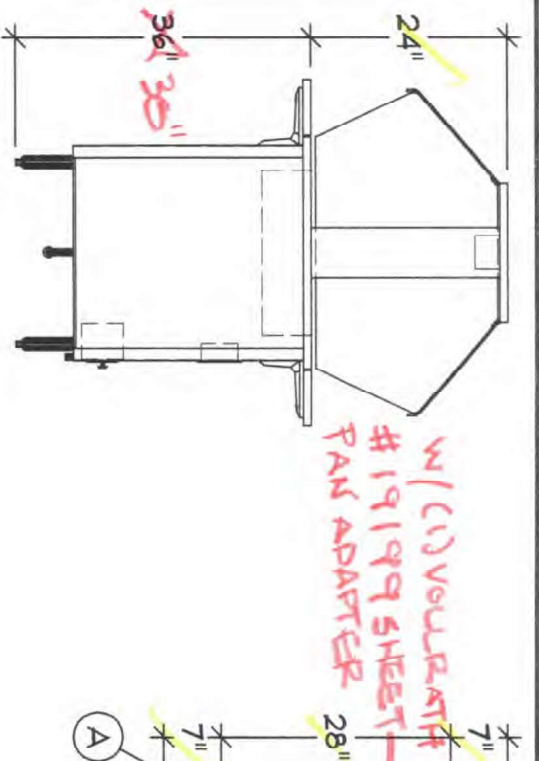
- Top : 16 Ga SST
- Body : Laminate TBD
- Trim : Standard SST
- Plate Rest : 18 Ga SST

SELECTED BY
ARCHITECT

VOLTS	120	60	ELECTRICAL
Ø	1	1/2	
10.0 Max A			NEMA 5-15

DAVIDSON SCHOOL - 2

DVDS2



- Server 42 1 Qty 1
- Hot Food Counter
 - A 5 Individual Wet Hot Wells
 - B Custom Counter Height
 - C Legs : 6" Adjustable (Adds 2" To Height)
 - D Customer Side Plate Rest w/Lift-off Bracket
 - E Operator Side Plate Rest w/ Lift-off Bracket
 - F Controls : Touch Temp
 - G Drain : 1/2" Drain With Ball Valve, Extend Copper Drain Pipe Thru Bottom Of Base
 - H Access Breath Guard
 - NSF Double Side Buffet With Adjustable Height Frame Full Width S-S
 - Fluorescent Lights
 - On Board Switch
 - End Panels Both Sides
 - w/ FLIP-UP BREATH GUARDS

Finishes And Materials

- Top : 16 Ga SST
- Body : Laminate TBD
- Trim : Standard SST
- Plate Rest : 18 Ga SST
- Breath Grd : SST Frame, Top Shelf To Match Body
- SELECTED BY ARCHITECT

VOLTS	208	Ø	1	15.3A	Ø _c	1	ELECTRICAL
PLUMBING	HW: -	WASTE: (1) Ø.5"	INDIRECT				
DAVIDSON SCHOOL - 2							
THE VOLURATH CO., LLC							
04-01-21							
COPYRIGHT 2021							
SHEBOYGAN, WI							

GENERAL NOTES - PLEASE READ

CONFIGURATION:
THESE DRAWINGS ARE TO BE USED IN CONJUNCTION WITH THE PREPARED QUOTATION
AND MUST BE RECONCILED PRIOR TO RELEASE FOR FABRICATION.

DIMENSIONS:
ALL DIMENSIONS SHOWN ARE $\pm 1/4"$

CONNECTIONS:
ALL PIPING, FITTINGS, AND INTERCONNECTION SERVICES SHOWN ARE TO BE SUPPLIED
AND INSTALLED BY LICENSED CONTRACTORS IN ACCORDANCE WITH ALL LOCAL CODES.

BY OTHERS:
VERIFY ALL EQUIPMENT LISTED AS BY OTHERS FOR SIZE AND MECHANICAL SERVICE
REQUIREMENTS.

NOTE:
IN LINE WITH THE POLICY TO CONTINUALLY IMPROVE ITS PRODUCTS, THE MANUFACTURE
RESERVES THE RIGHT TO CHANGE MATERIALS AND SPECIFICATIONS WITHOUT NOTICE.



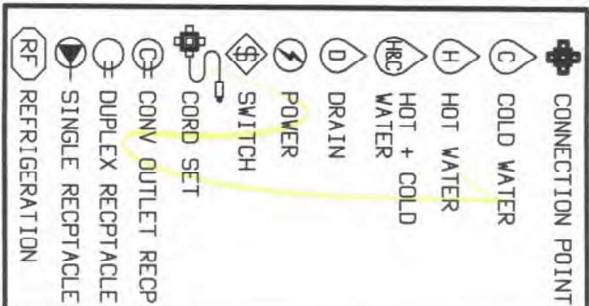
CONFIDENTIAL DESIGN

The Vollrath Company, L.L.C. ('Vollrath') considers this new design proprietary and confidential. Due to the existing relationship of trust and good faith between Vollrath and Recipient, Vollrath is providing this proprietary and confidential design and related information to Recipient with the understanding that Recipient will maintain such design and information in secrecy and will not directly or indirectly use, disseminate, or otherwise disclose this proprietary and confidential information to any outside person or organization without the express written prior consent of The Vollrath Company, L.L.C.

04-01-2021

04-01-2021 : 02:47:41p

04-01-2021 : 02:48:21p



DAVIDSON SCHOOL - 2

DVD52



THE VOLLRATH CO., LLC

04-01-21
COPYRIGHT 2021
SHEBOYGAN, WI